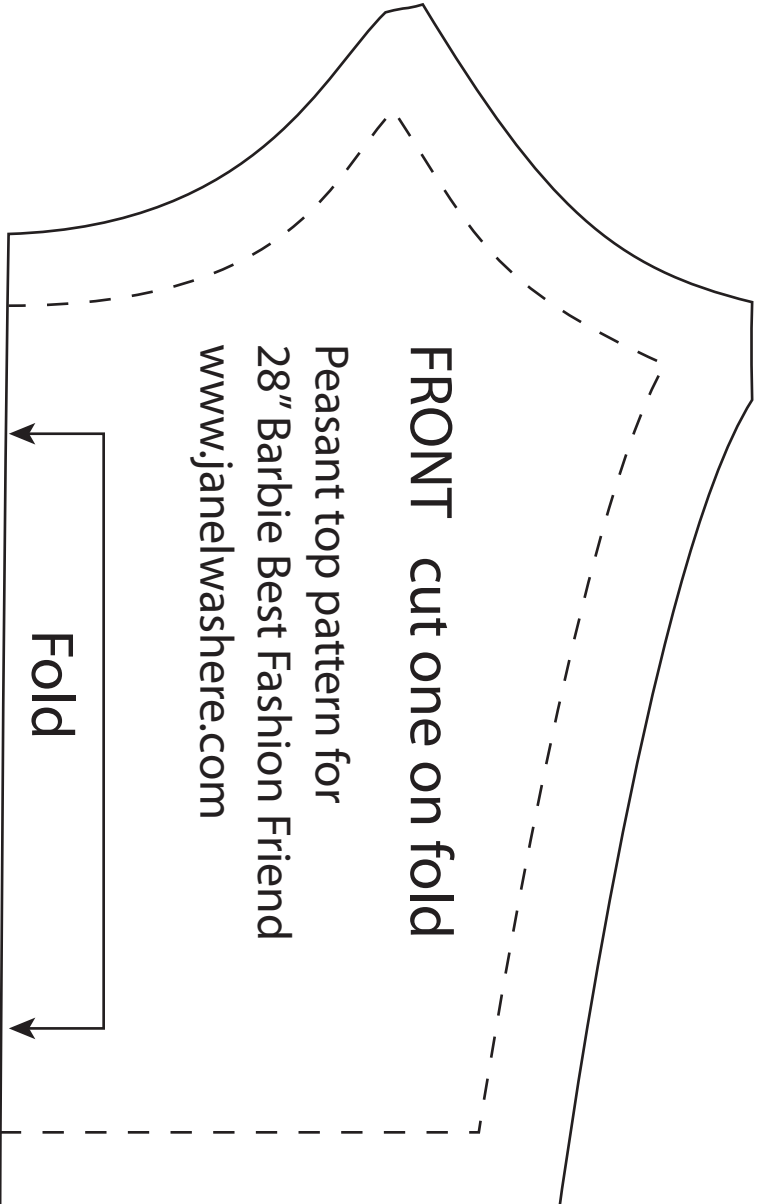


to confirm scale, this line should print 4 inches long





FRONT cut one on fold

Peasant top pattern for
28" Barbie Best Fashion Friend
www.janelwashere.com

Fold

BACK cut two

Stitch fronts and backs to sleeves

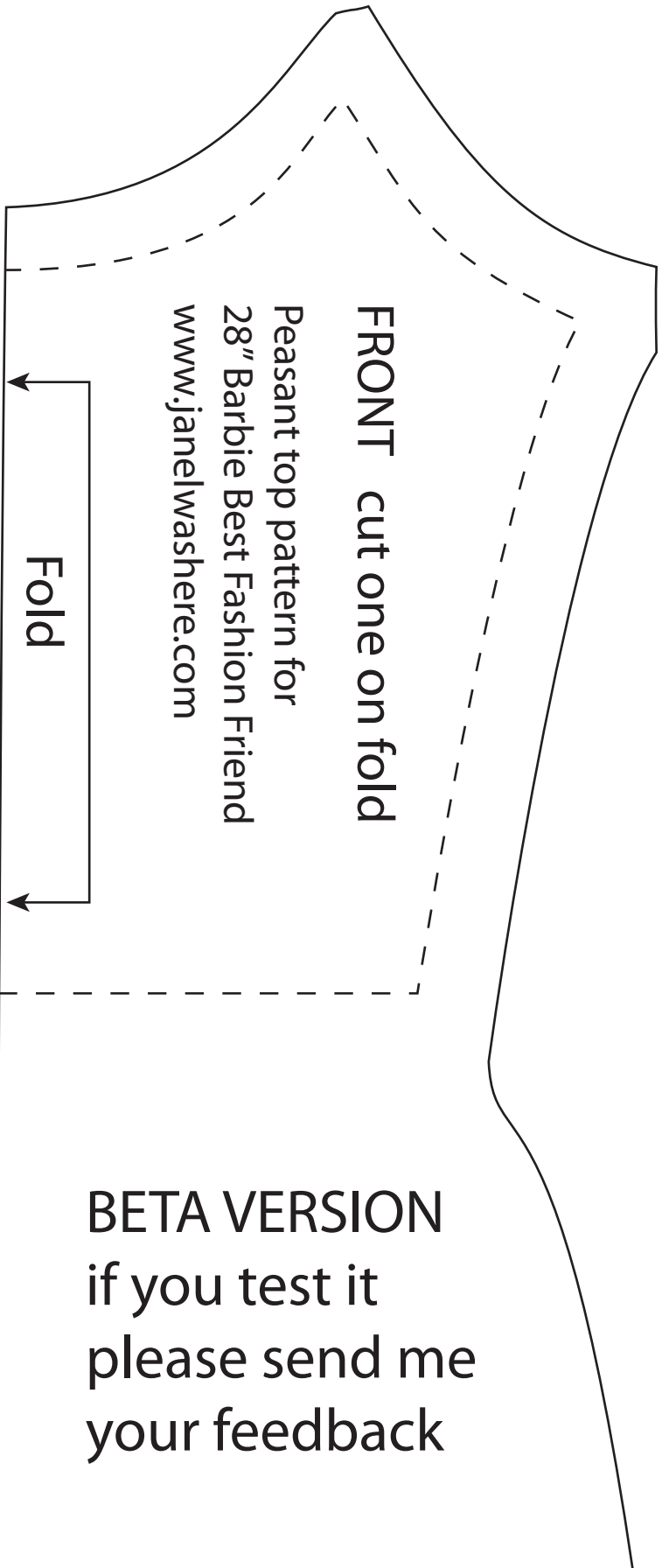
Hem sleeves, gather to 4-1/4"

Stitch up side seams and down sleeves

Fold up lower hem and back edges twice, stitch around

Add snaps or velcro

Edge and gather neckline to 11"

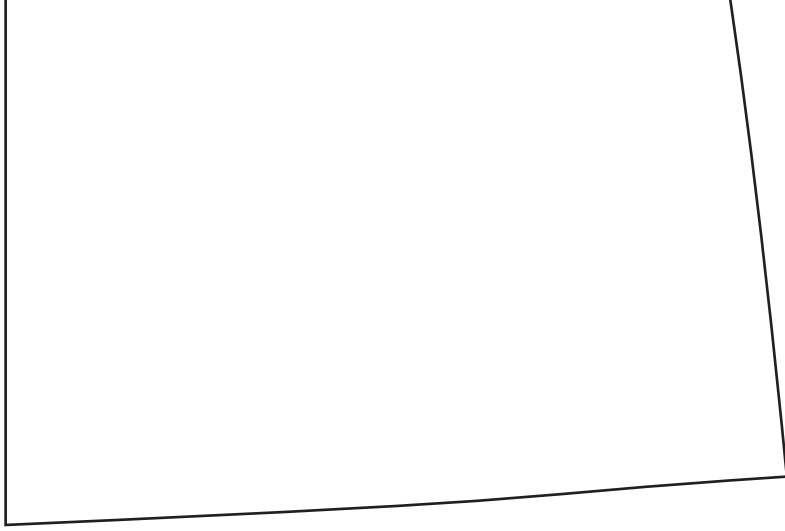


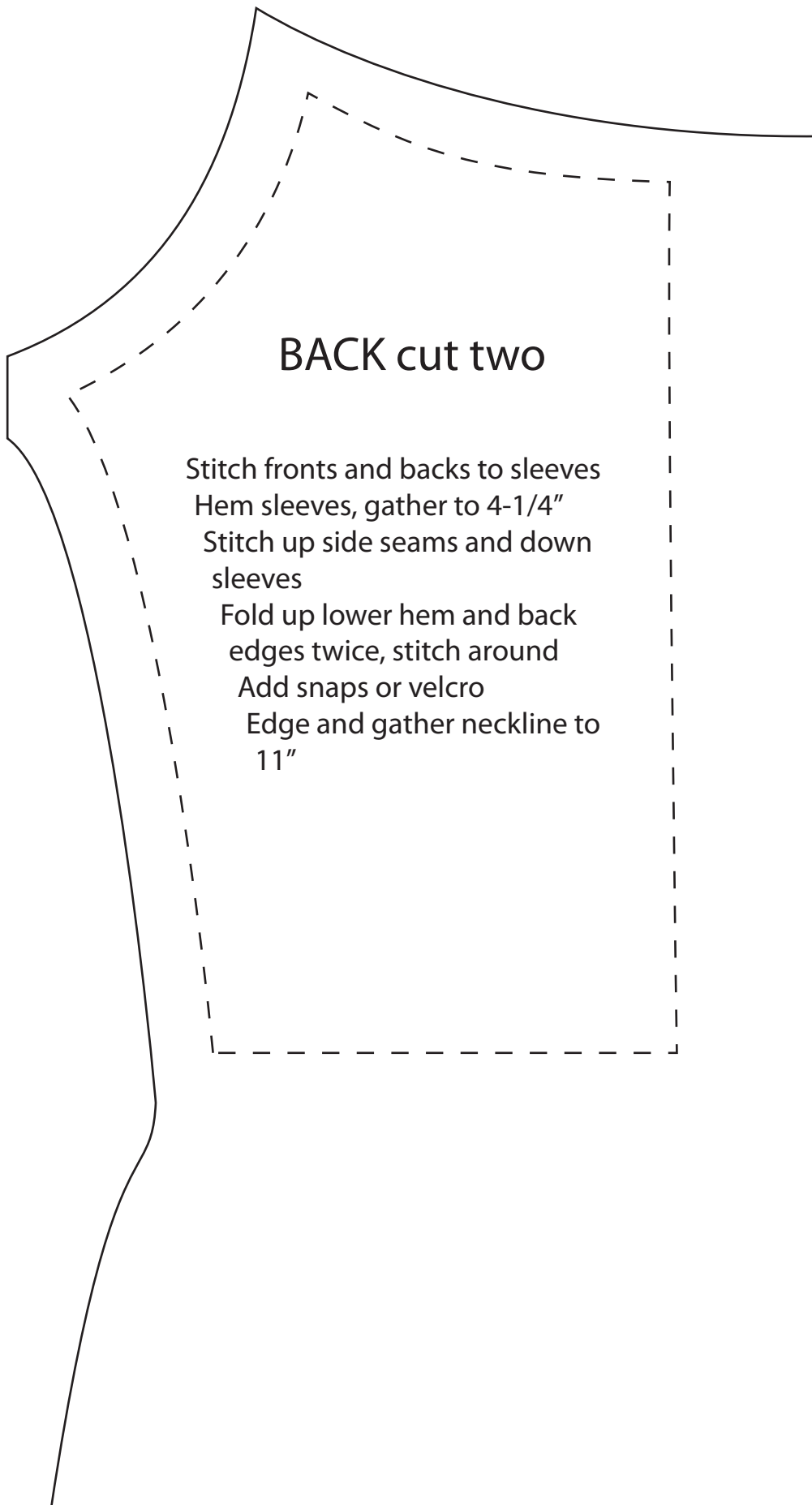
FRONT cut one on fold

Peasant top pattern for
28" Barbie Best Fashion Friend
www.janelwashere.com

Fold

BETA VERSION
if you test it
please send me
your feedback





BACK cut two

Stitch fronts and backs to sleeves

Hem sleeves, gather to 4-1/4"

Stitch up side seams and down sleeves

Fold up lower hem and back edges twice, stitch around

Add snaps or velcro

Edge and gather neckline to 11"

