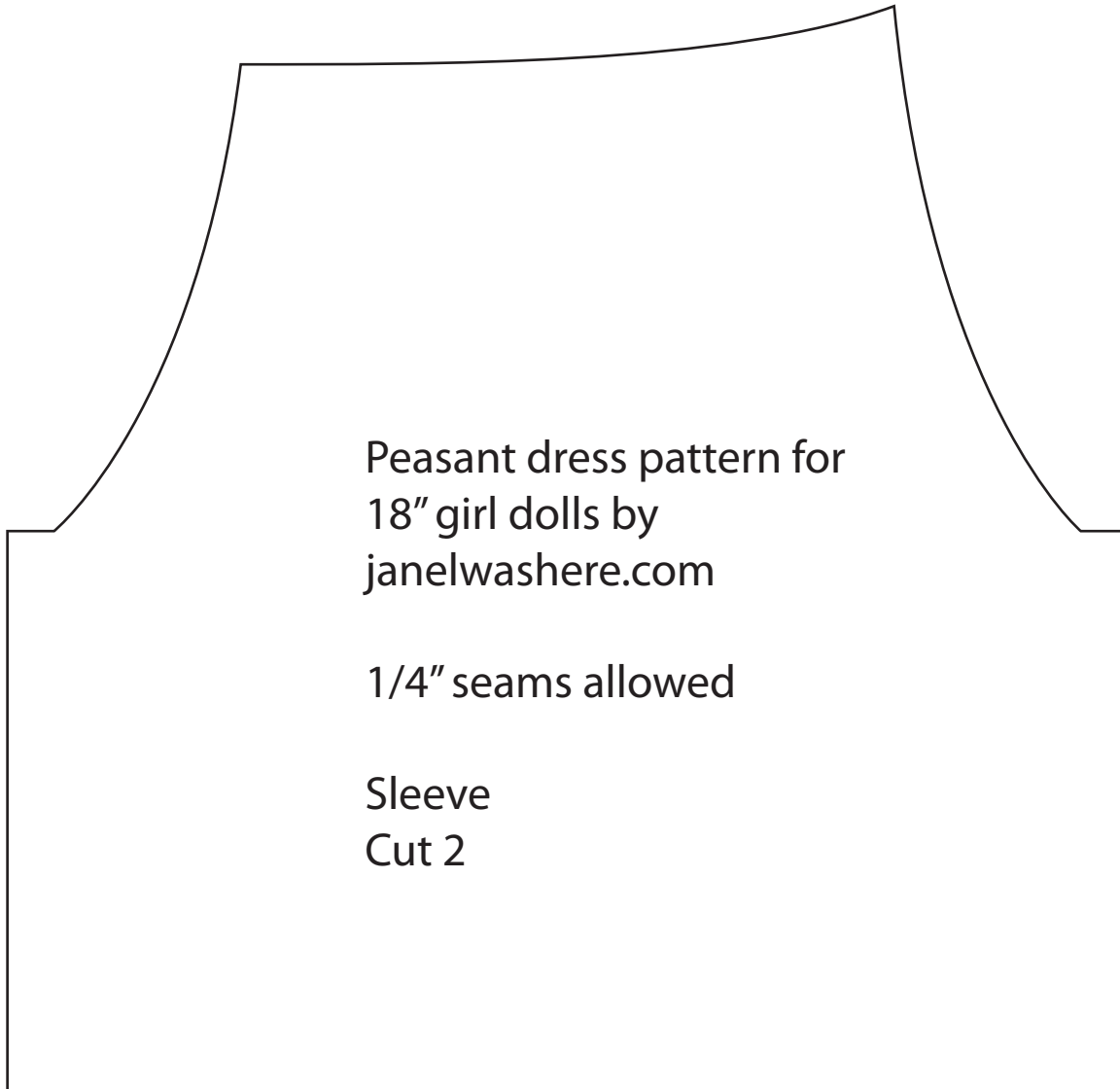
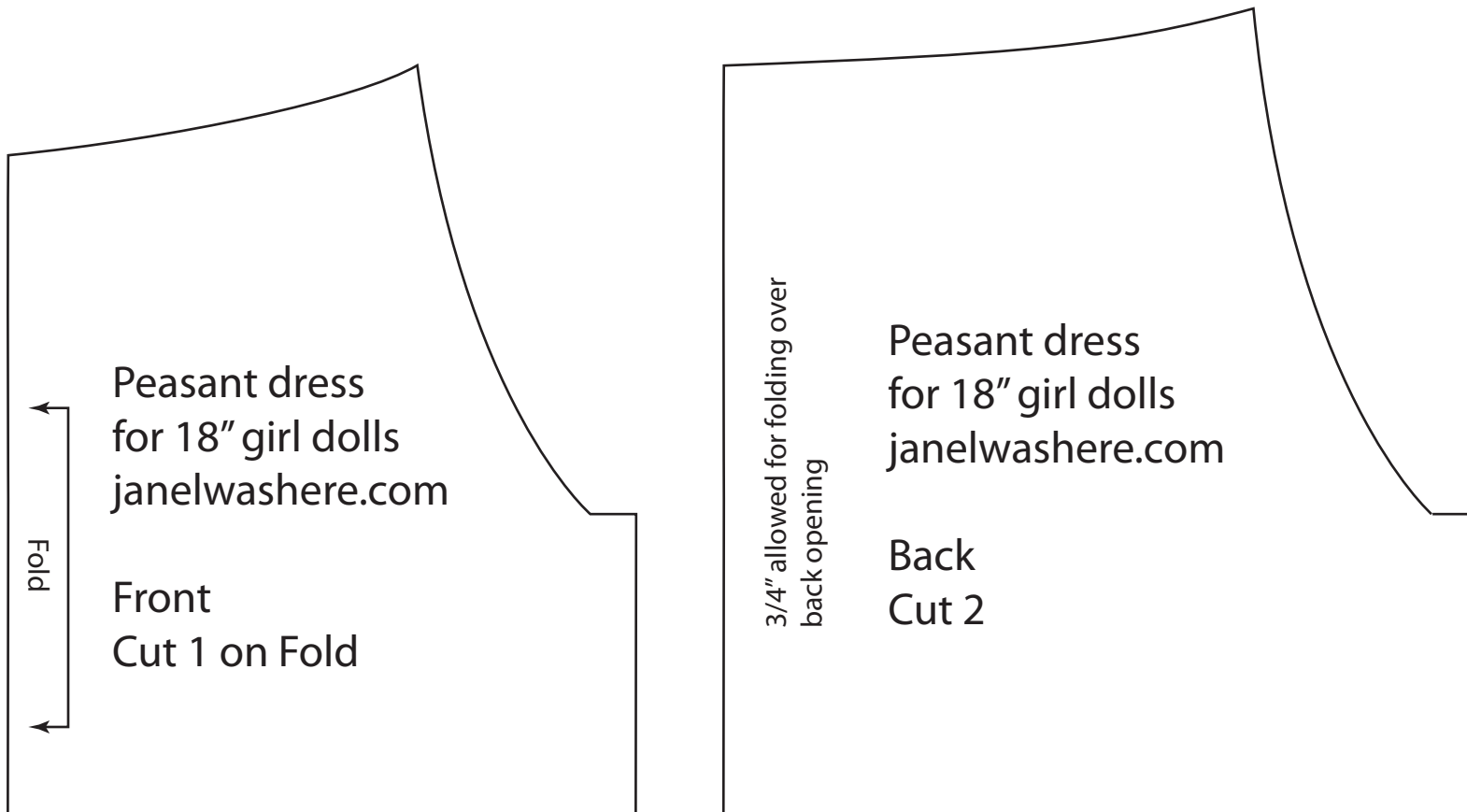

To confirm printing size, this line should be four inches long.
Be sure it prints at 100% rather than "fit to page".



Gather end of sleeve to 4.5"
Gather neckline to 10"

Use a gathered rectangle or tiers for the skirt



This is a good length for a dress.
If you want to make a peasant top, cut the bodice
pieces about two inches longer than this.