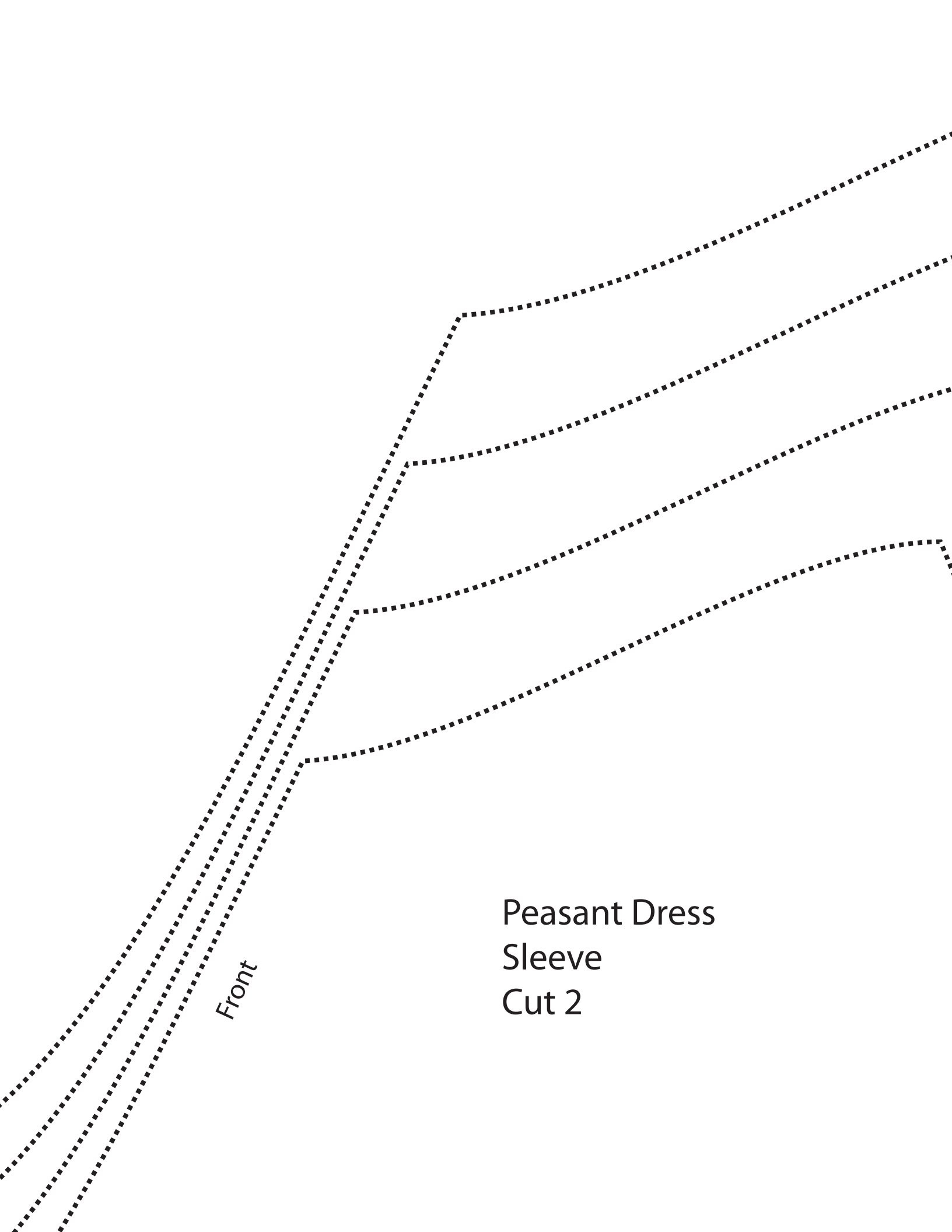


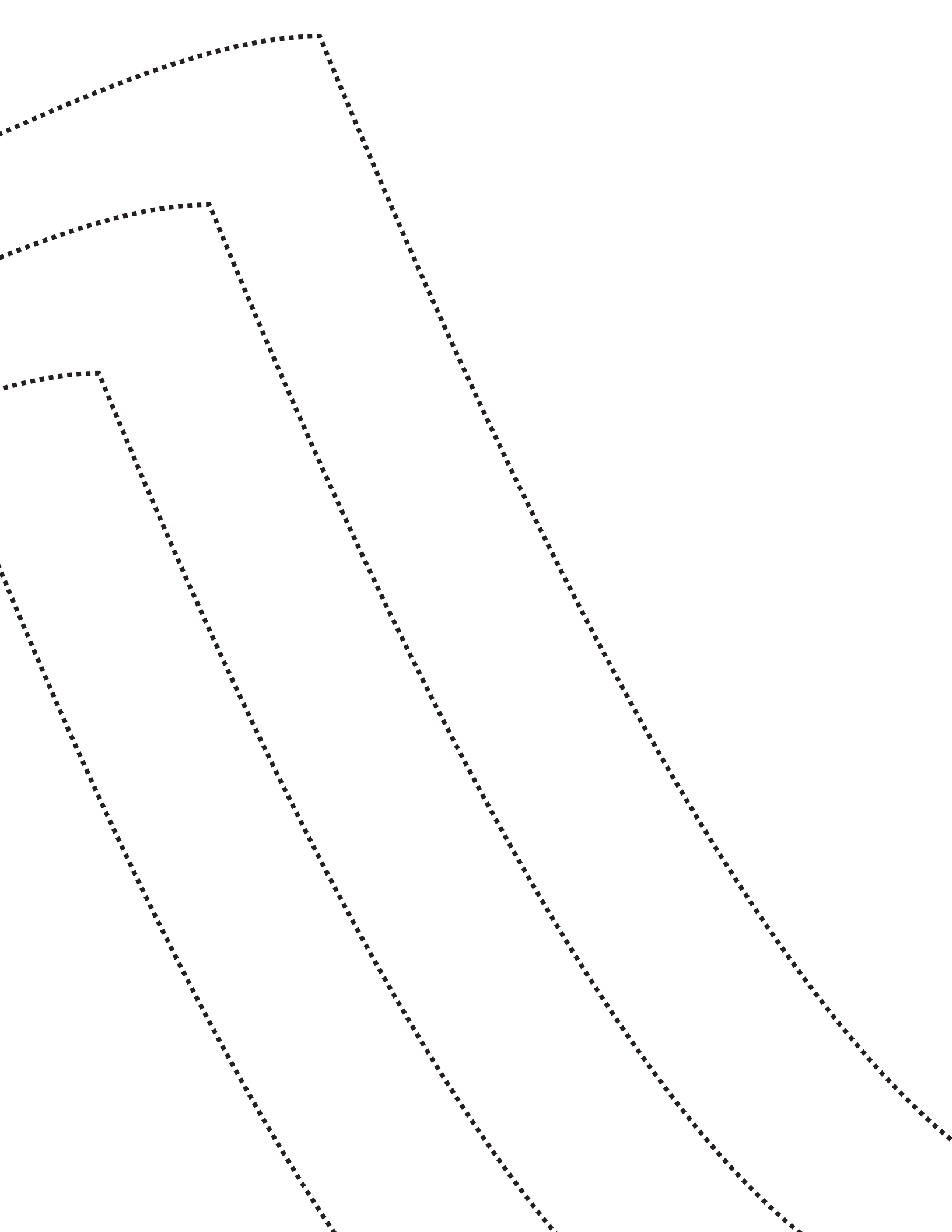
Large

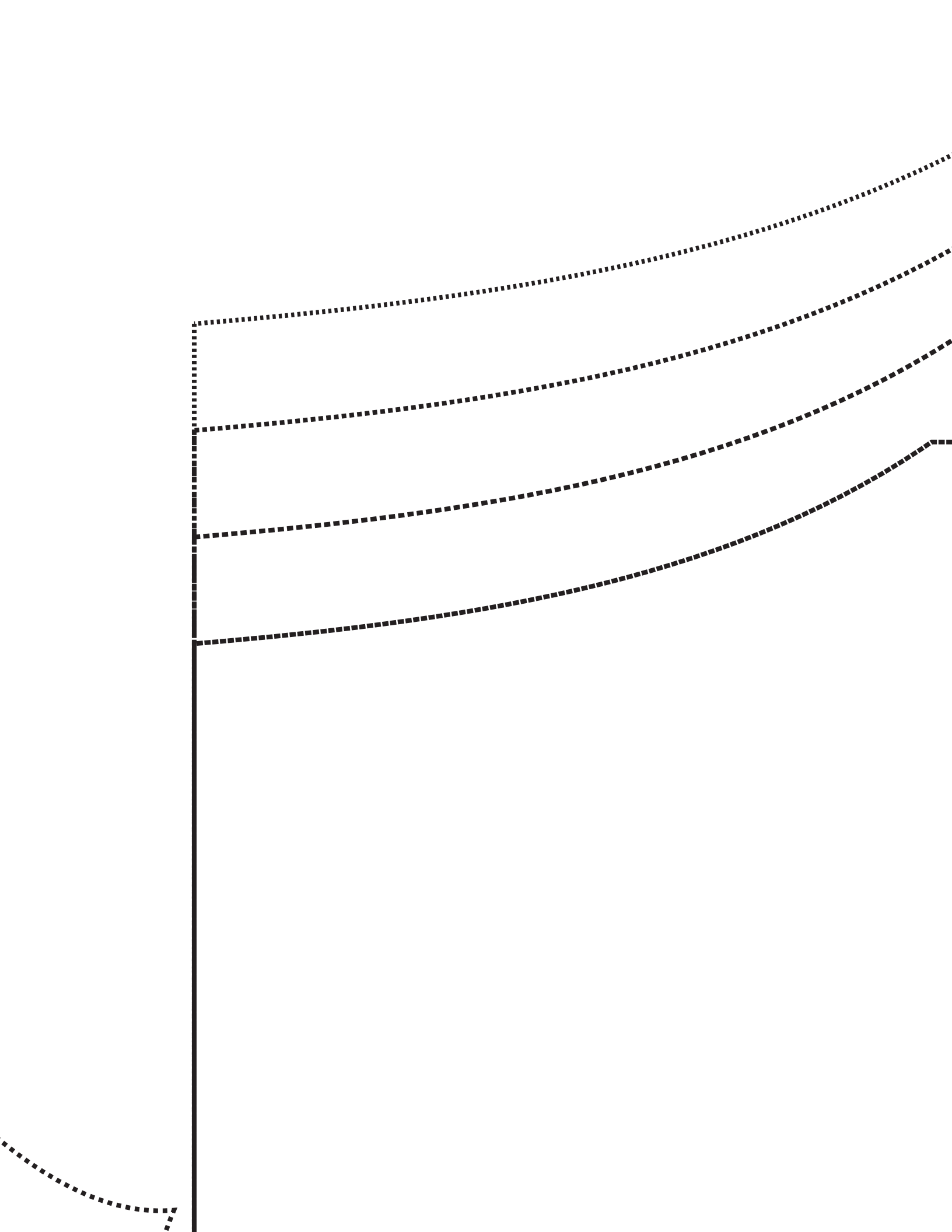
X-Large

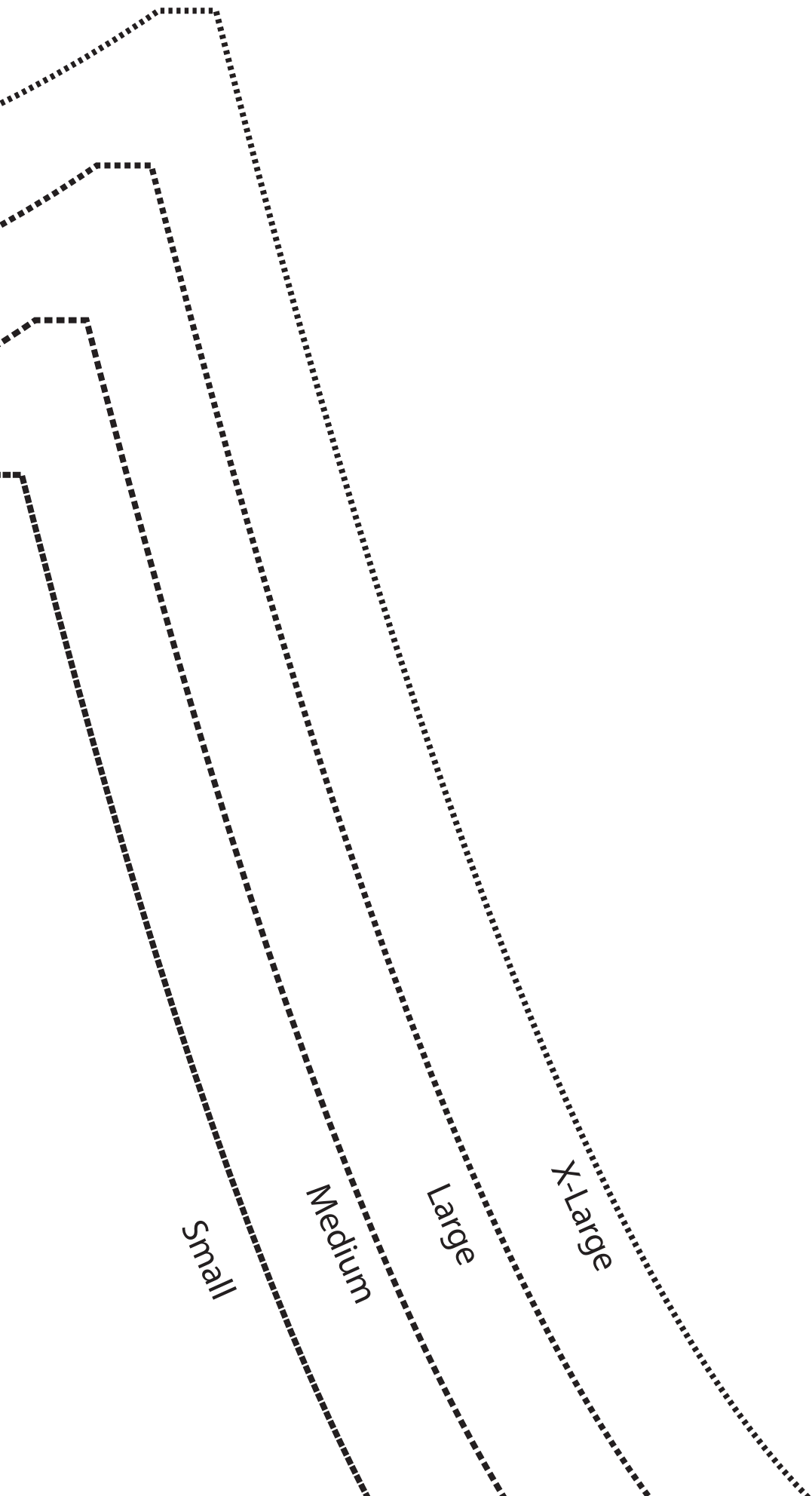


Front

Peasant Dress
Sleeve
Cut 2







Small

Medium

Large

X-Large

Peasant Dress
Top Front
Cut 1 on fold

from www.janelwashere.com
free for personal use



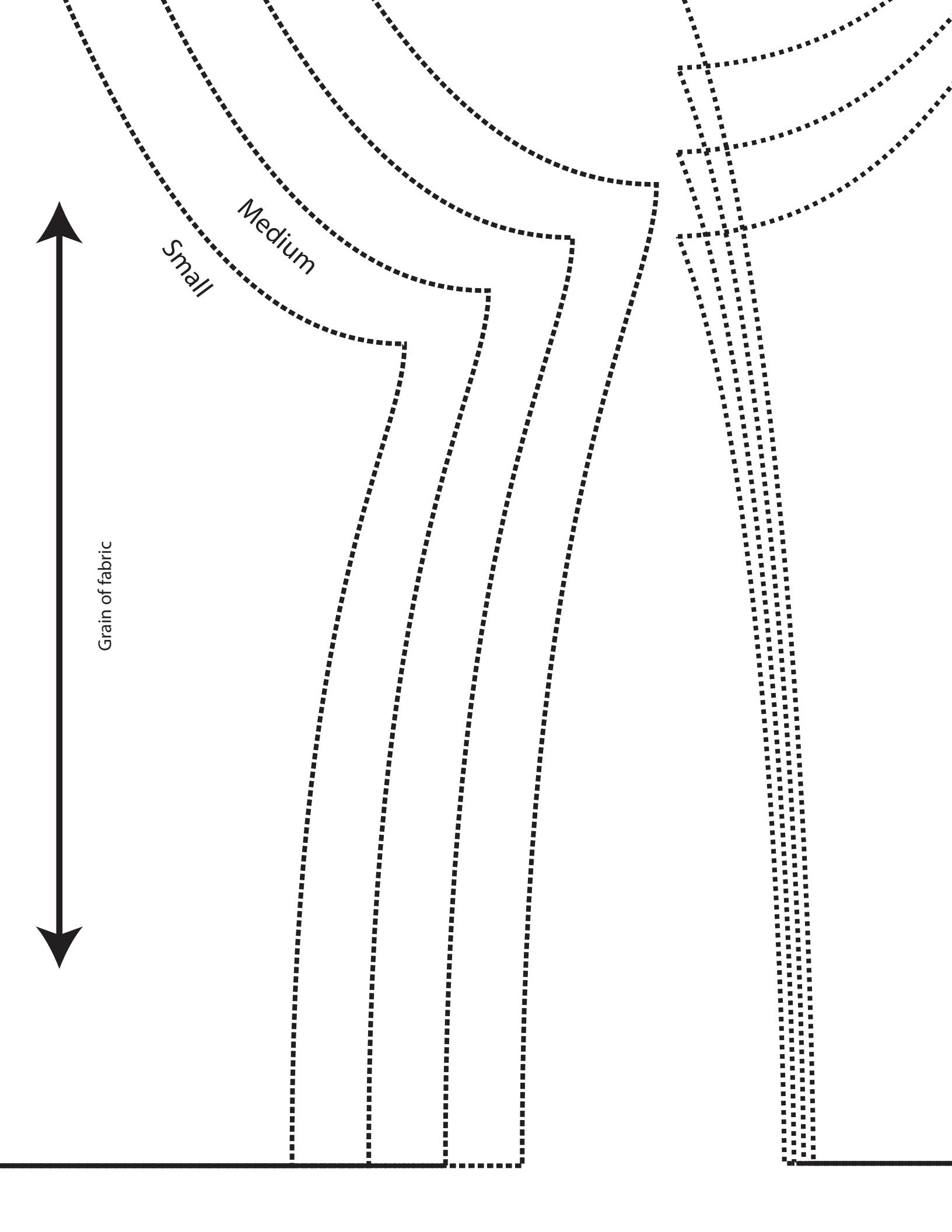
FOLD



Grain of fabric

Small

Medium



This line should print 4" long

Peasant Dress pattern
from janelwashere.com

Half-inch seams allowed throughout

Ruffle piece in the photo is cut 12" by 44" for size medium
Cut four of ruffle pieces

Instructions from memory, if you spot a mistake please let me know :-)

Sew sleeves to the front and back pieces

Use strip of bias tape for a neckline casing for elastic

Sew two skirt pieces together to form a skirt back and cut one skirt piece on the fold for the front, adding in triangles to fill in the corners (because it's wider than 45" fabric folded in half).

Sew skirt front to bodice front and skirt back to bodice back.

I like to wait with the side seams until last so the ruffle gathering is in two flat parts.

Either make the top overhang by an inch or so in order to fold over as a casing for the waist elastic, or use a separate strip of fabric to form the casing. But not yet.

Sew two ruffle pieces together, gather and sew to skirt front, and repeat for skirt back.

Make the sleeve elastic casing and stitch the center of it, but leave a couple inches unsewn at both ends. (This is different but just the way I like doing it :-)

Sew down the entire side starting at the sleeve, under the arms, down the bodice and skirt to the bottom of the ruffle. Both sides of course.

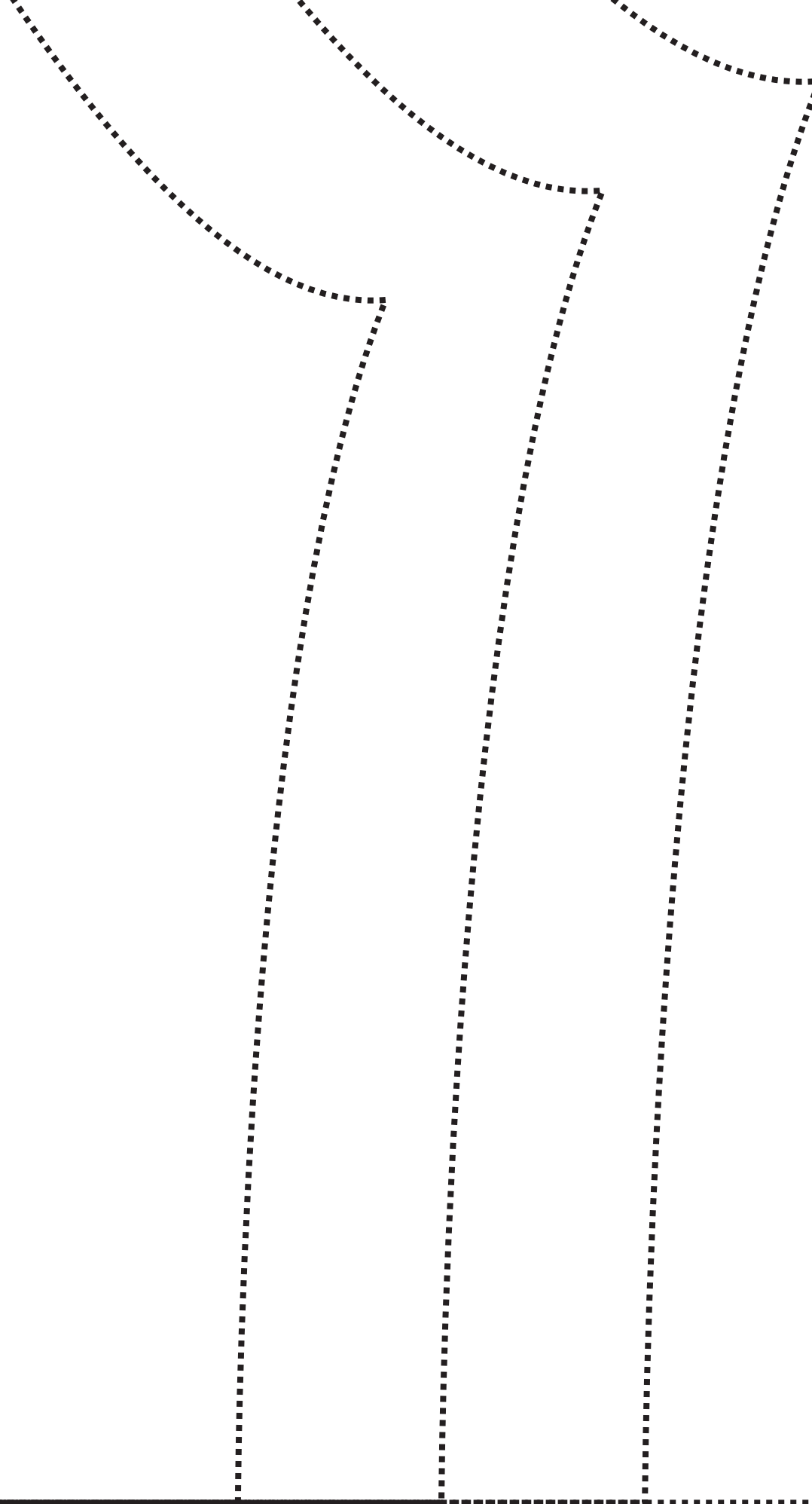
Put in elastic and stitch up the sleeve casing.

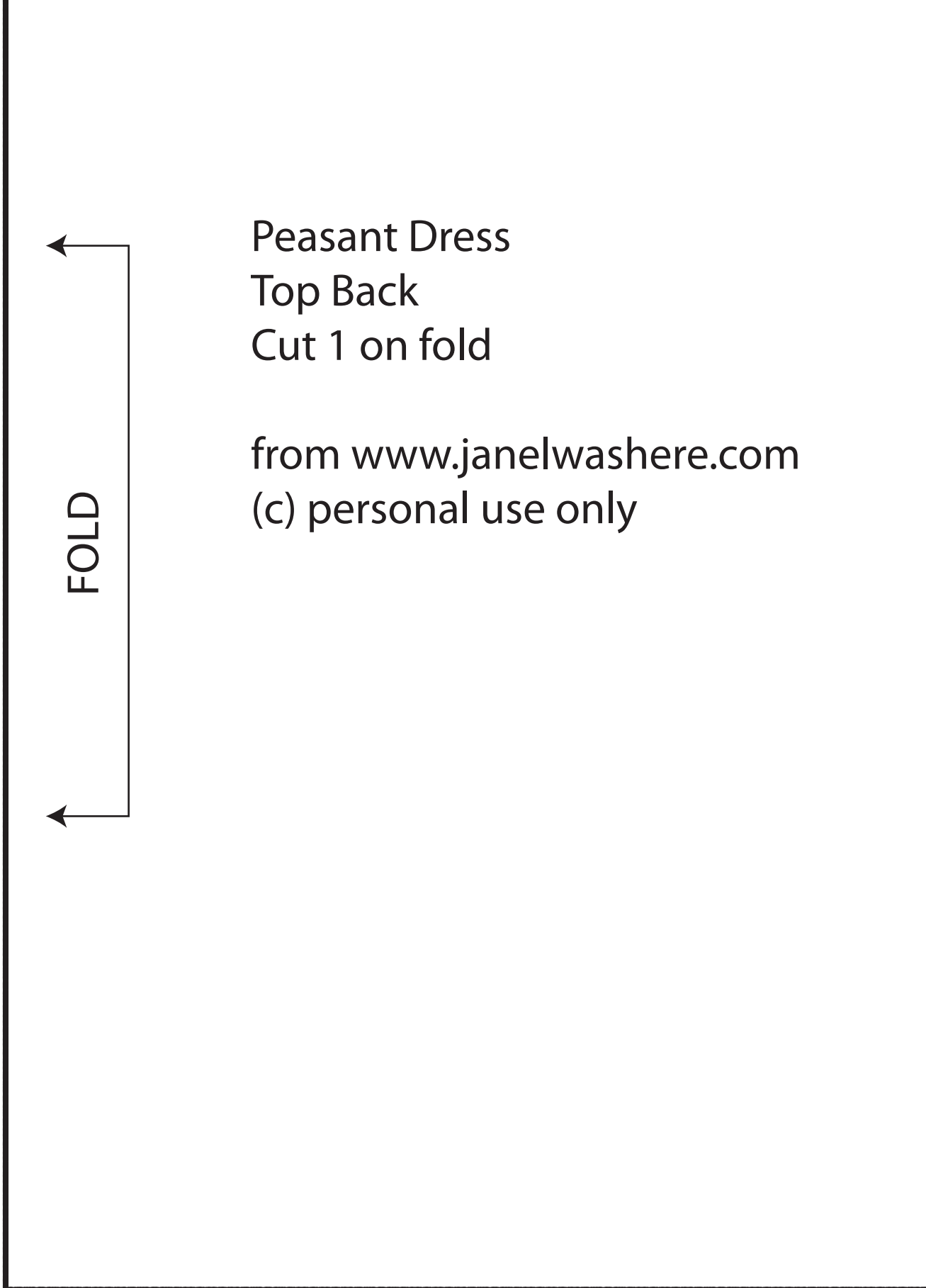
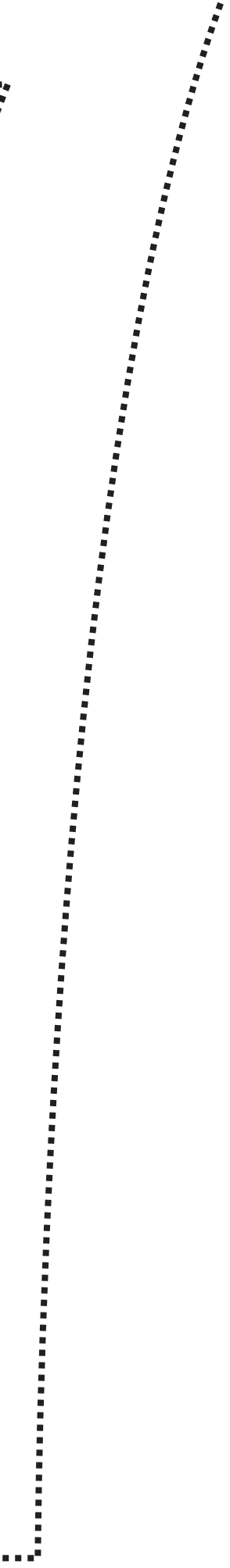
Now finish the waist elastic casing. In my opinion doing the waistband last is easier than gathering the miles of ruffle all as one piece but your mileage may vary.

Hem the ruffle.



Grain of fabric





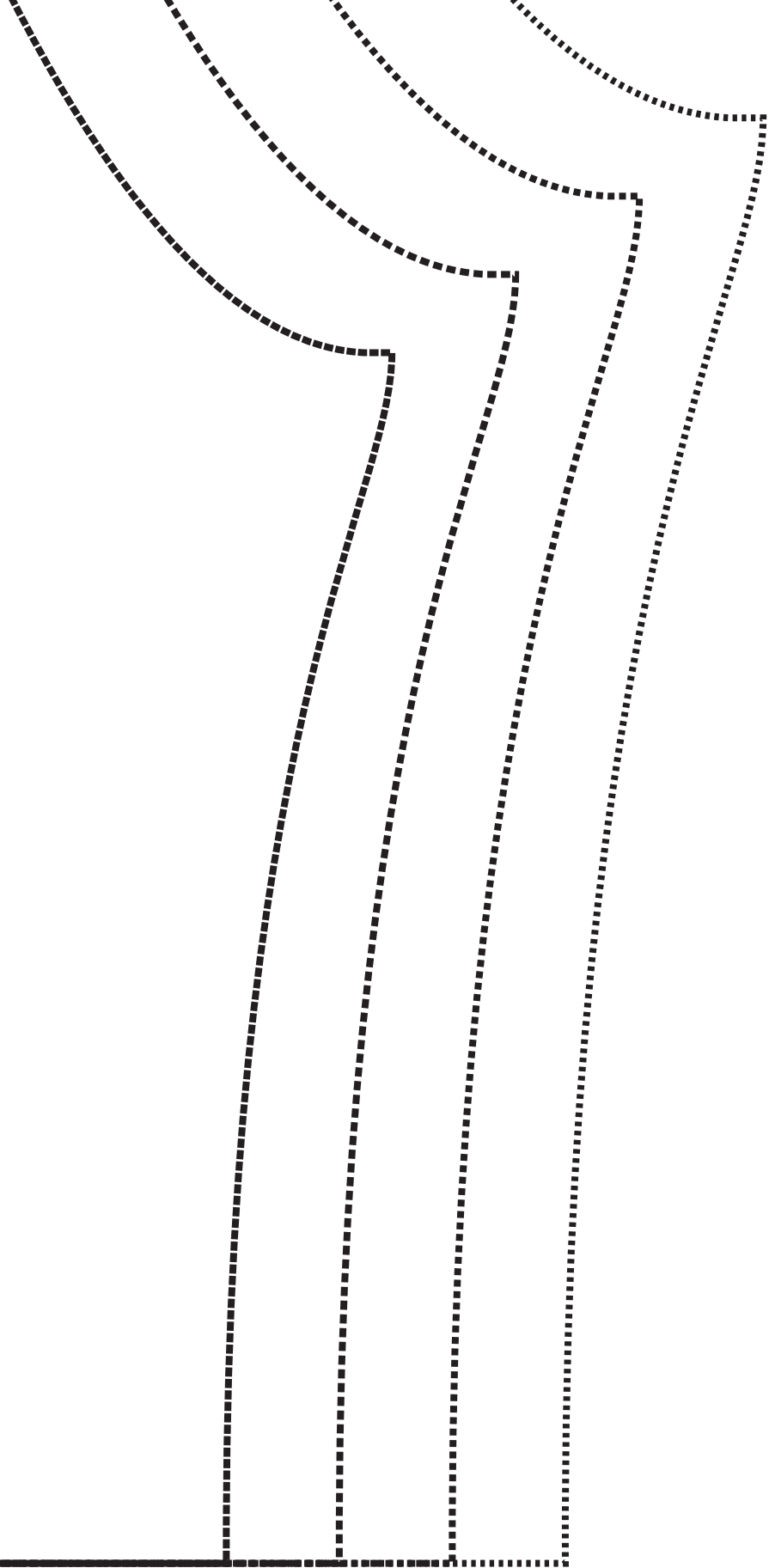
Peasant Dress
Top Back
Cut 1 on fold

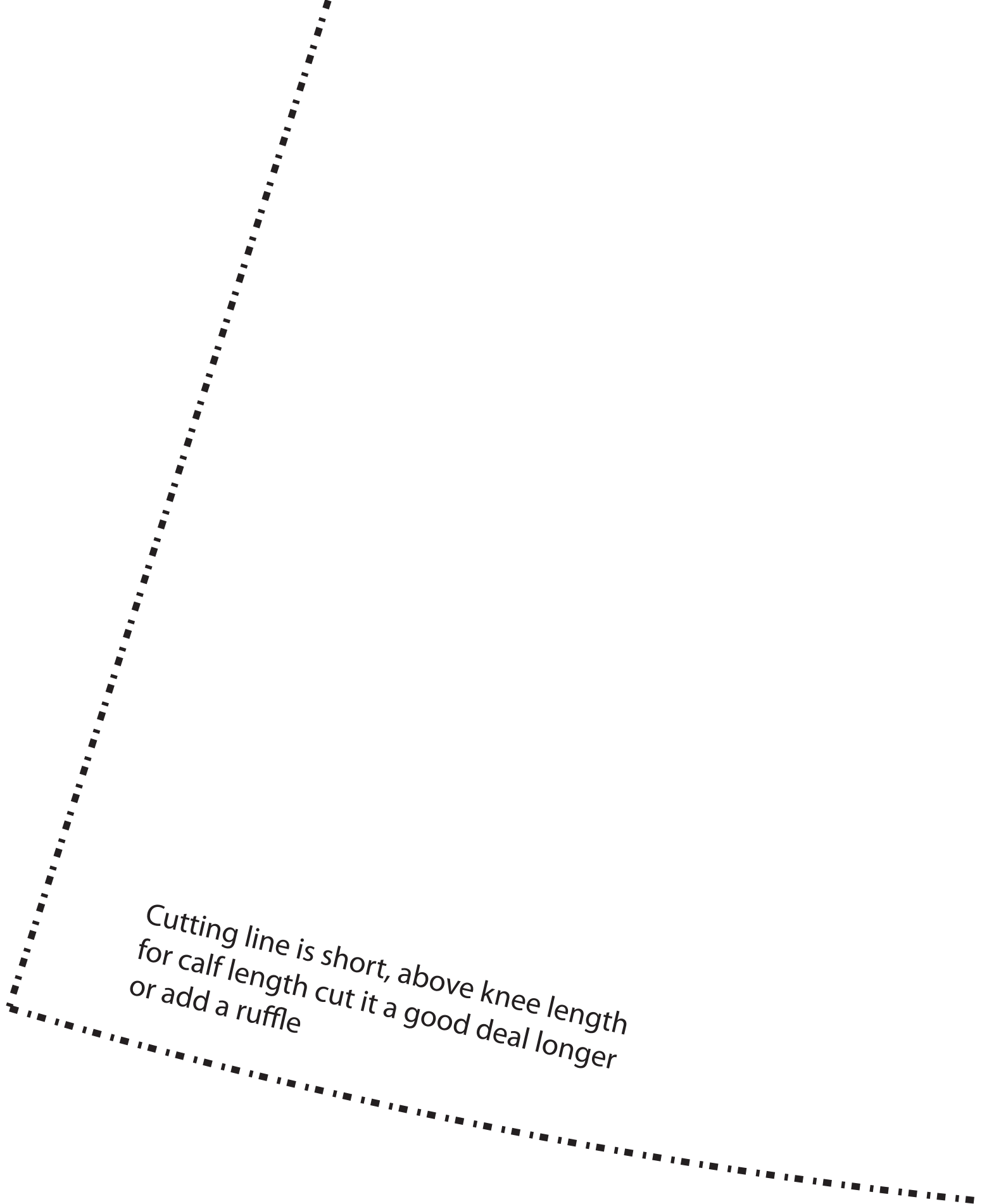
from www.janelwashere.com
(c) personal use only



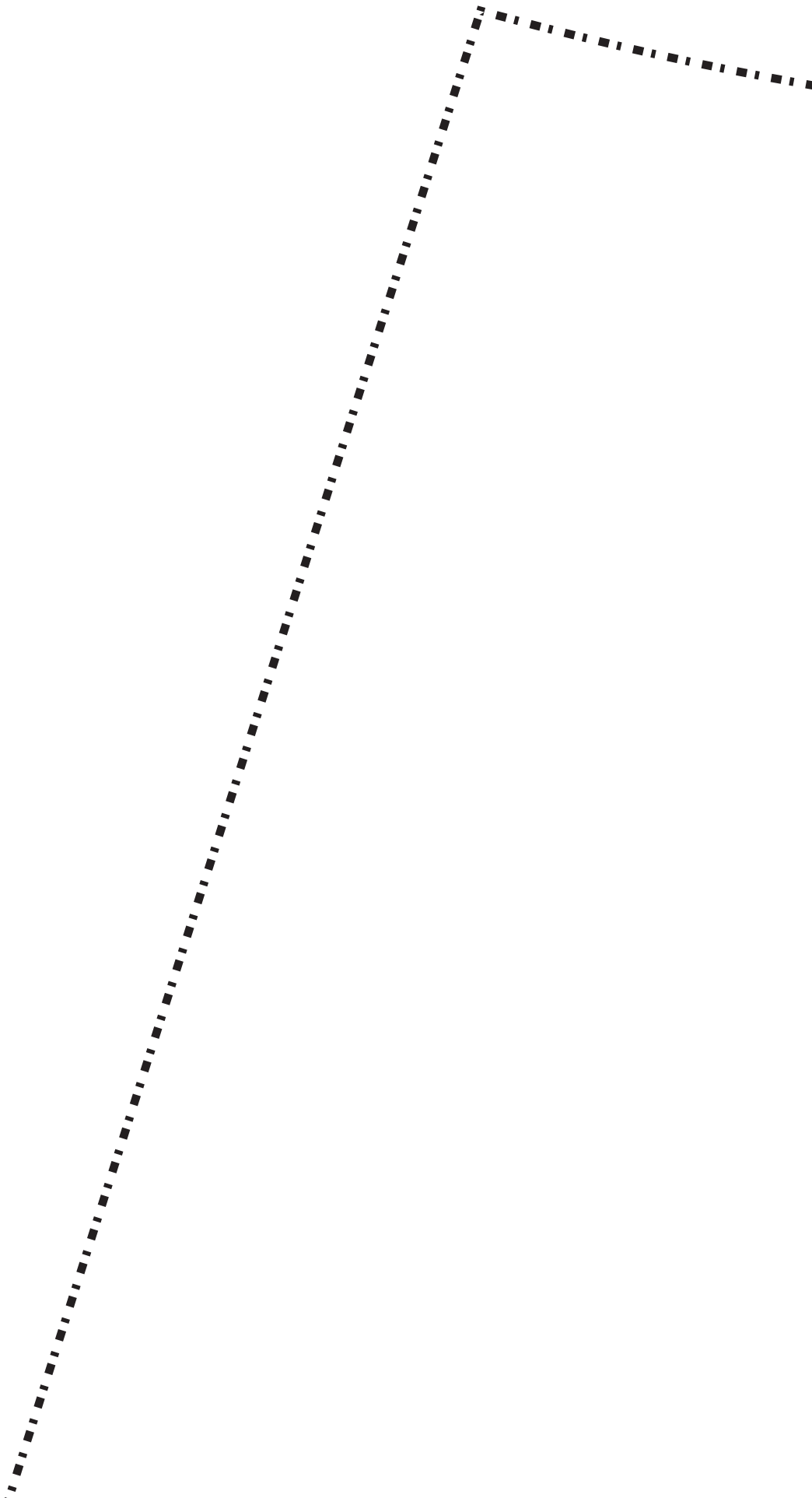


Grain of fabric





Cutting line is short, above knee length
for calf length cut it a good deal longer
or add a ruffle





Peasant Dress

www.janelwashere.com

Skirt piece

Cut 4 OR cut 2 on fold

(fill in corners with extra fabric)

Size Medium

Cut Small 1" narrower, Large 1" wider
and XLarge 2" wider



