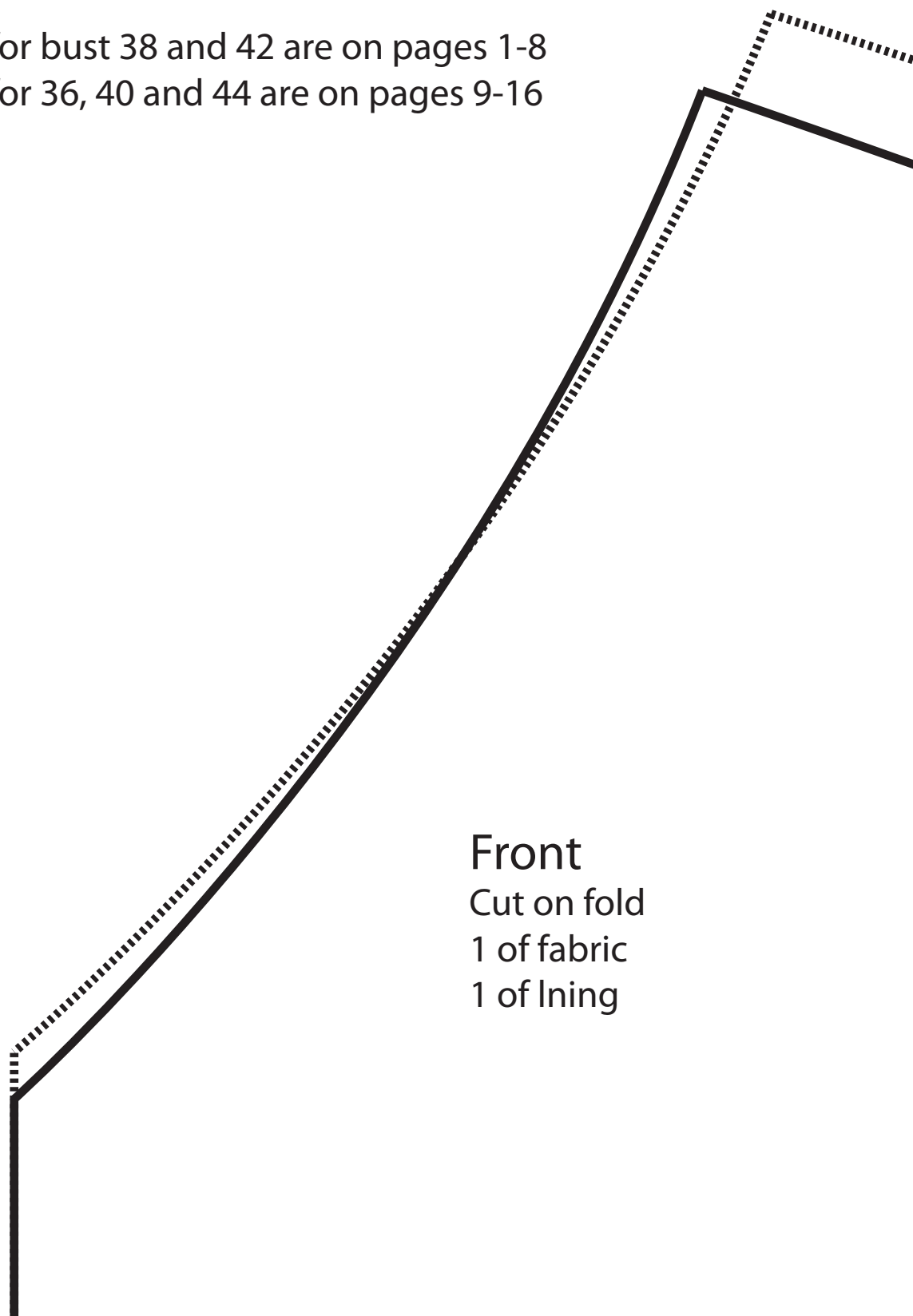
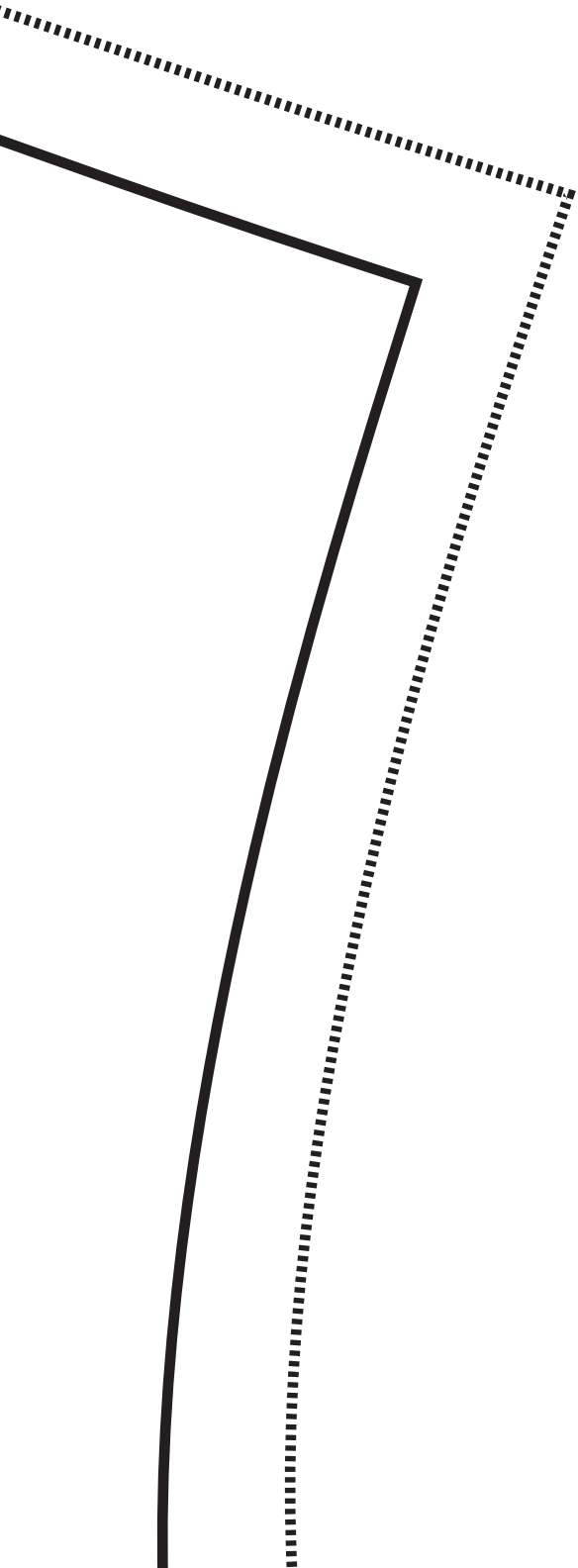


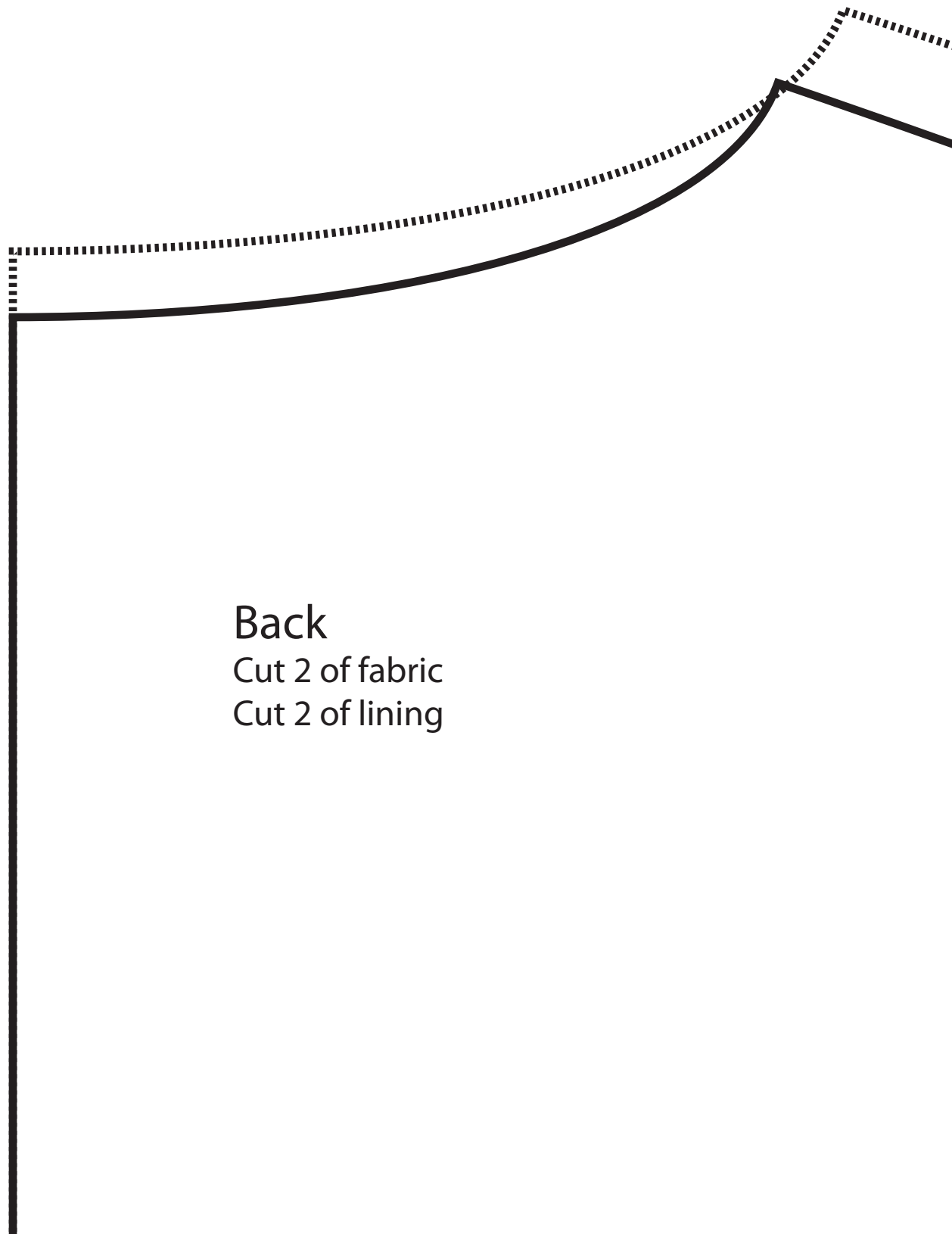
Make sure the pdf
prints at 100% with
no scaling

Cutting lines for bust 38 and 42 are on pages 1-8
Cutting lines for 36, 40 and 44 are on pages 9-16

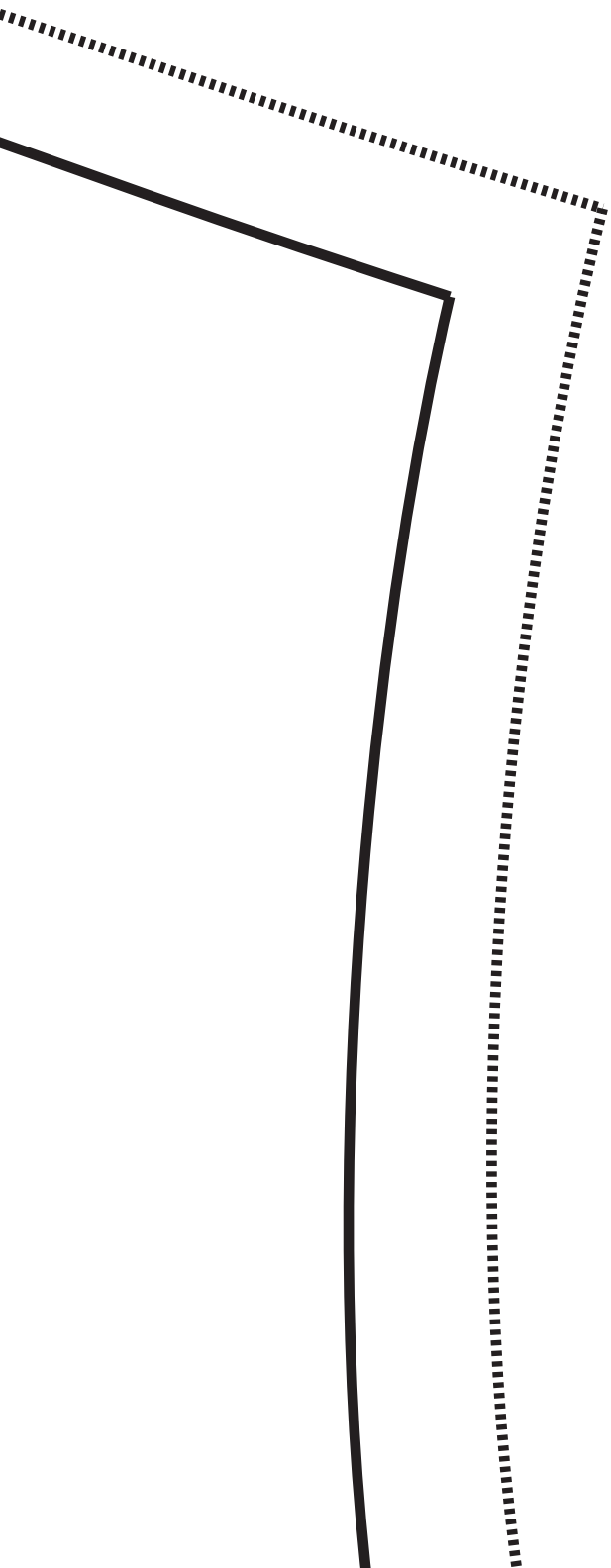


Front
Cut on fold
1 of fabric
1 of lining



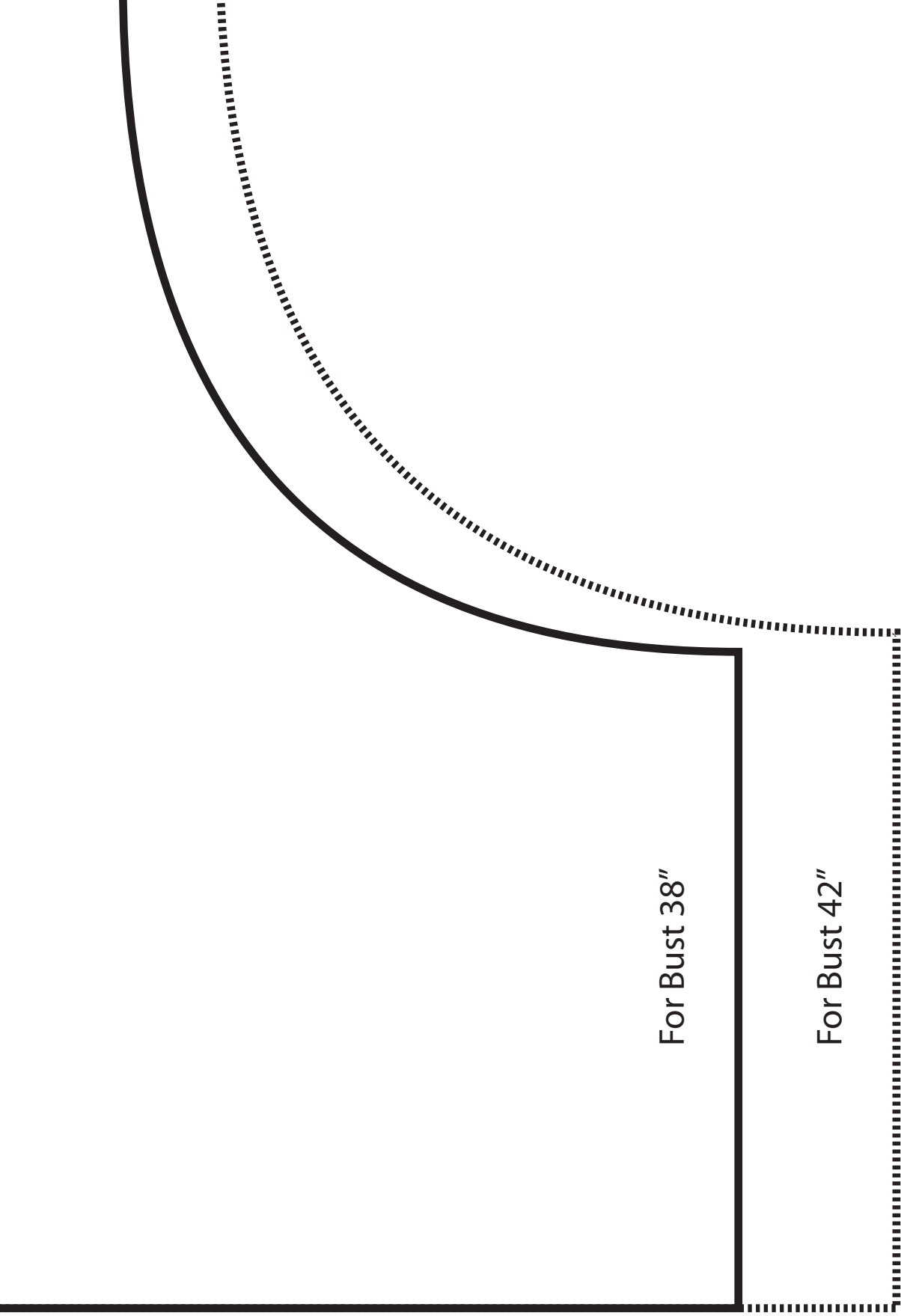


Back
Cut 2 of fabric
Cut 2 of lining





Basic jumper pattern from
www.janelwashere.com
janelwashere@gmail.com
1/2 inch seams included



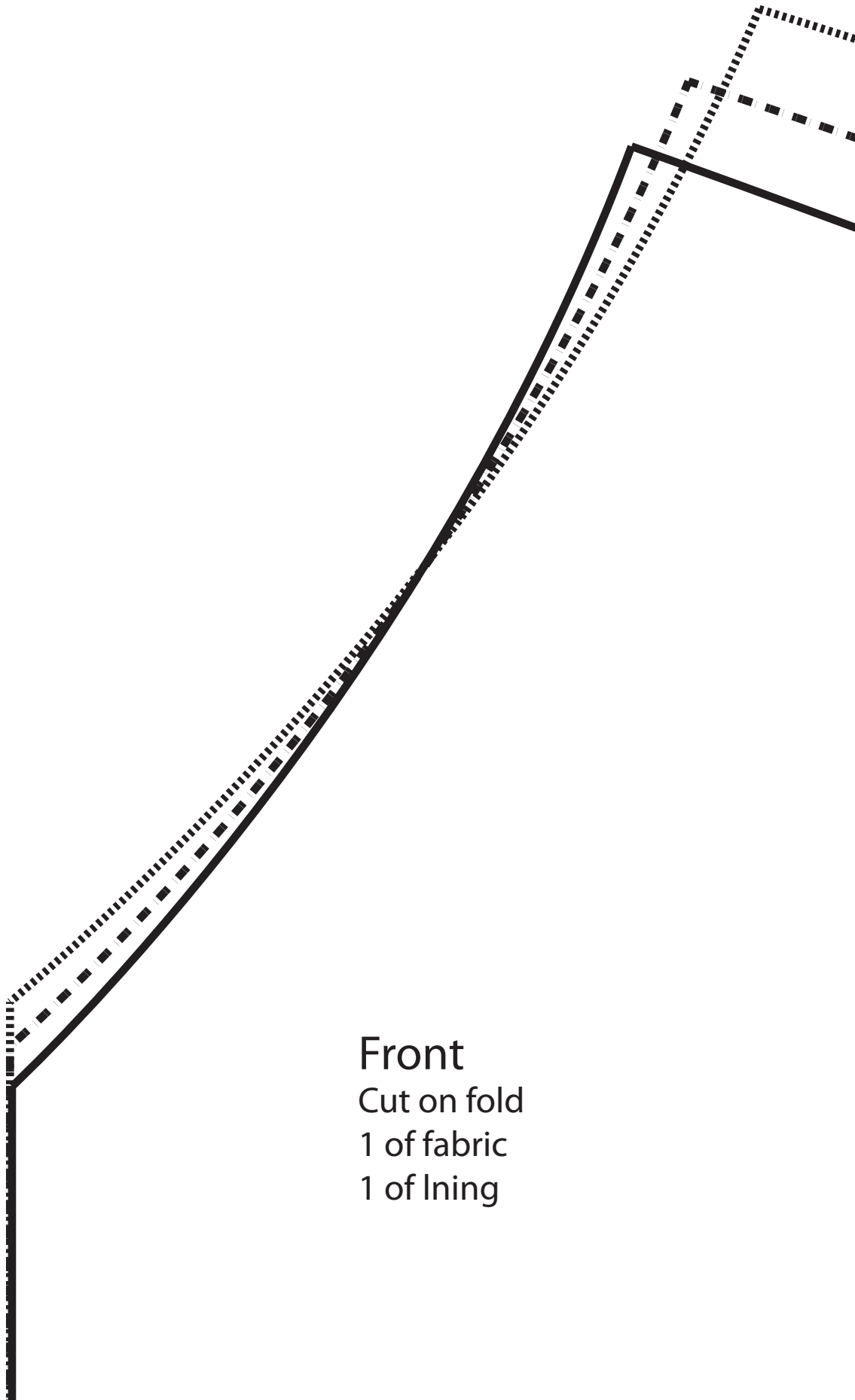
For Bust 38"

For Bust 42"

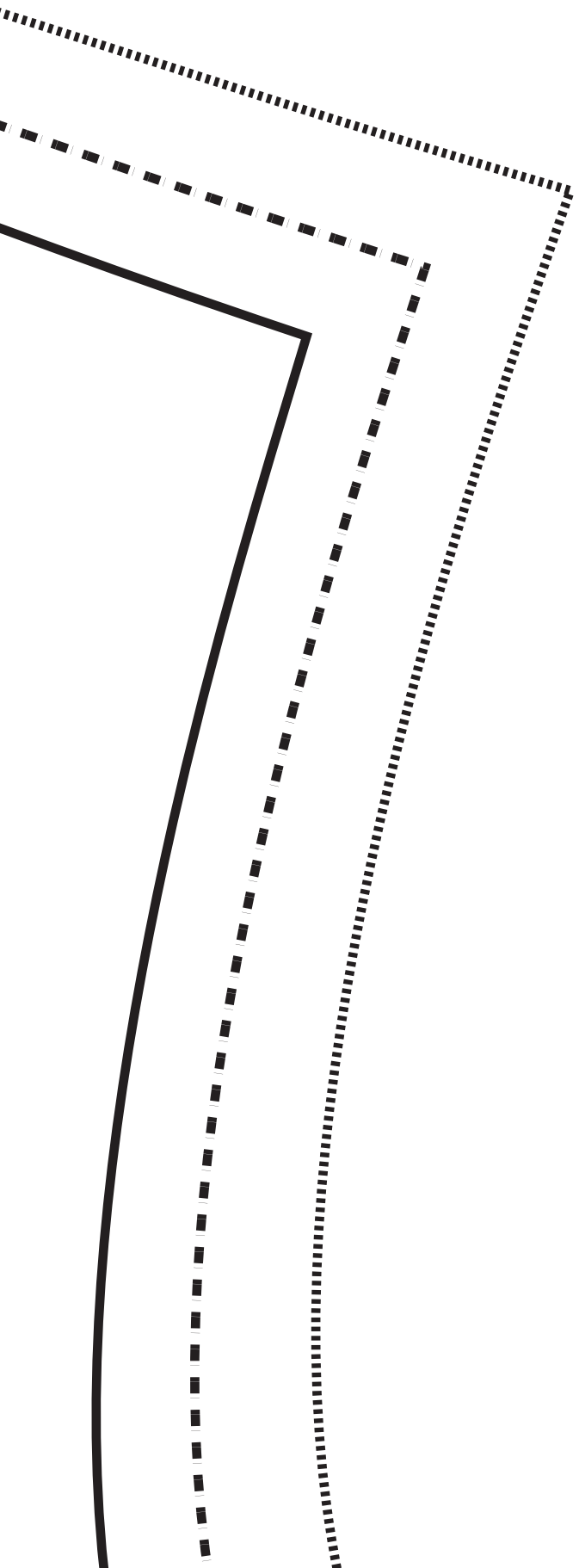
Basic jumper pattern from
www.janelwashere.com
janelwashere@gmail.com
1/2 inch seams included

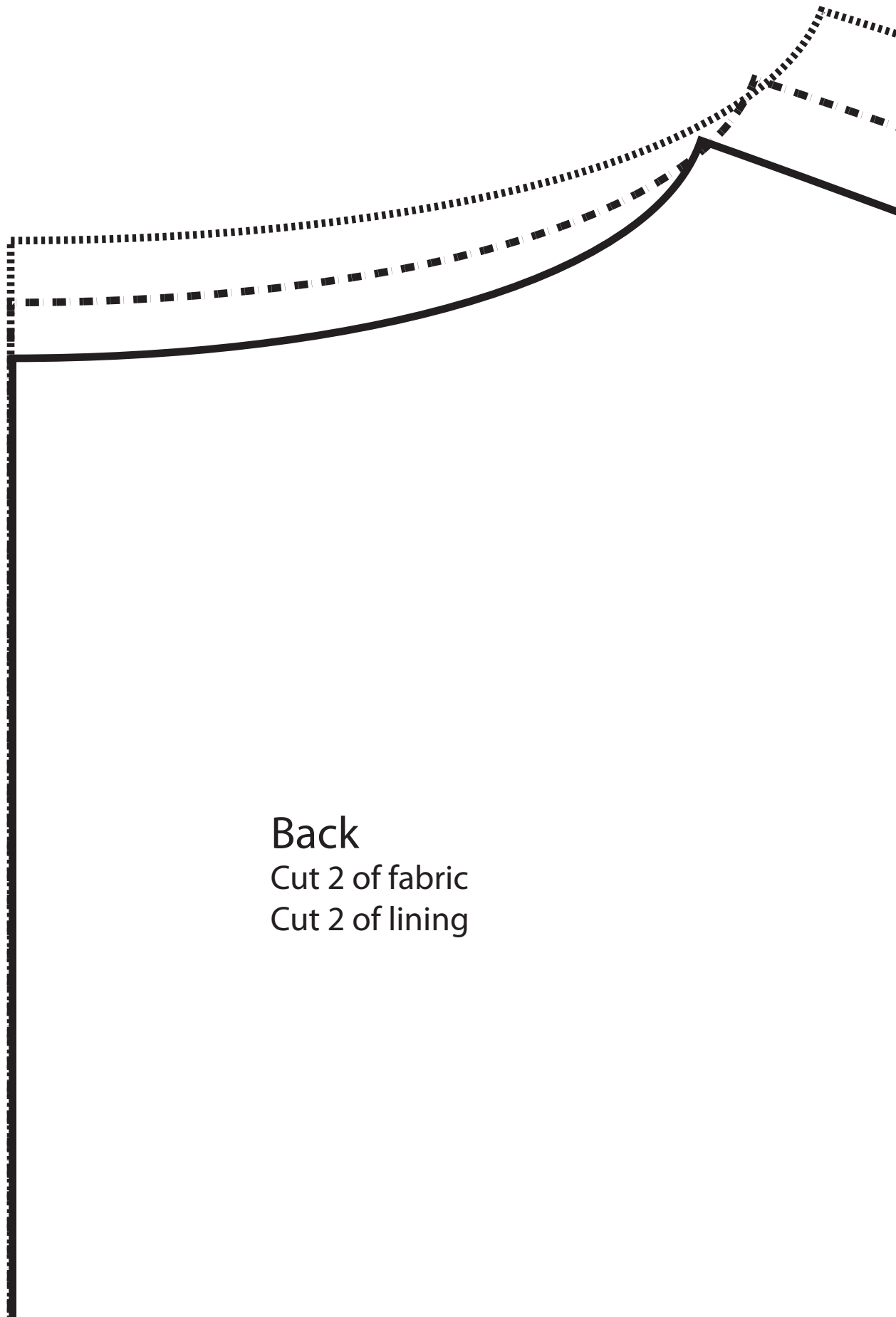
For Bust 38"

For Bust 42"

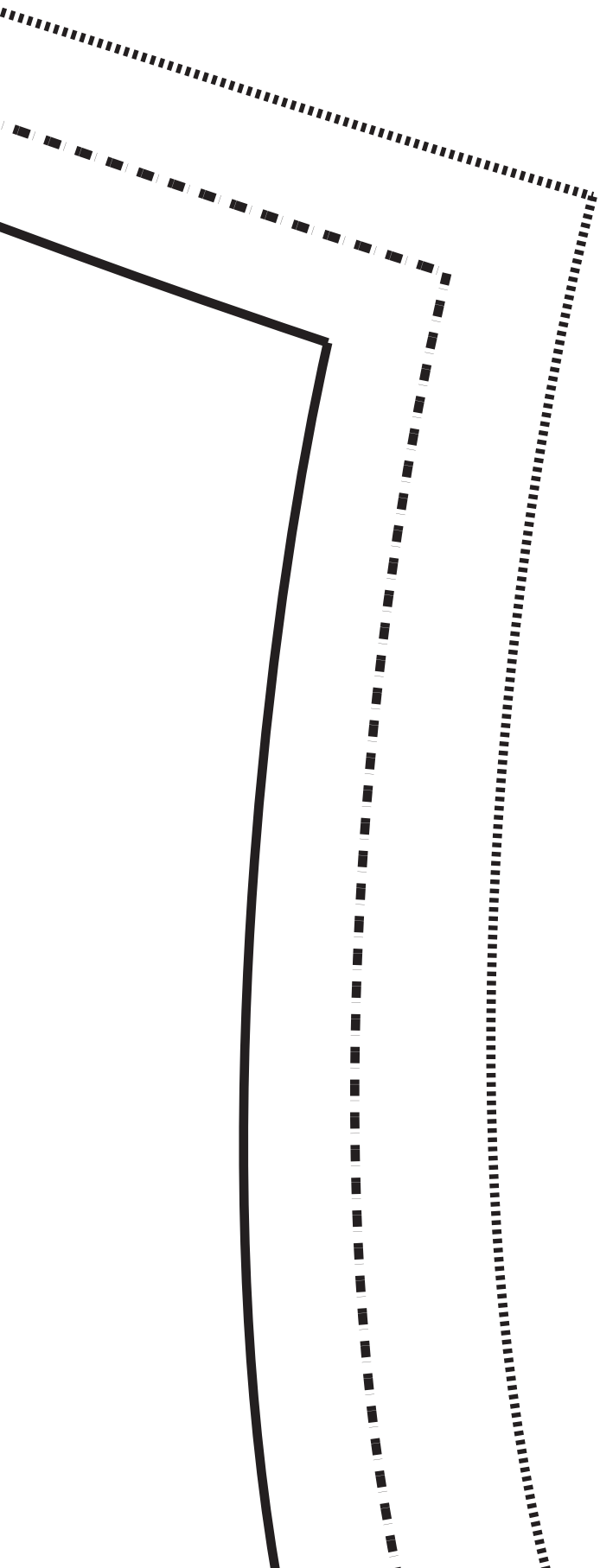


Front
Cut on fold
1 of fabric
1 of lining



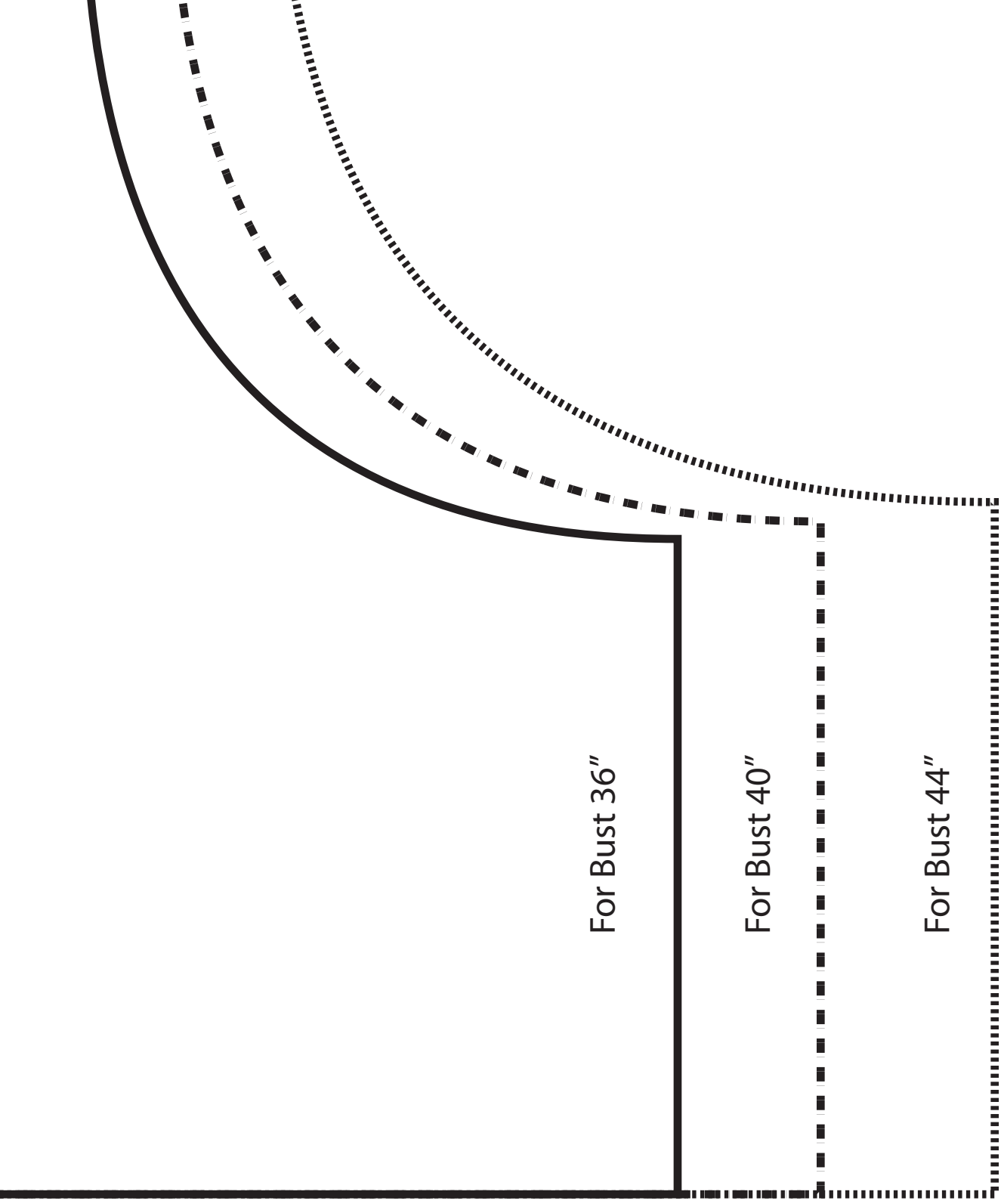


Back
Cut 2 of fabric
Cut 2 of lining





Basic jumper pattern from
www.janelwashere.com
janelwashere@gmail.com
3/8 inch seams included



Basic jumper pattern from
www.janelwashere.com
janelwashere@gmail.com
3/8 inch seams included

