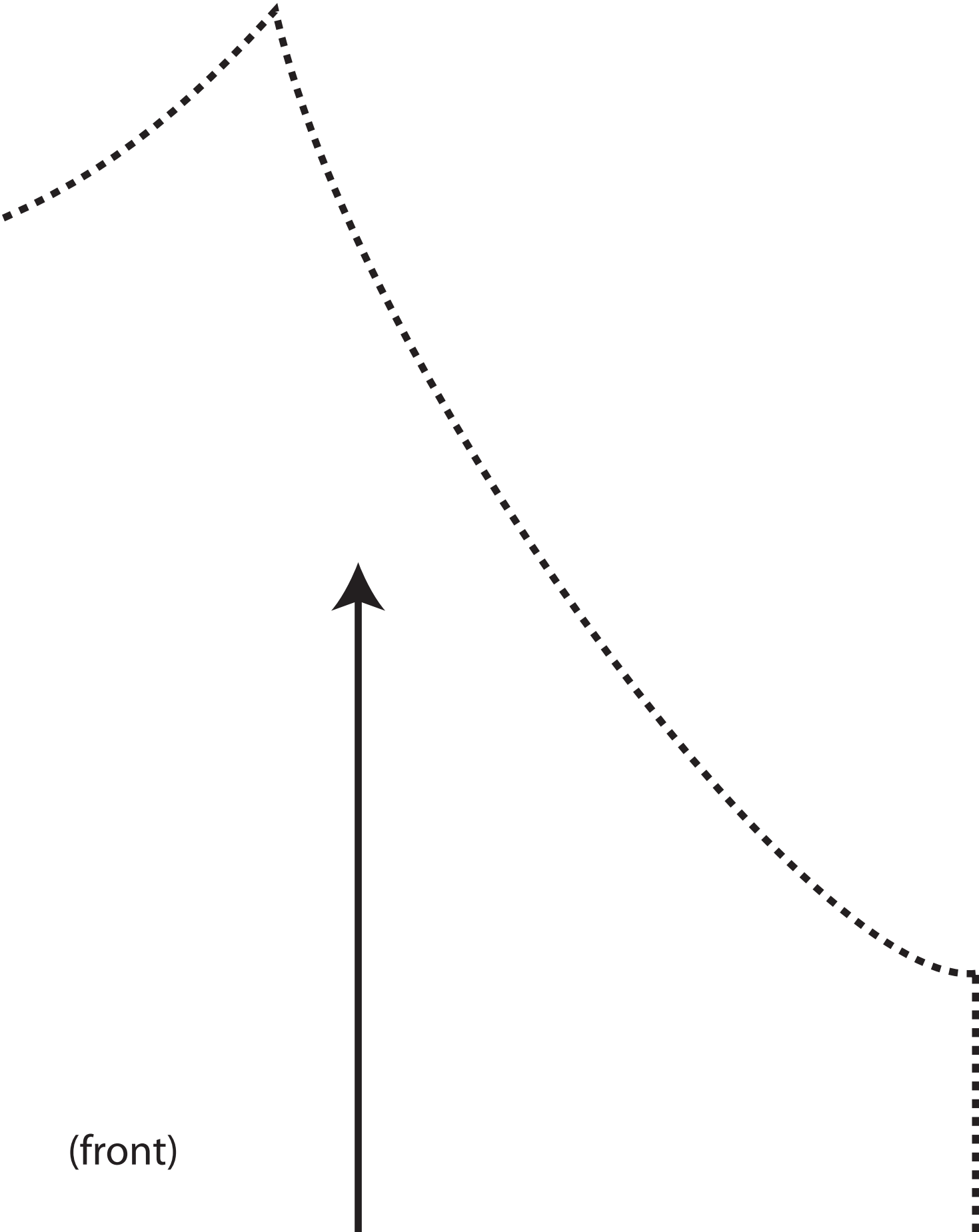


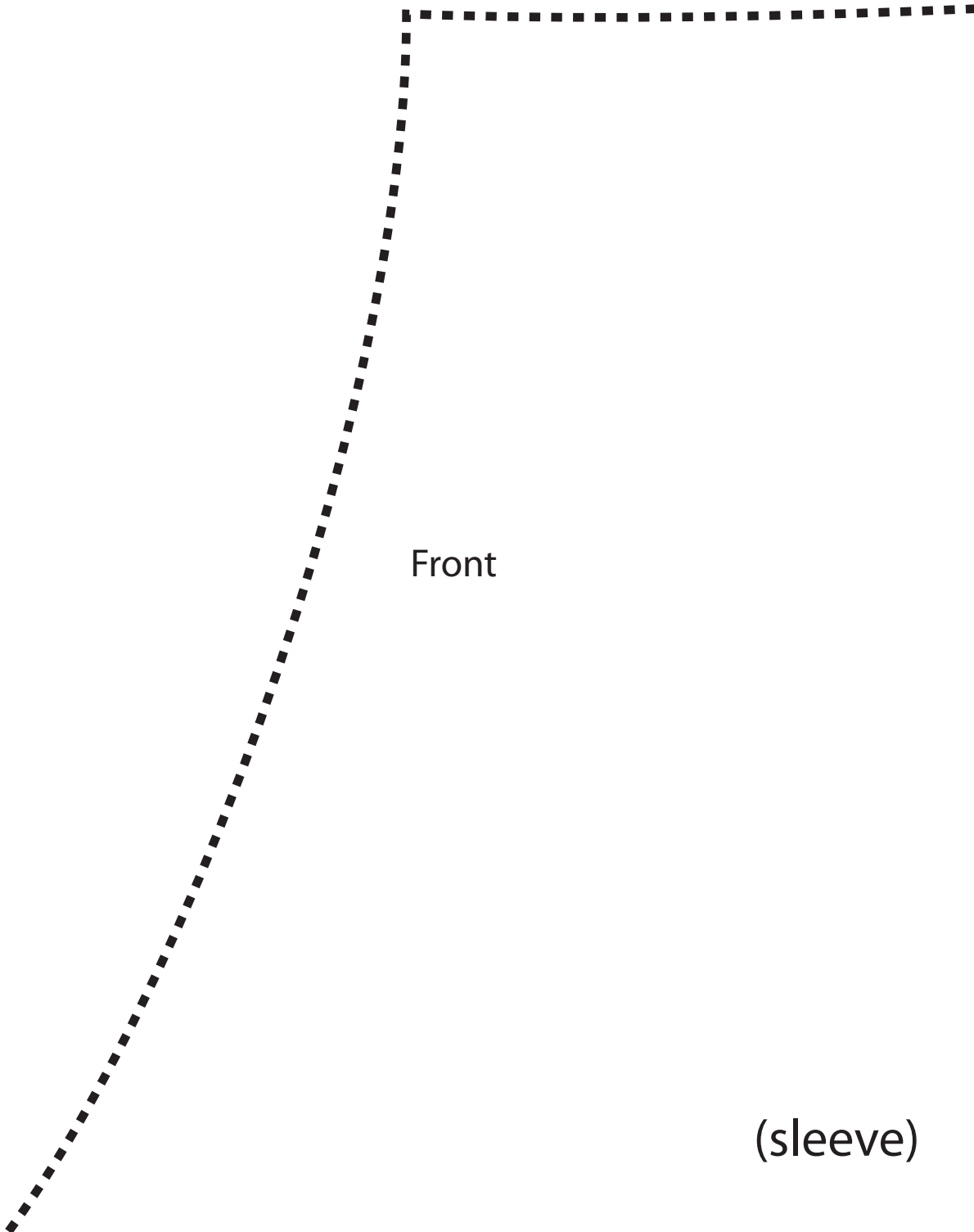
Peasant Dress
Front
Cut 1 on fold

FOLD

(front)

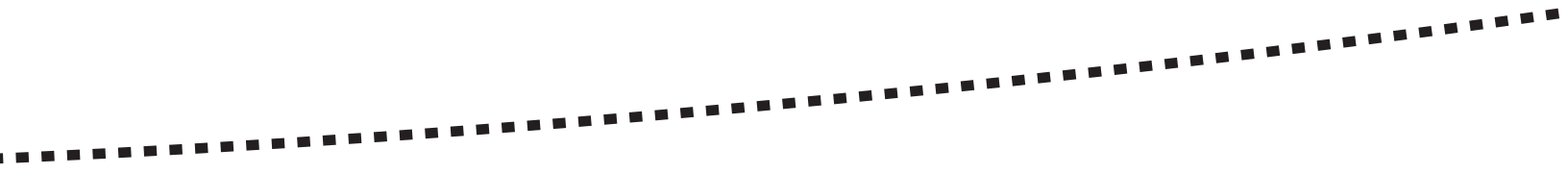


(front)



Front

(sleeve)

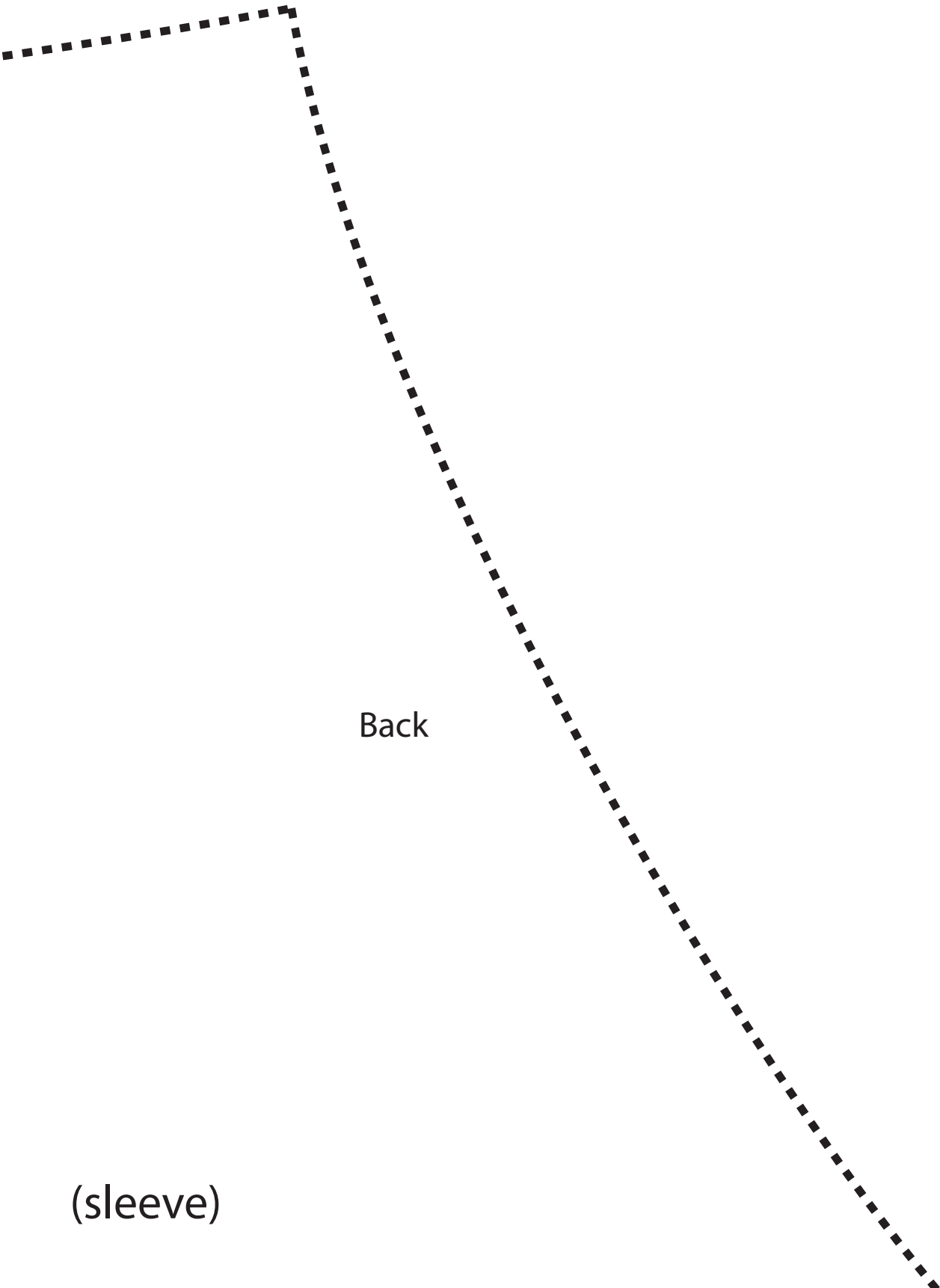


Peasant Dress
Sleeve
Cut 2



(sleeve)

(sleeve)



Back

(sleeve)

Peasant Dress pattern size MEDIUM
from janelwashere.com
janelwashere@gmail.com

Half-inch seams allowances throughout

Ruffle piece is cut 12" by 44" (width of fabric)
Cut four of ruffle pieces

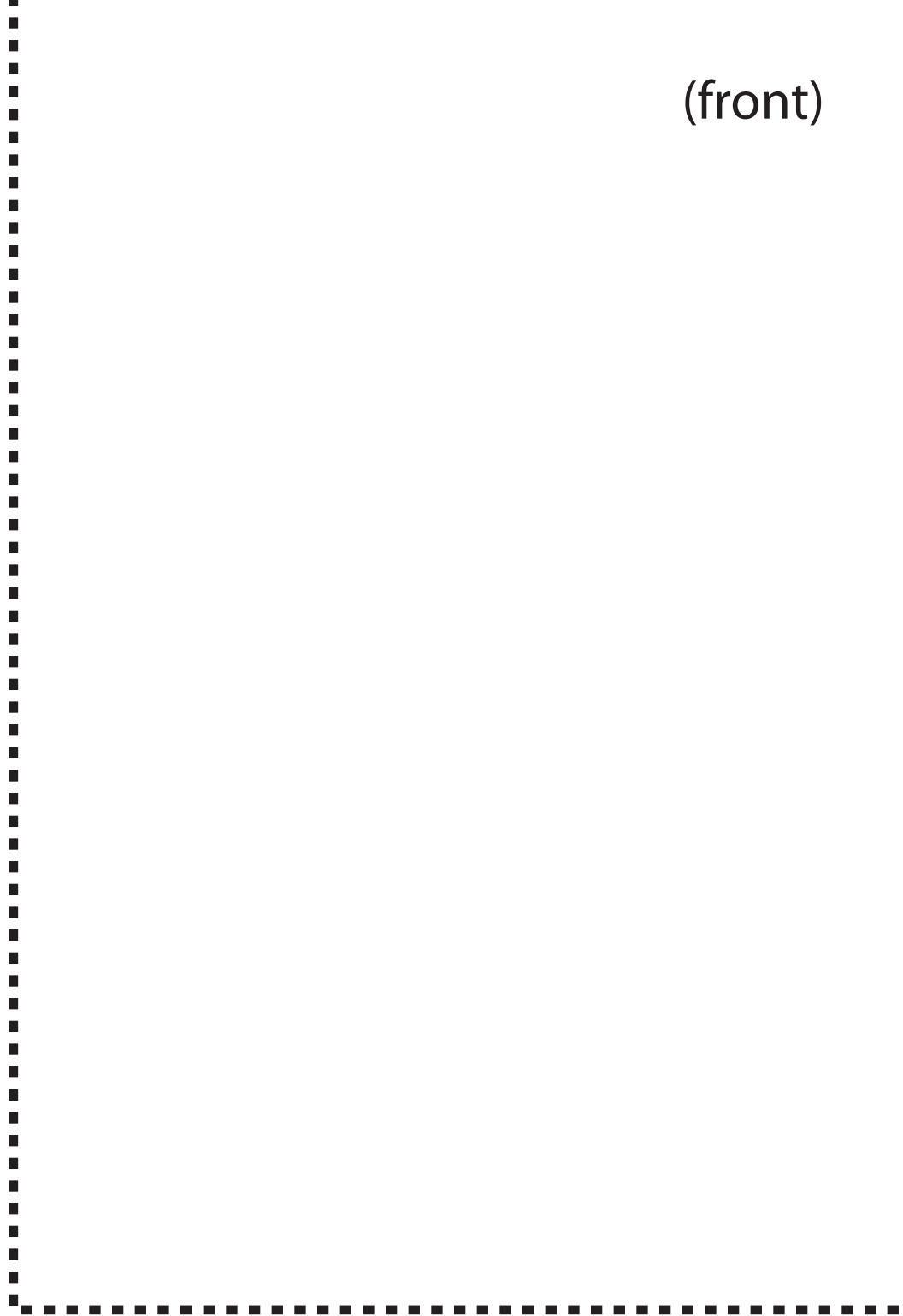
Instructions from memory, if you spot a mistake
please let me know :-)

Sew sleeves to the front and back pieces, then fold
over the top edge neckline into a casing for 1/4" elas-
tic.

Sew two skirt pieces together to form a skirt front and
two pieces to form a skirt back.

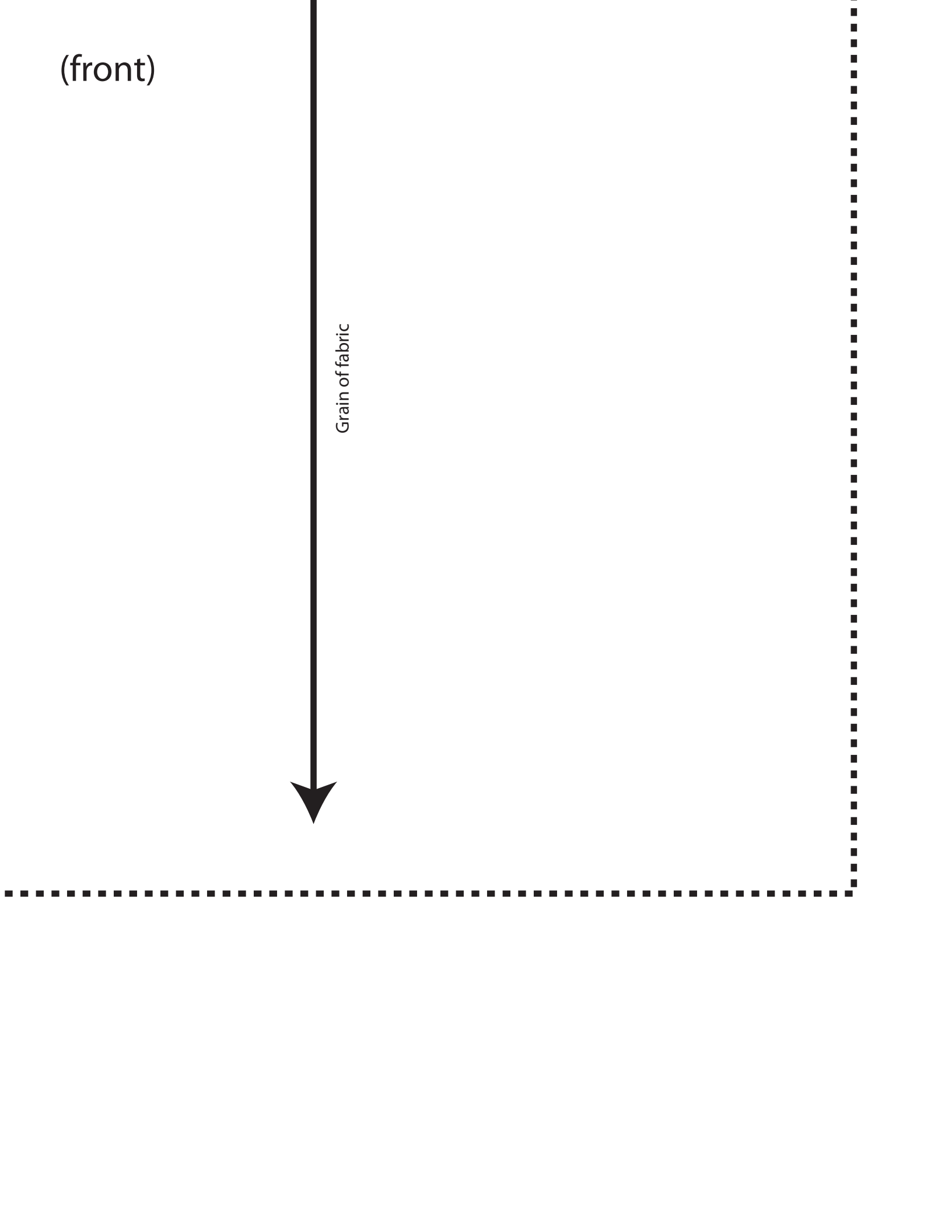
Sew skirt front to bodice front and skirt back to
bodice back. Make either the top or skirt pieces over-
hang by an inch and a half or so in order to have
something to fold over as a casing for the waist elas-
tic. If you forget to do this you'll have to use a sepa-
rate piece as a casing like I did.

(front)

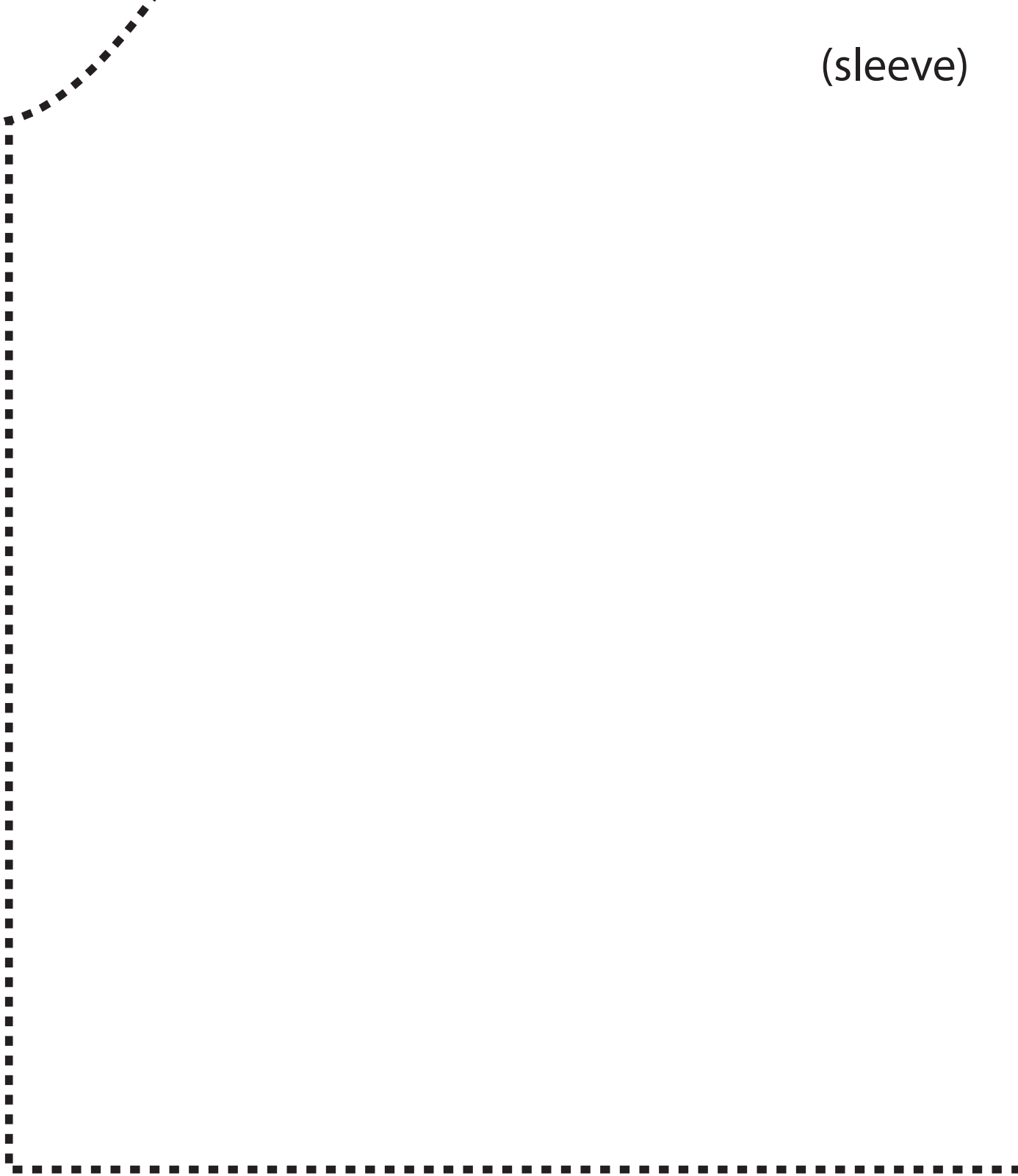


(front)

Grain of fabric



(sleeve)



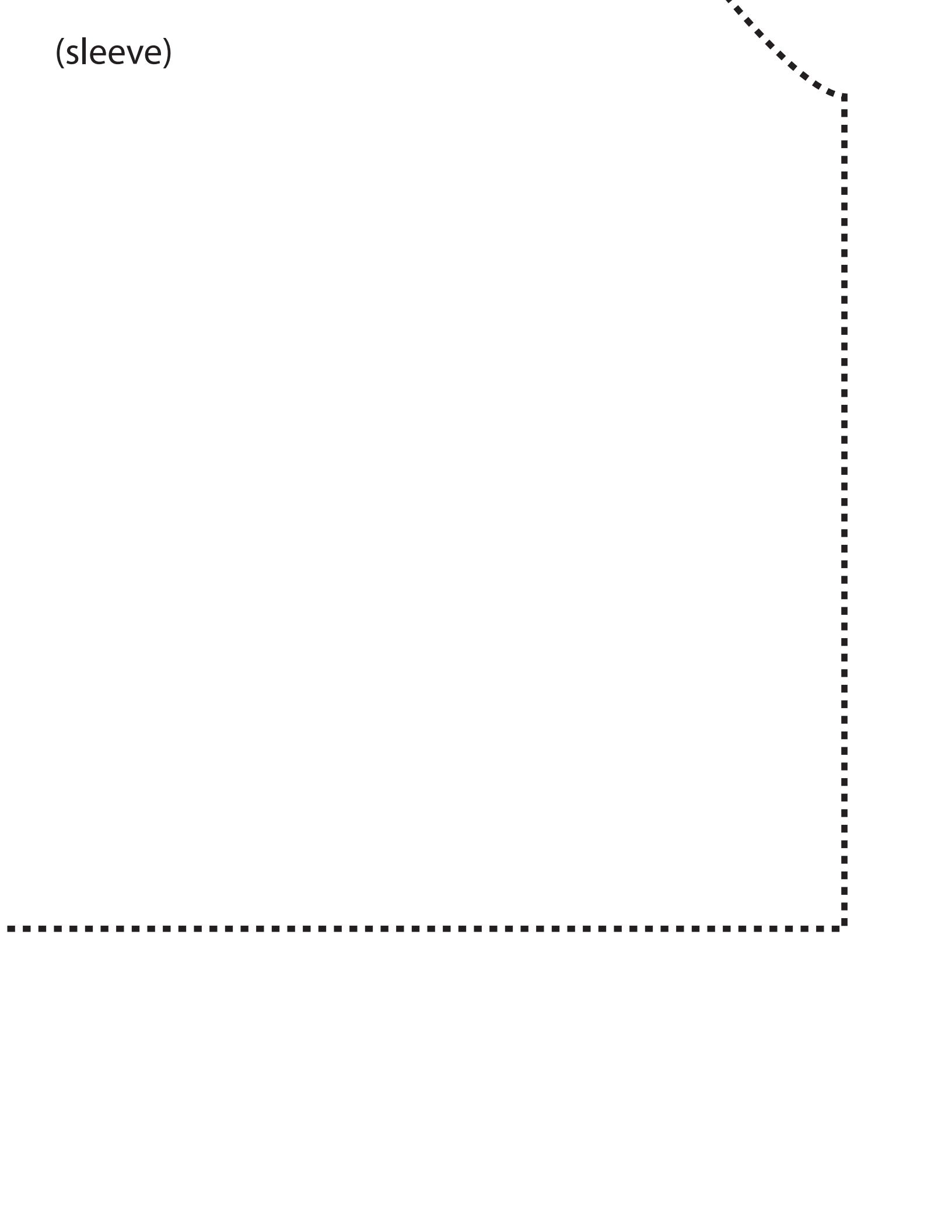
(sleeve)

(sleeve)

Grain of fabric



(sleeve)



I like to wait with the side seams until last. That way the ruffle gathering is in two flat parts and the sleeve hem can be done flat.

Sew two ruffle pieces together, gather and sew to skirt front, repeat for skirt back.

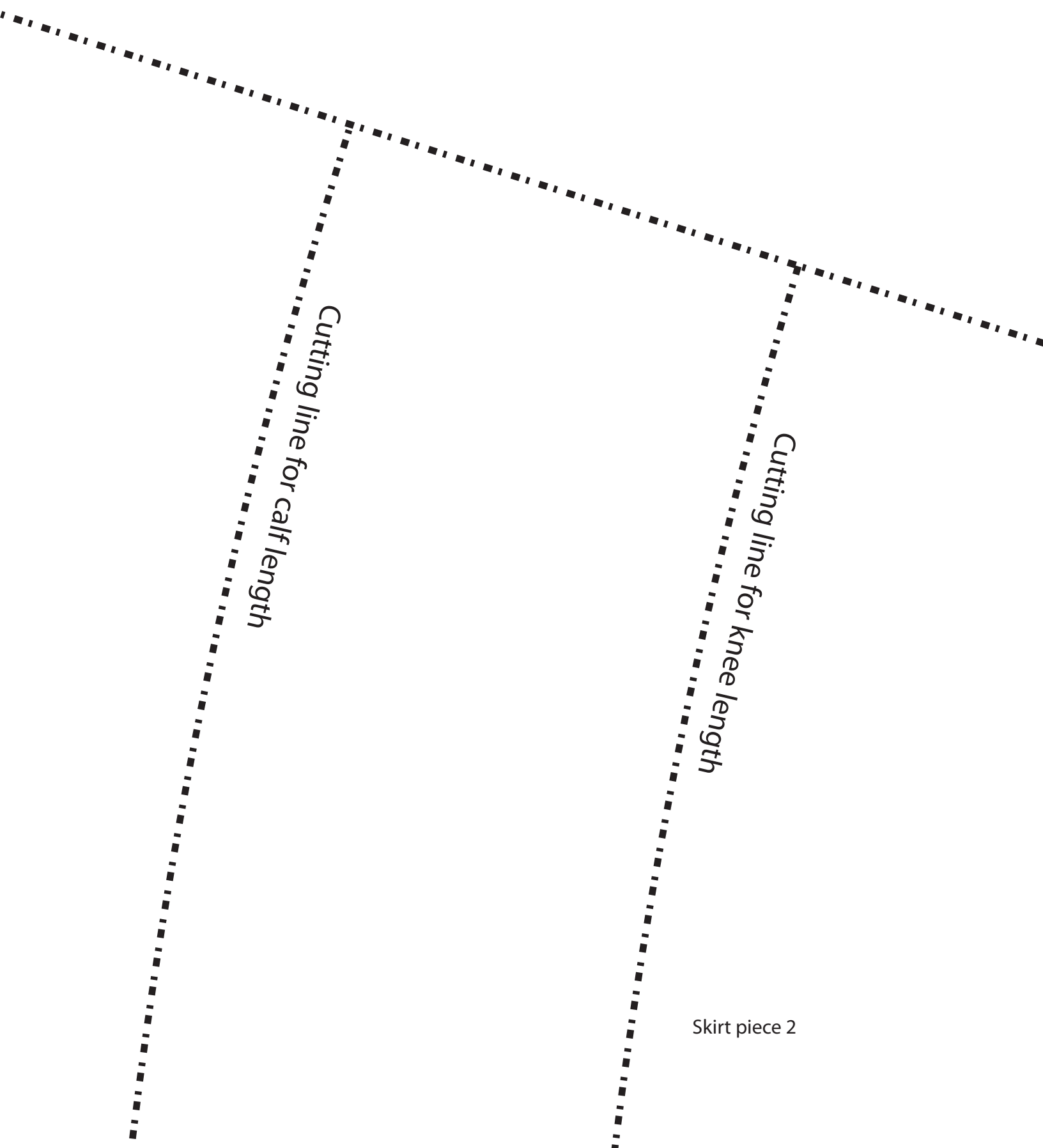
Make the sleeve elastic casing, just don't sew clear to the edges, leave an inch or two unsewn.

Sew down the entire side starting at the sleeve, under the arms, down the bodice and skirt to the bottom of the ruffle.

Finish the sleeve casing, hem the ruffle and put in the elastic.

Cutting line for ankle length

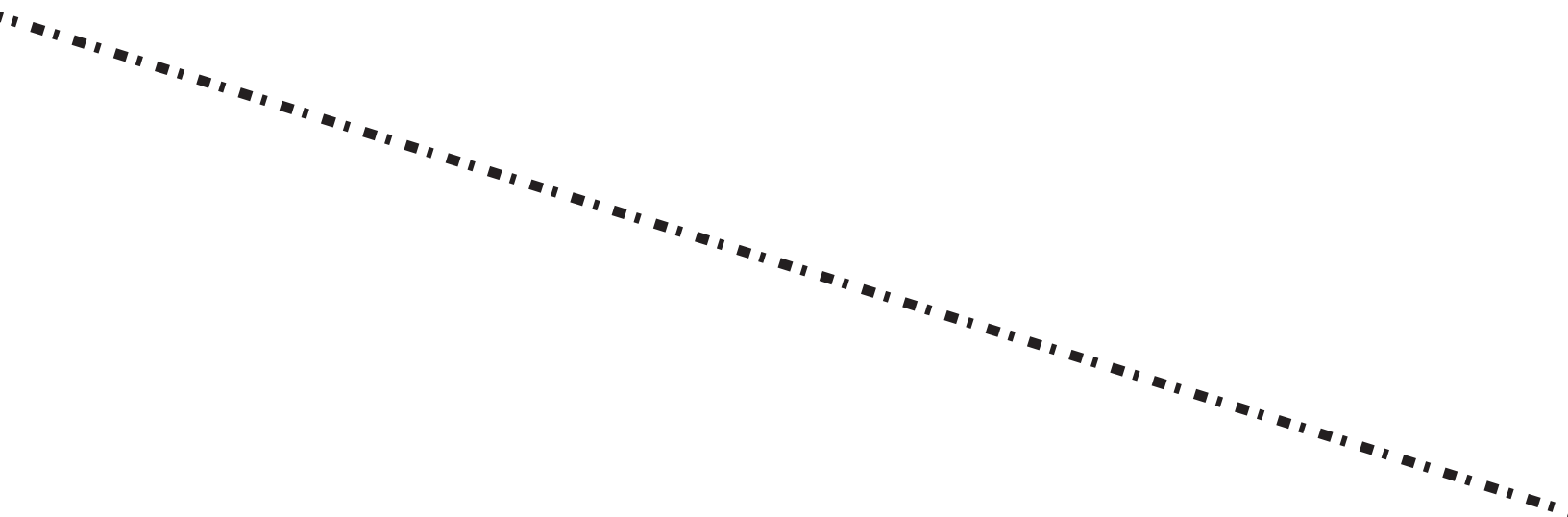
Skirt Piece 1



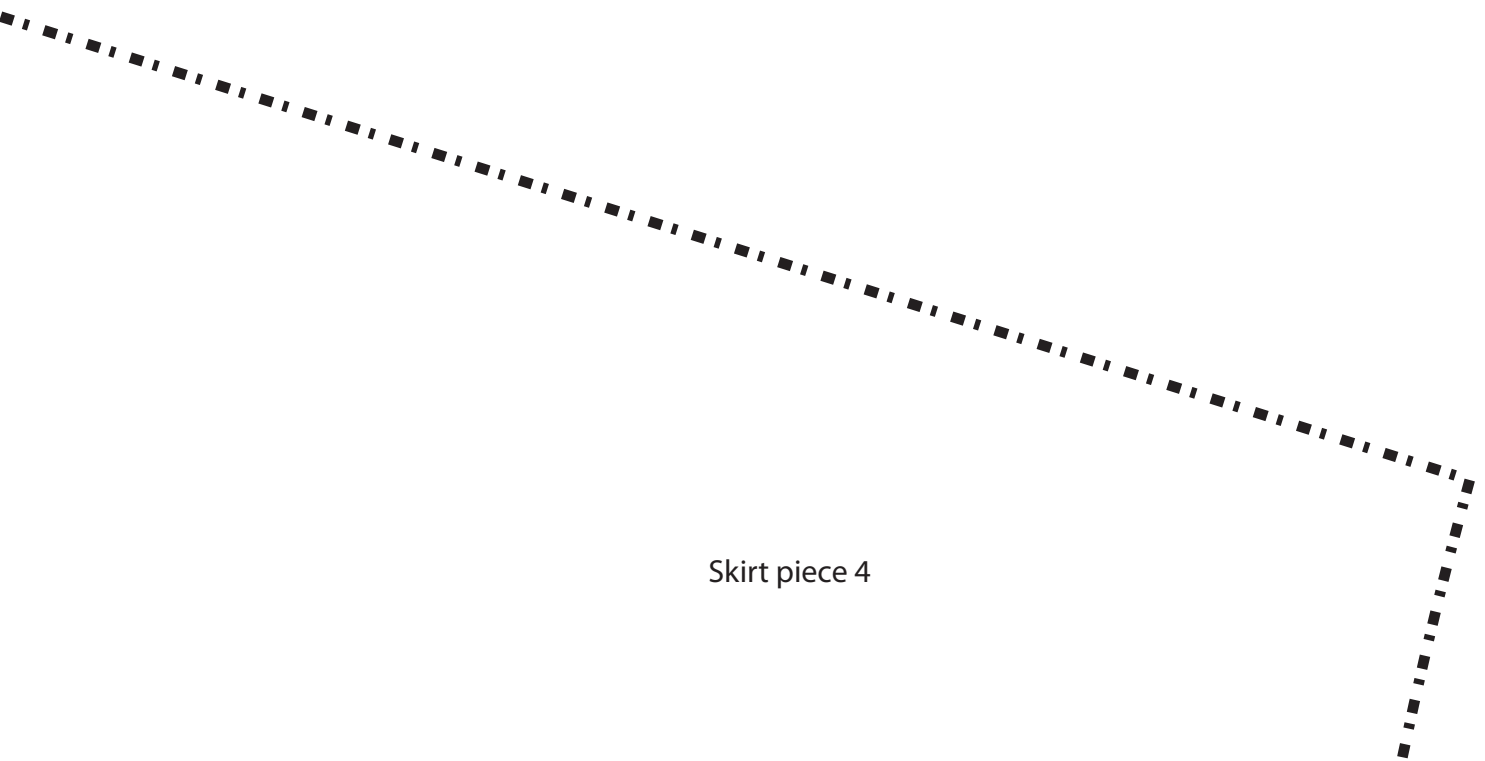
Cutting line for calf length

Cutting line for knee length

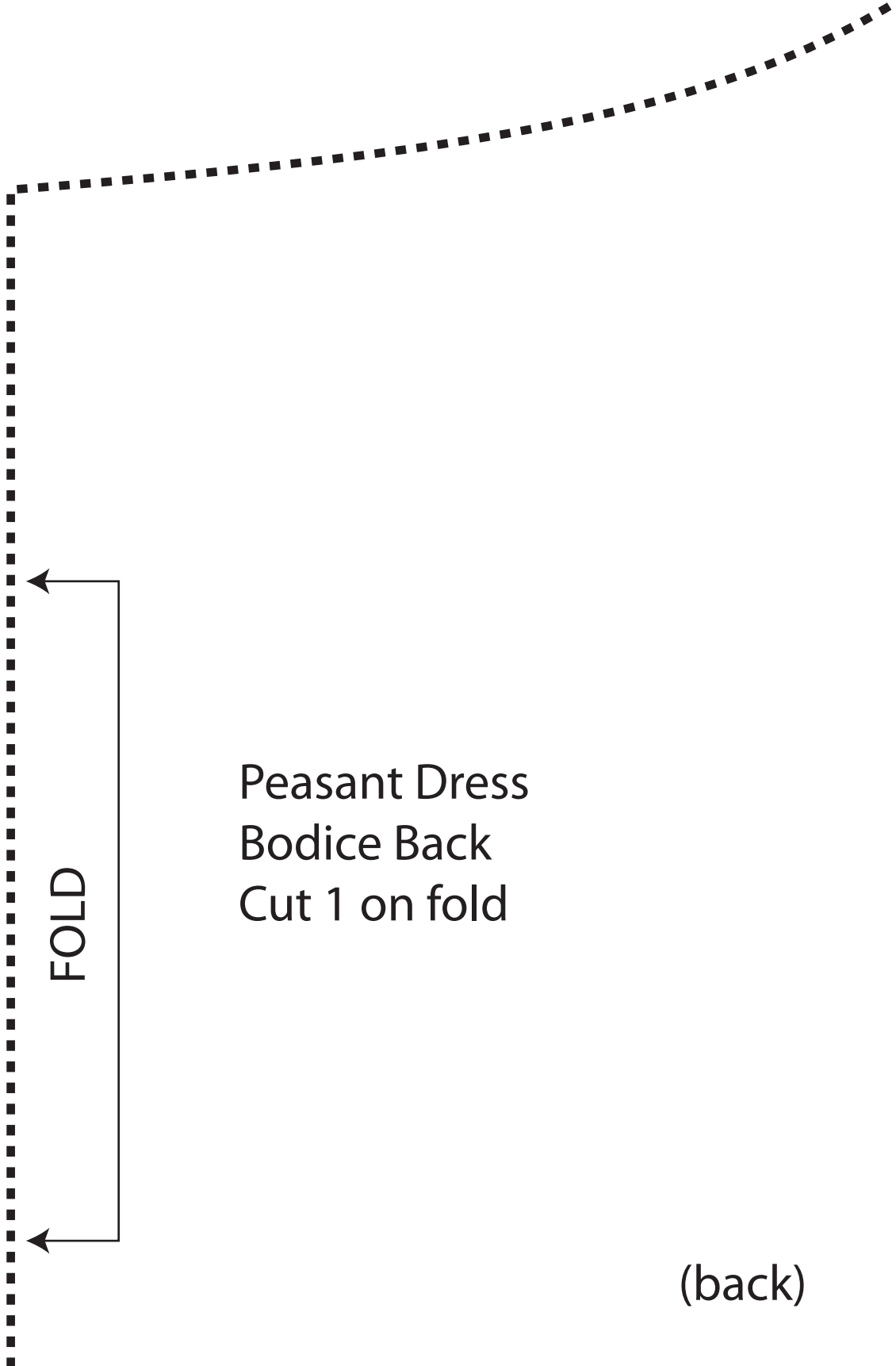
Skirt piece 2



Skirt piece 3

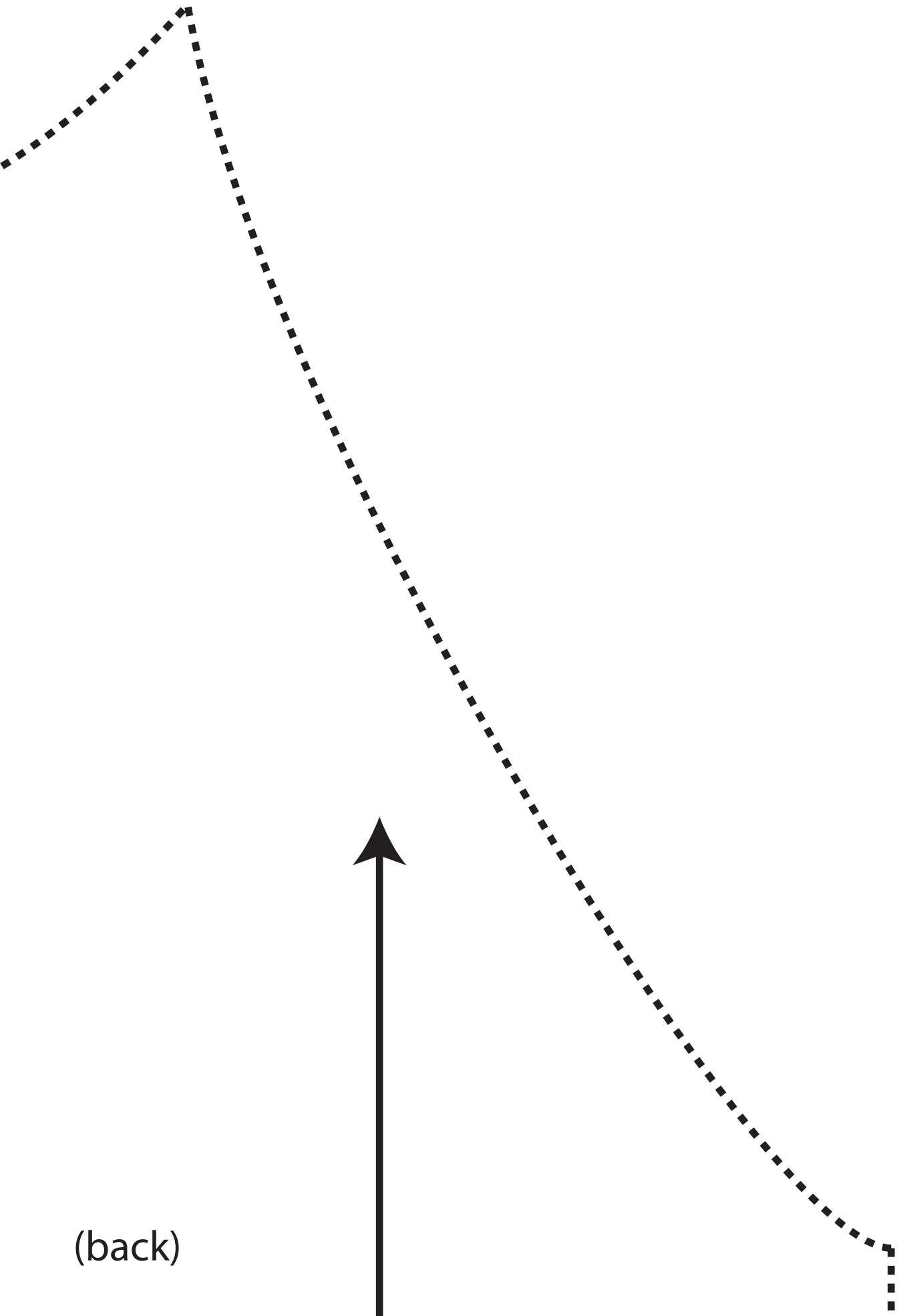


Skirt piece 4



Peasant Dress
Bodice Back
Cut 1 on fold

(back)



(back)



Skirt piece 5

Skirt piece 6

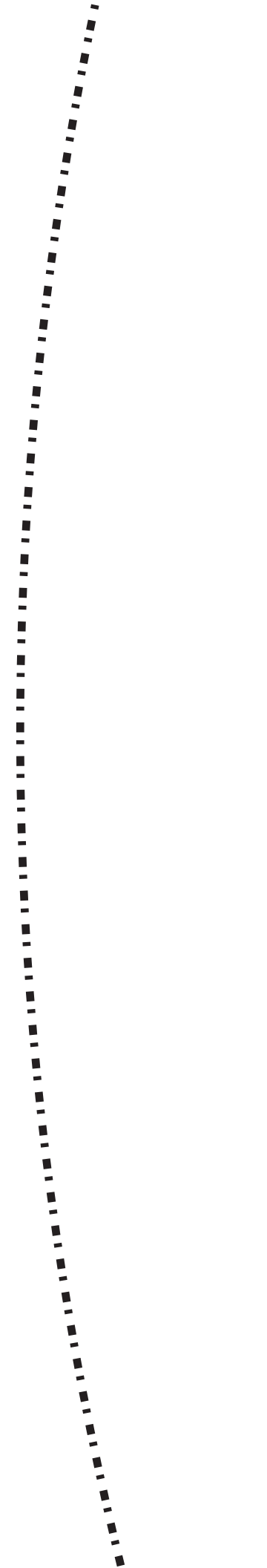


Peasant Dress
Skirt
Cut 4

Skirt piece 7

Grain of fabric

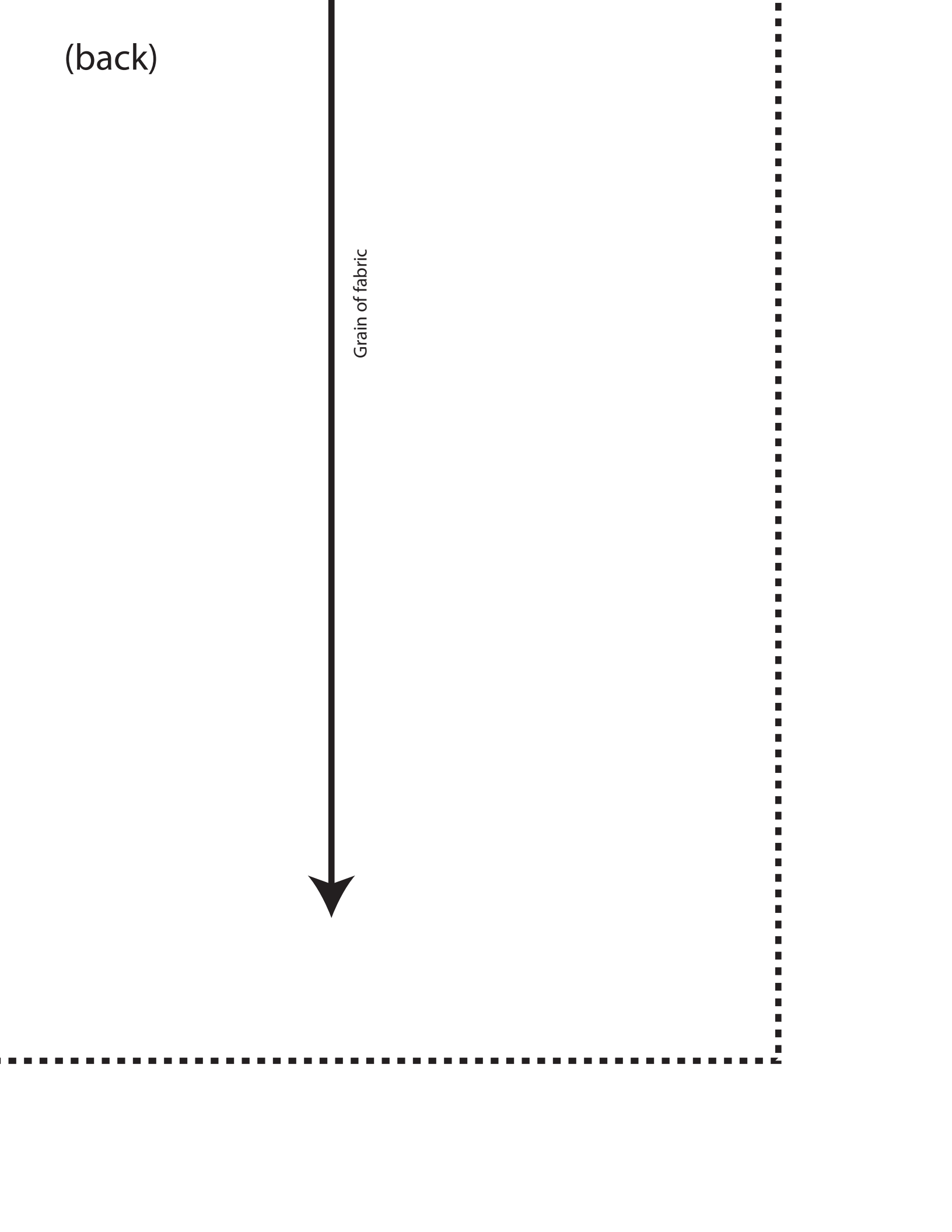
Skirt piece 8



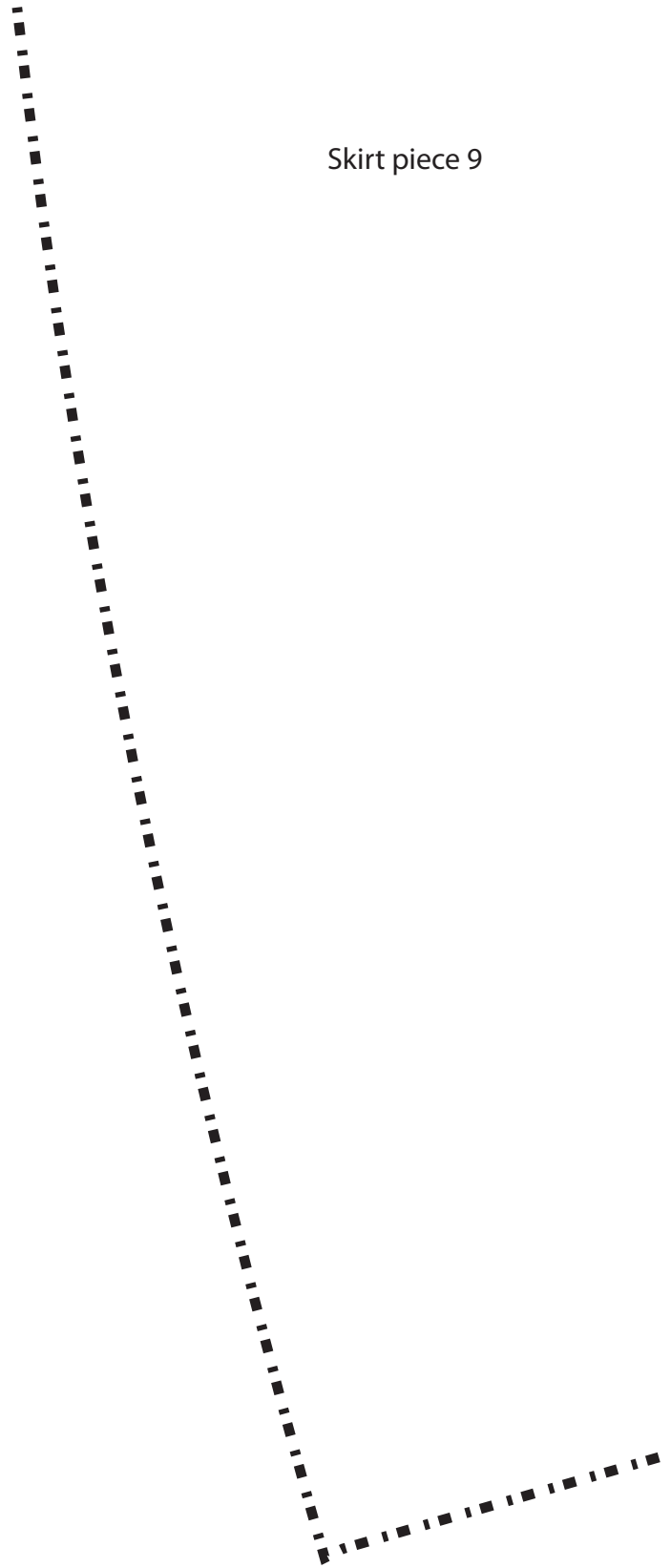
(back)

(back)

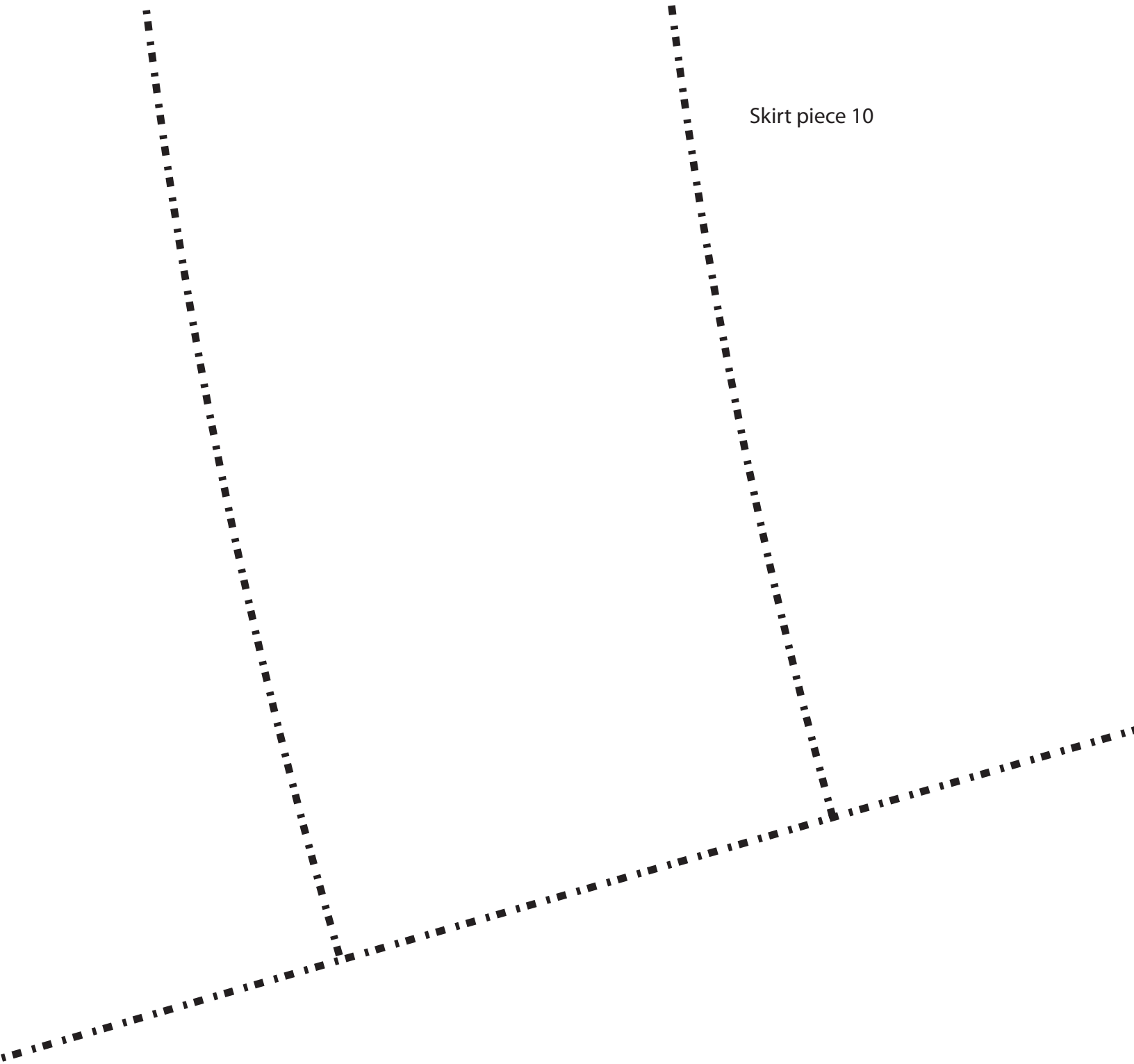
Grain of fabric



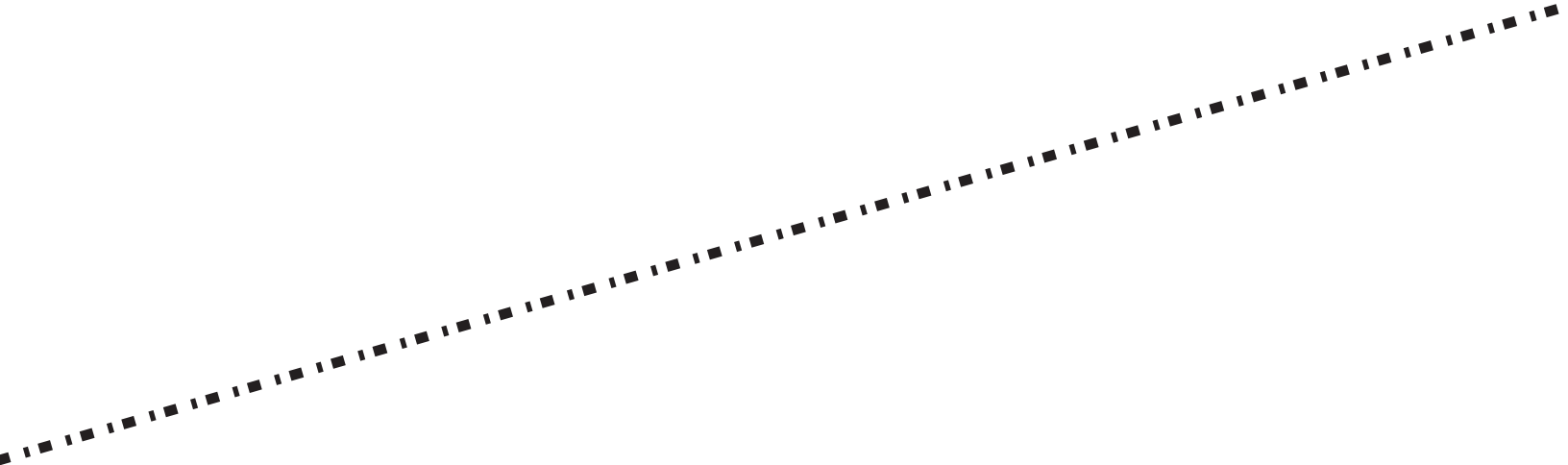
Skirt piece 9



Skirt piece 10



Skirt piece 11



Skirt piece 12

