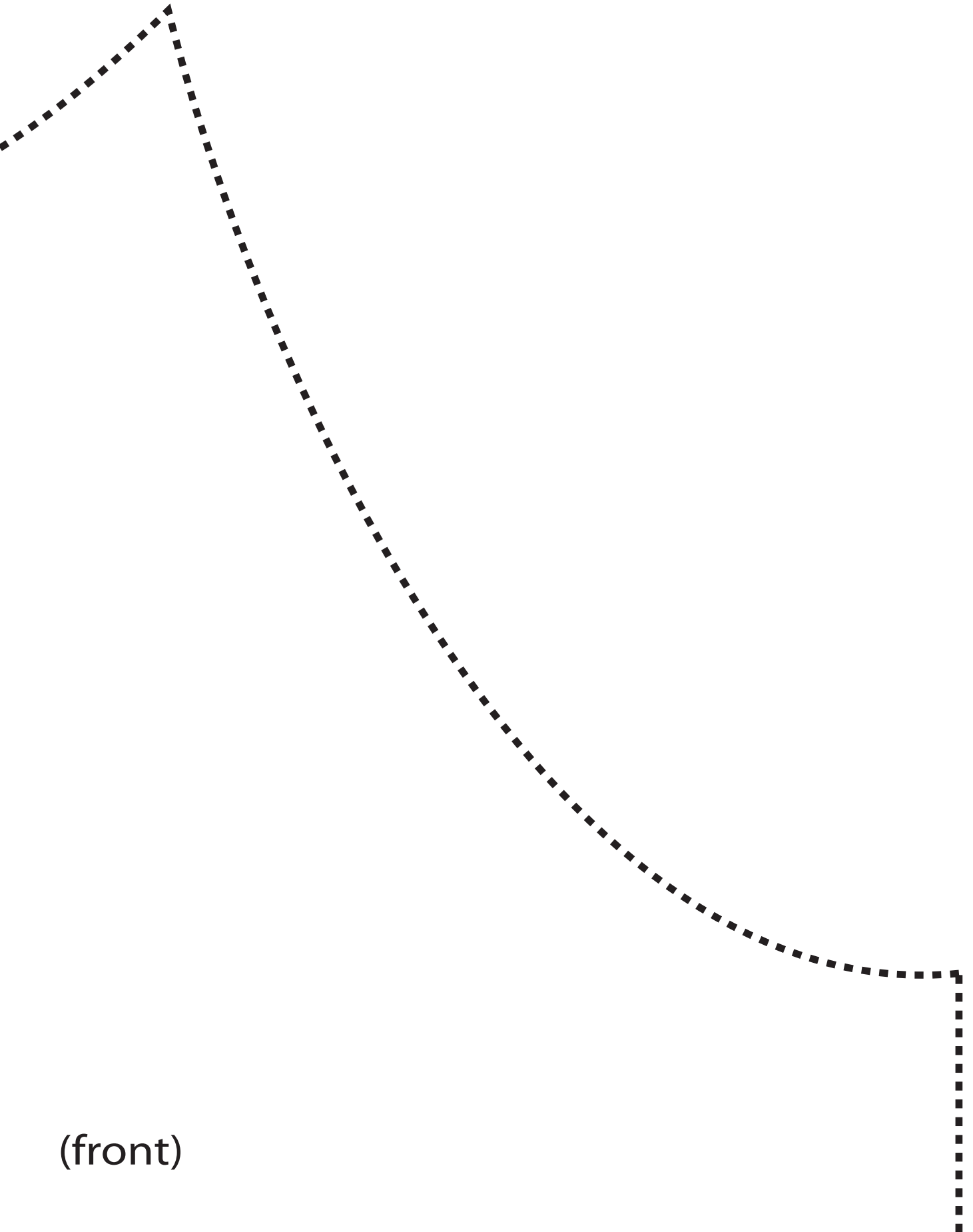


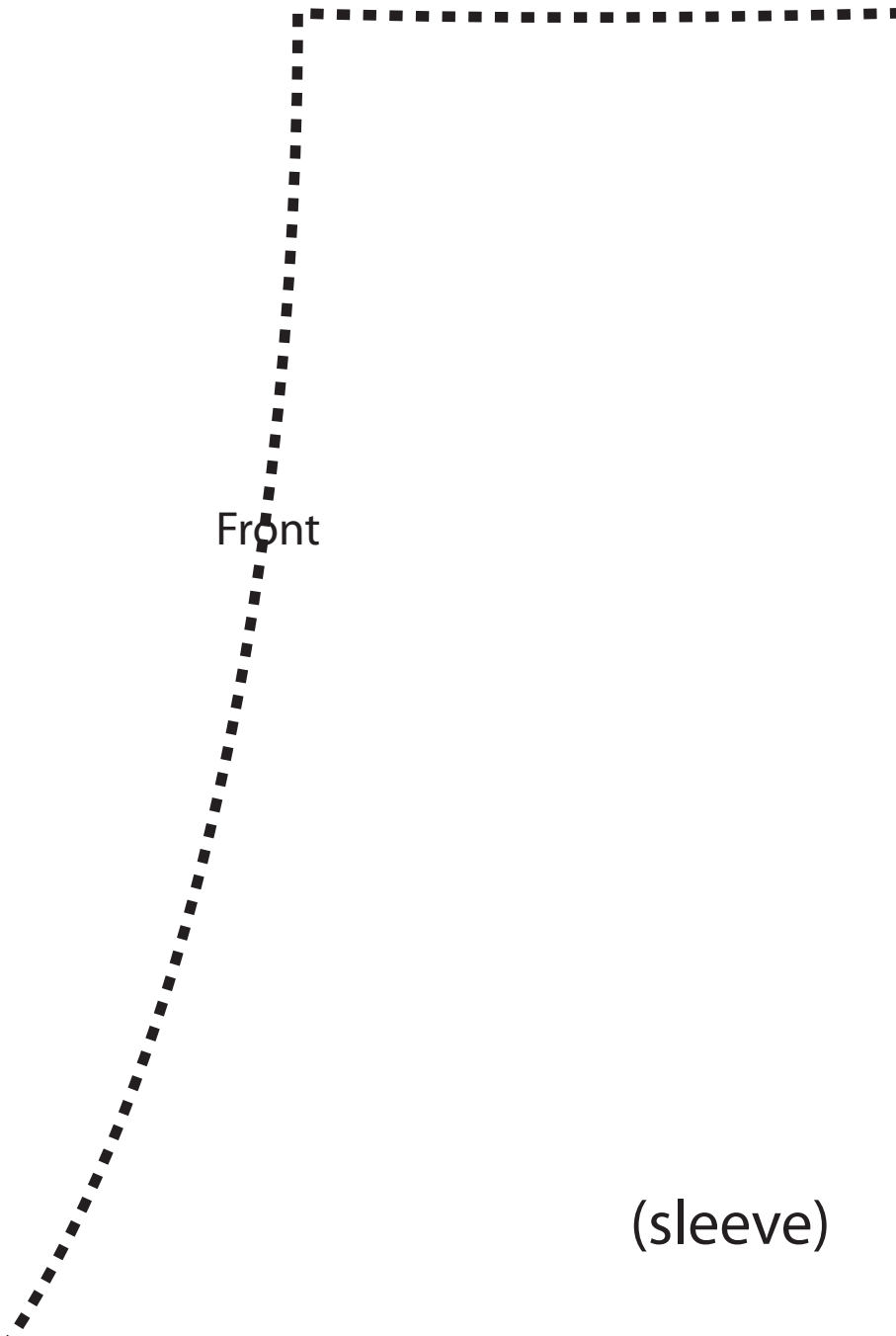
FOLD

Peasant Dress  
Front  
Cut 1 on fold

(front)



(front)



Front

(sleeve)

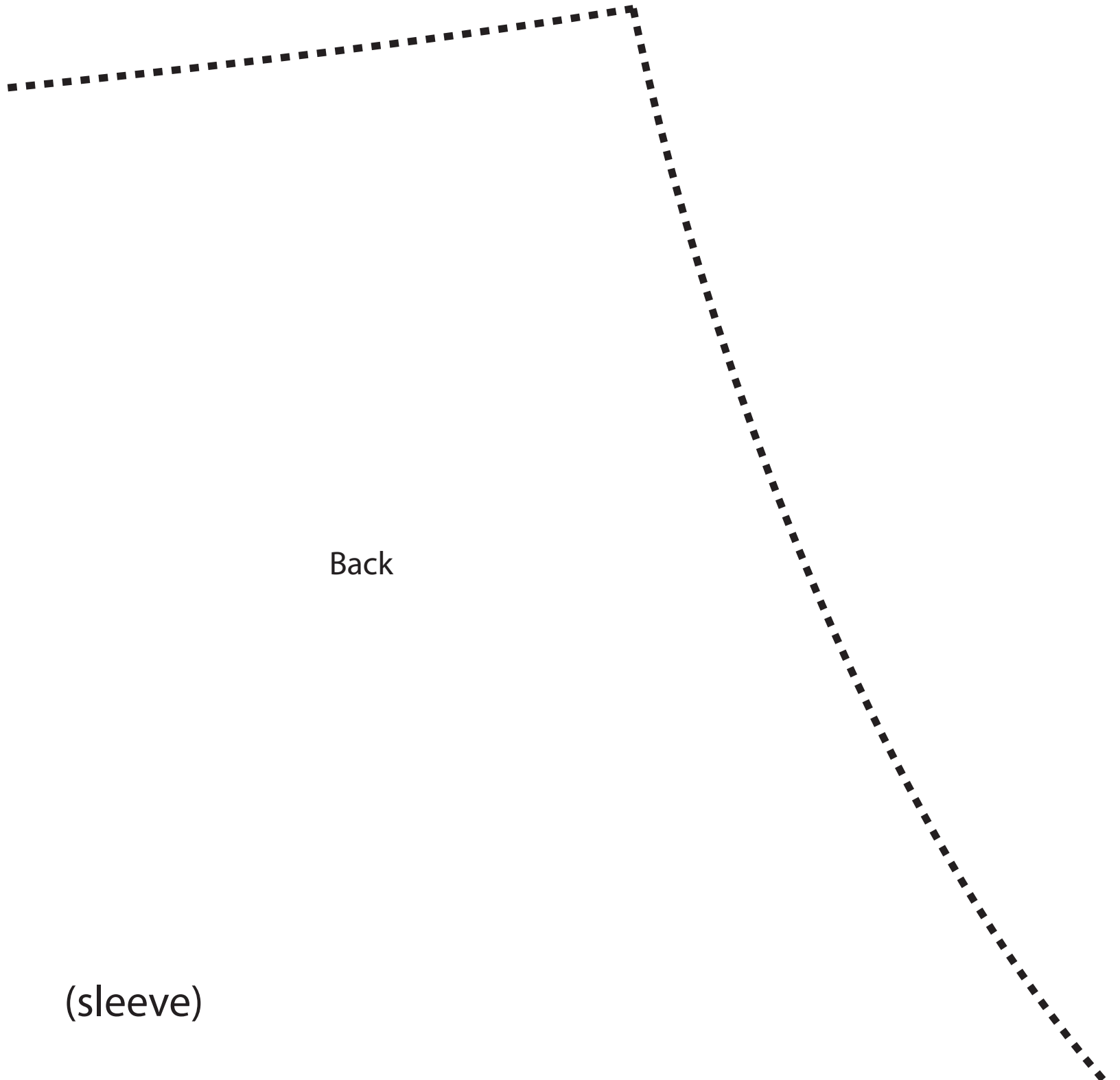


Peasant Dress  
Sleeve  
Cut 2



(sleeve)

(sleeve)



Back

(sleeve)

Peasant Dress pattern size MEDIUM  
from janelwashere.com  
janelwashere@gmail.com

1/2 inch seams allowances throughout

Ruffle piece is cut 12" by 44" (width of fabric)  
Cut four ruffle pieces

Instructions from memory, if you spot a mistake please let me know :-)

Sew sleeves to the front and back pieces, then fold over the top edge neckline into a casing for 1/4" elastic.

Sew two skirt pieces together to form a skirt front and two pieces to form a skirt back.

Sew skirt front to bodice front and skirt back to bodice back. Make either the top or skirt pieces overhang by an inch and a half or so in order to have something to fold over as a casing for the waist elastic. If you forget to do this you'll have to use a separate piece as a casing like I did.

I like to wait with the side seams until last. That way the ruffle gathering is in two flat parts and the sleeve hem can be done flat.

Sew two ruffle pieces together, gather and sew to skirt front, repeat for skirt back.

Make the sleeve elastic casing, just don't sew clear to the edges, leave an inch or two unsewn.

Sew down the entire side starting at the sleeve, under the arms, down the bodice and skirt to the bottom of the ruffle.

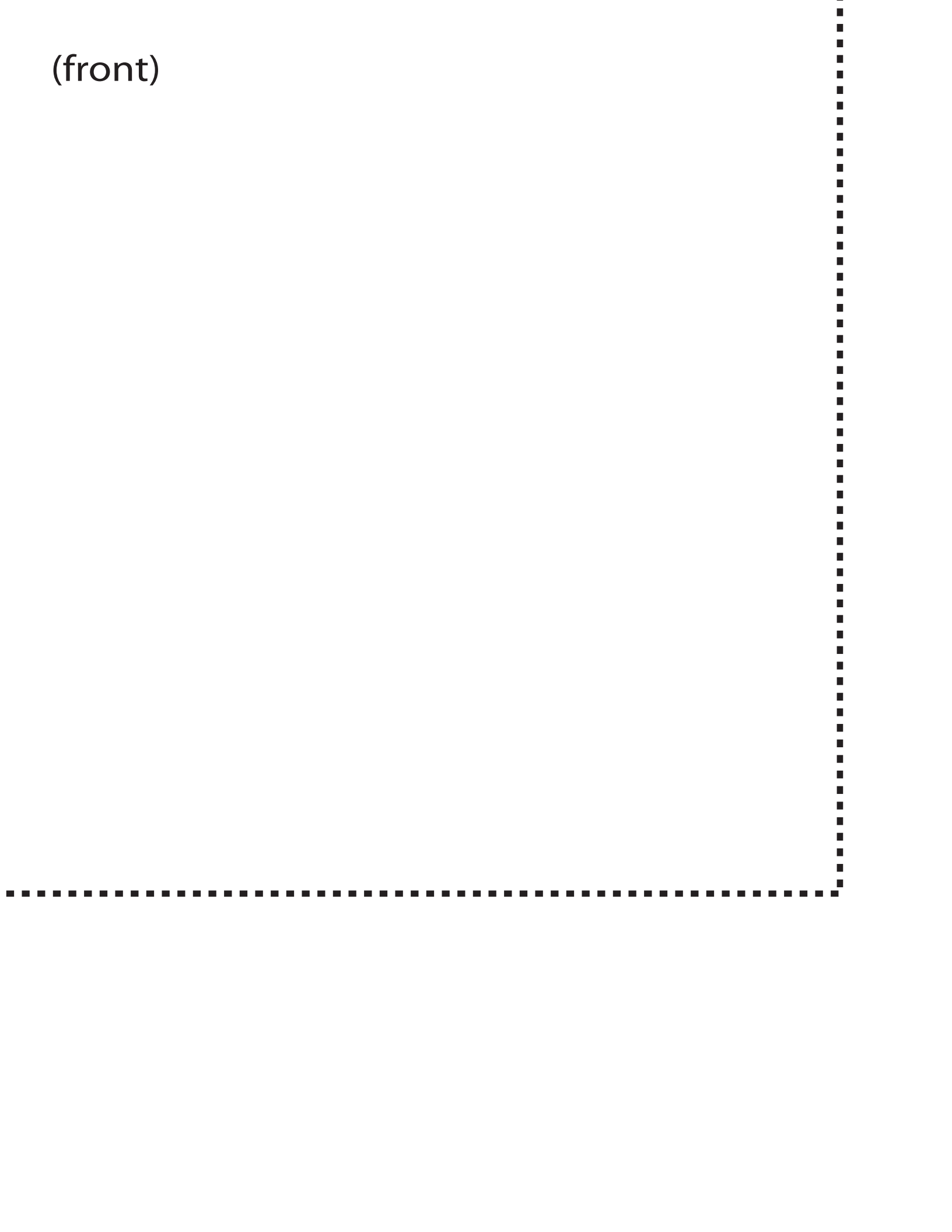
Finish the sleeve casing, hem the ruffle and put in the elastic.

(front)

Grain of fabric

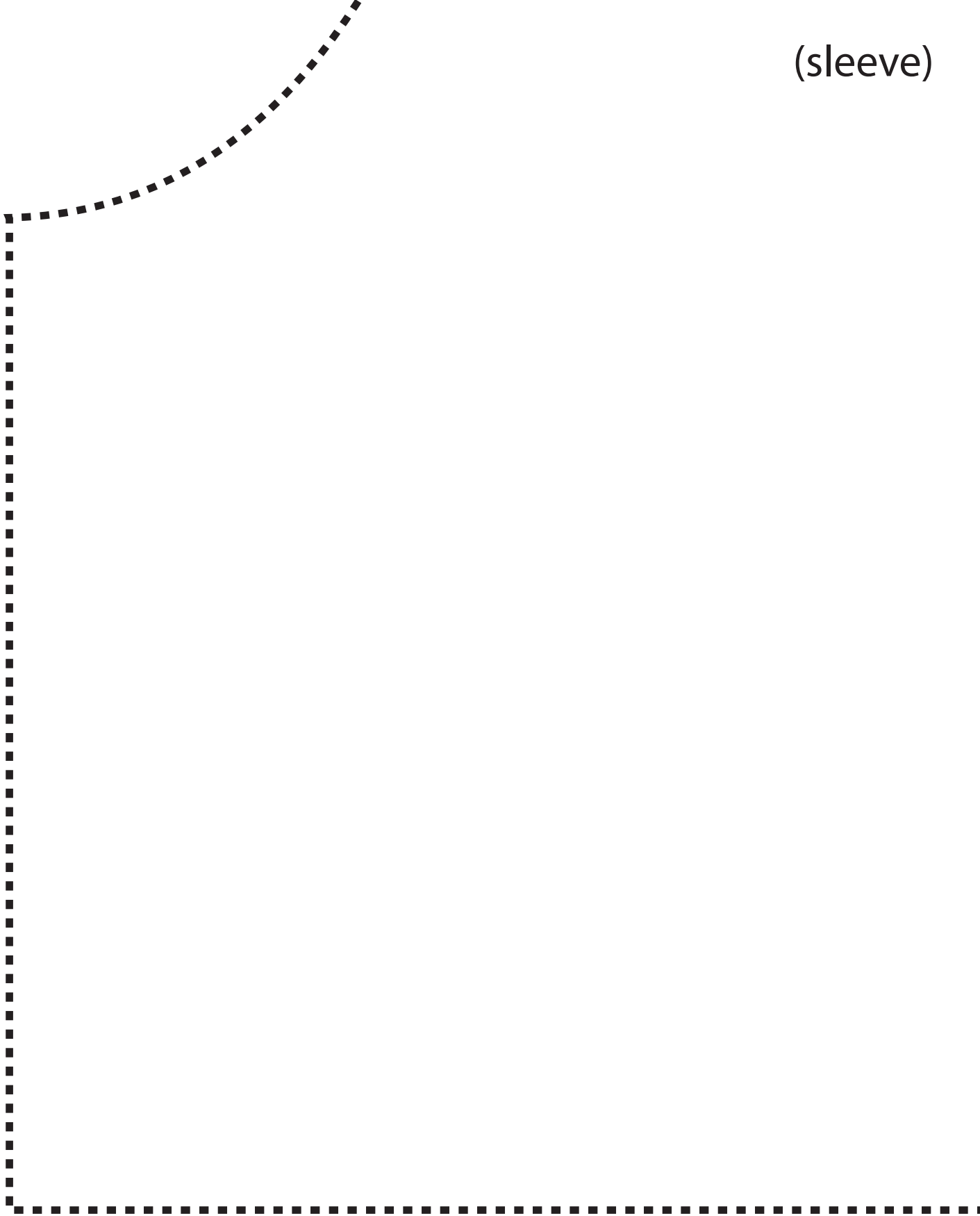


(front)





(sleeve)



(sleeve)

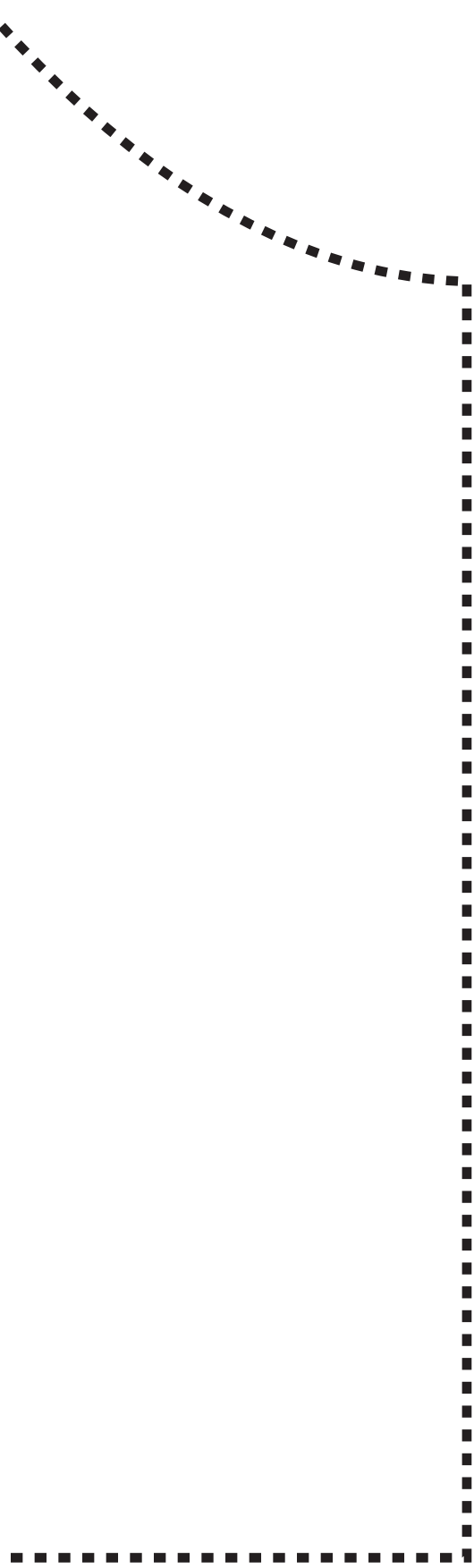
(sleeve)

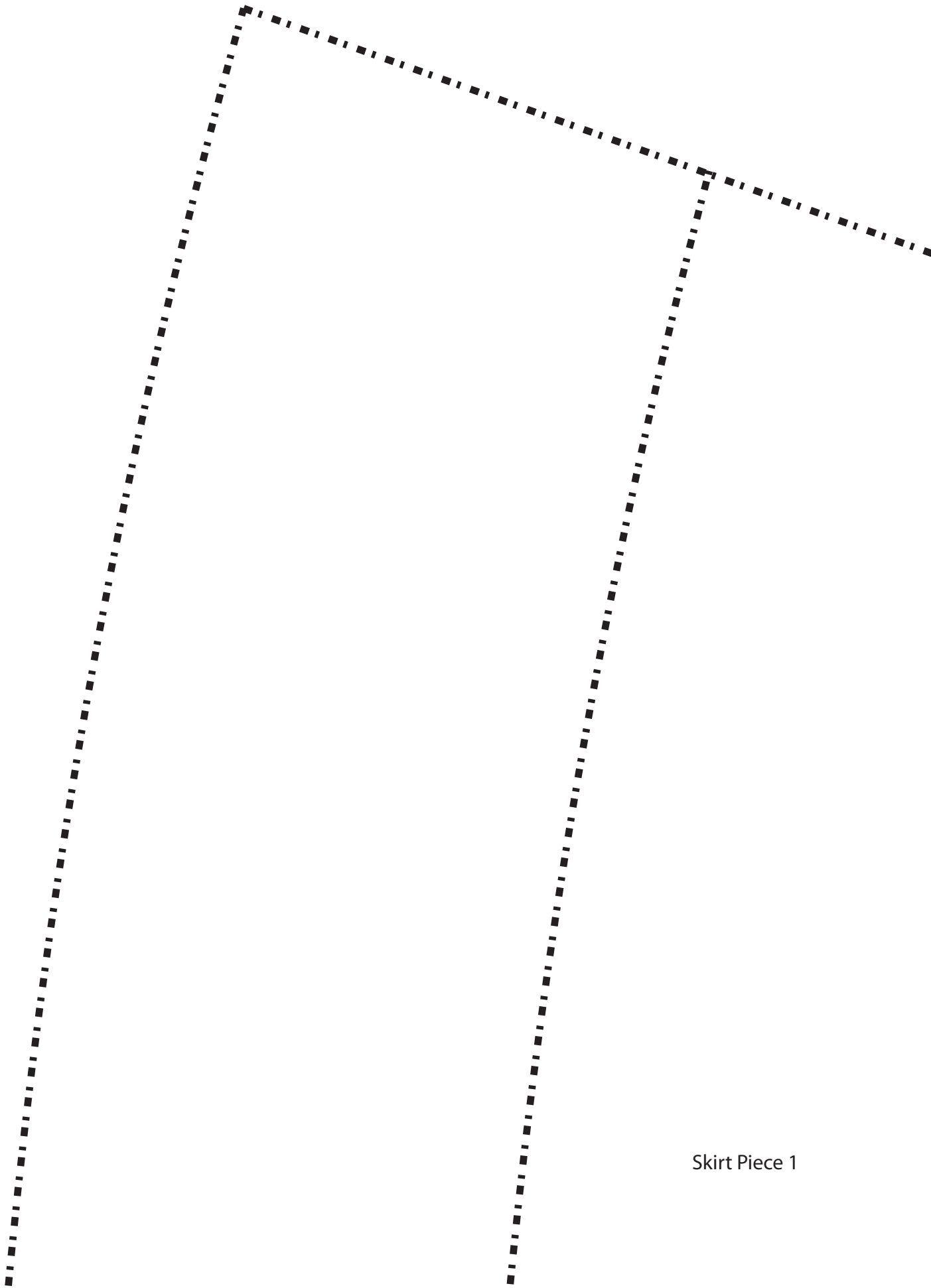
Grain of fabric



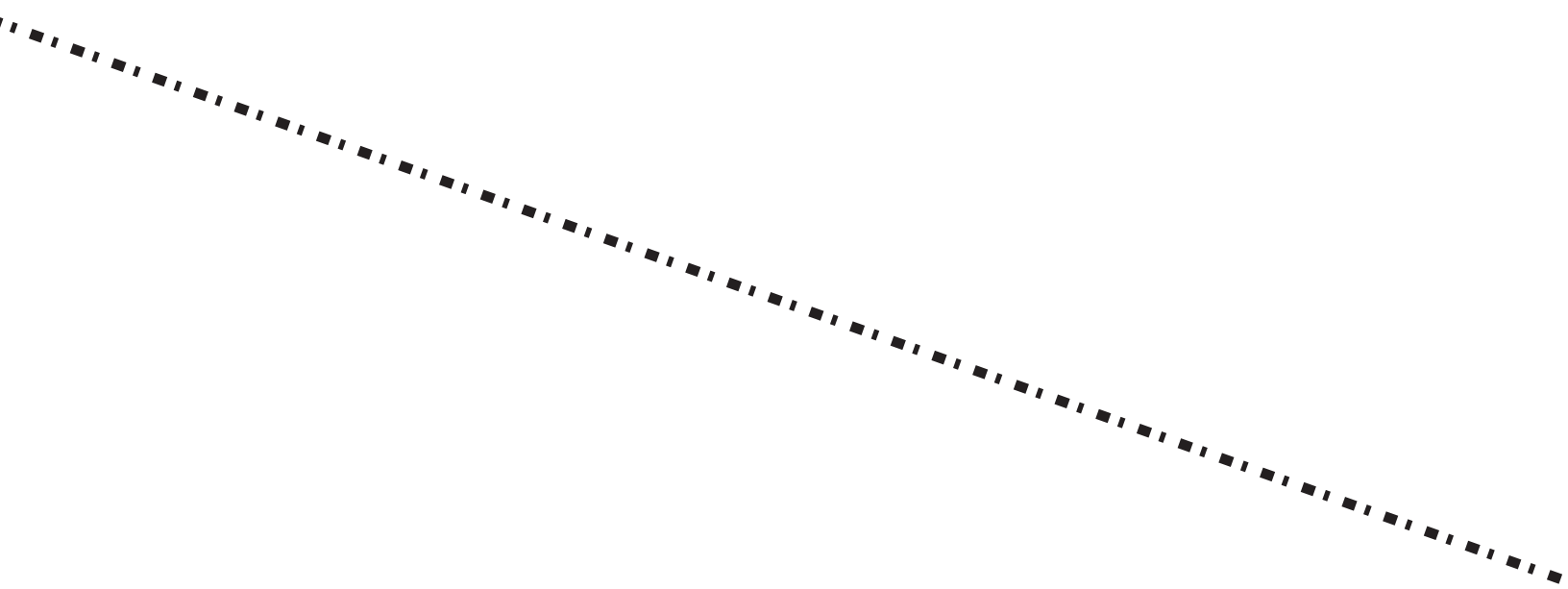
(sleeve)







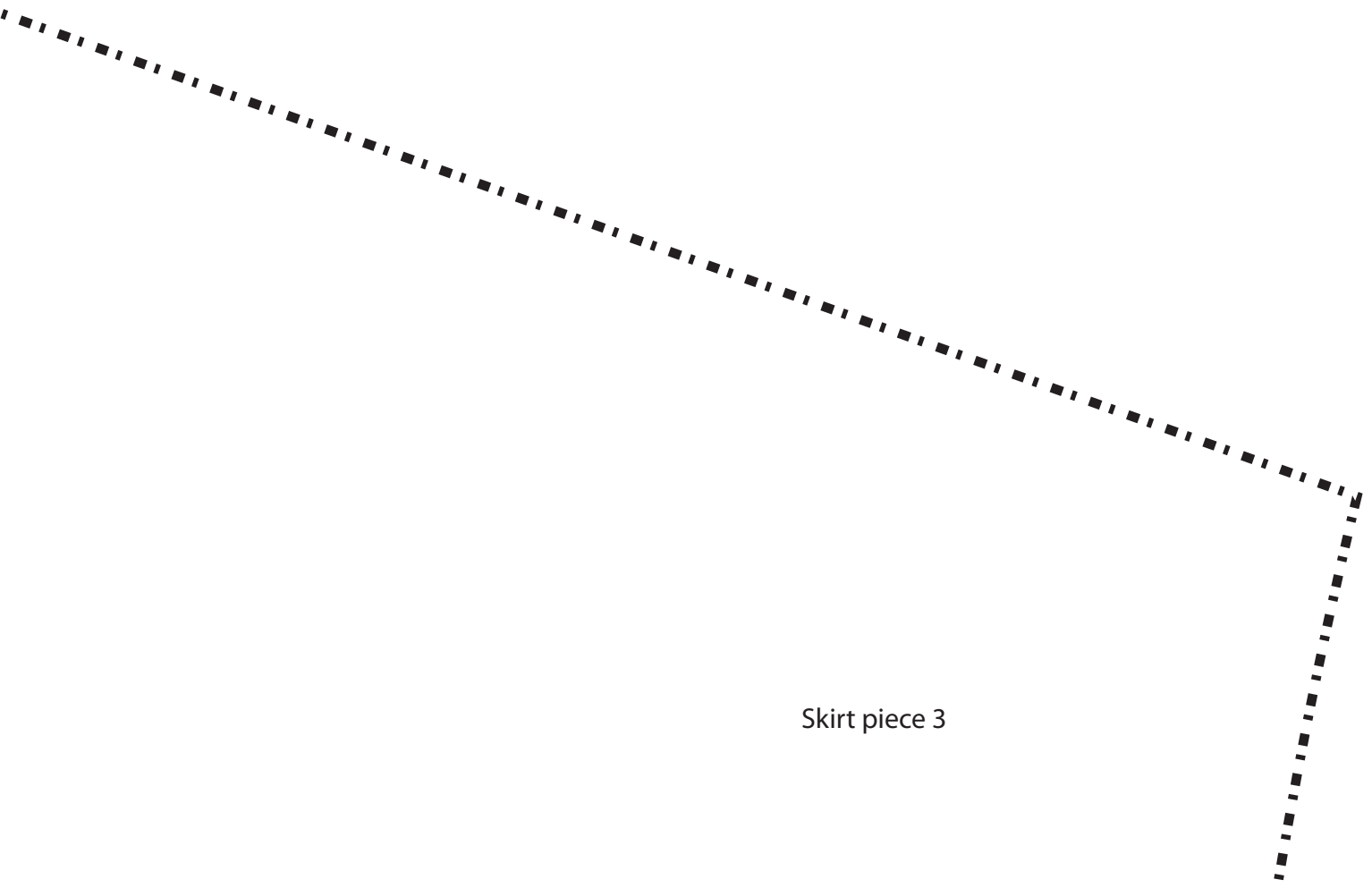
Skirt Piece 1



Skirt piece 2

# NOTE

Make sure the pdf prints at 100% scale! This line should be 4" long

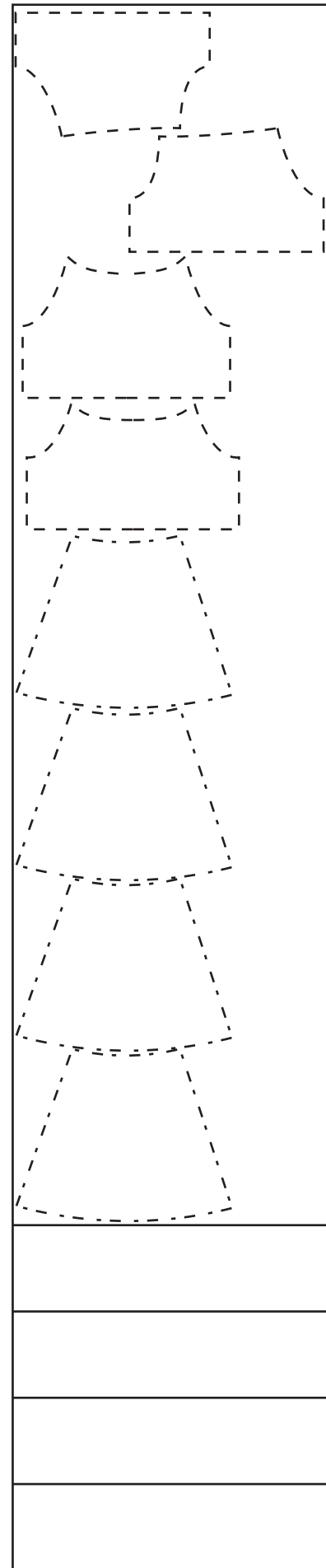
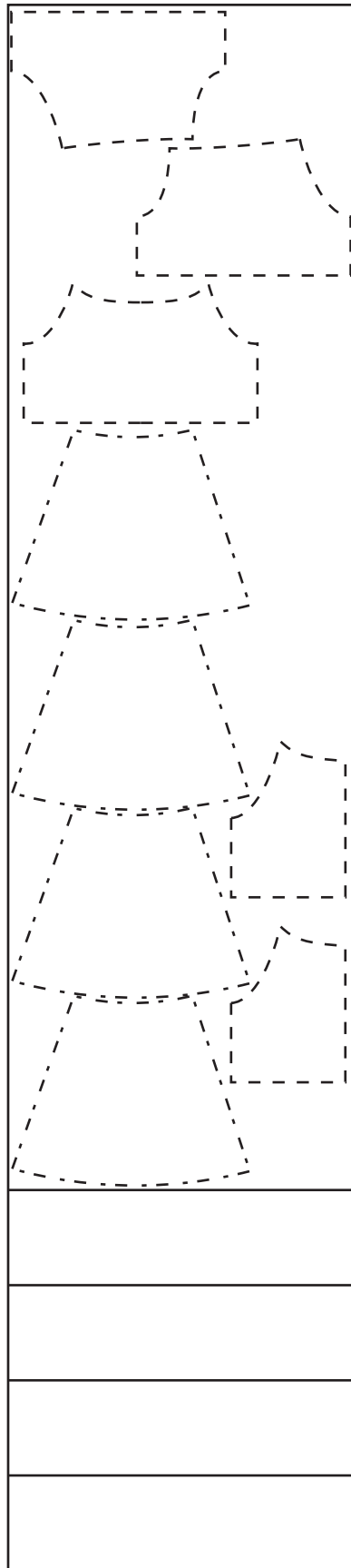


Skirt piece 3

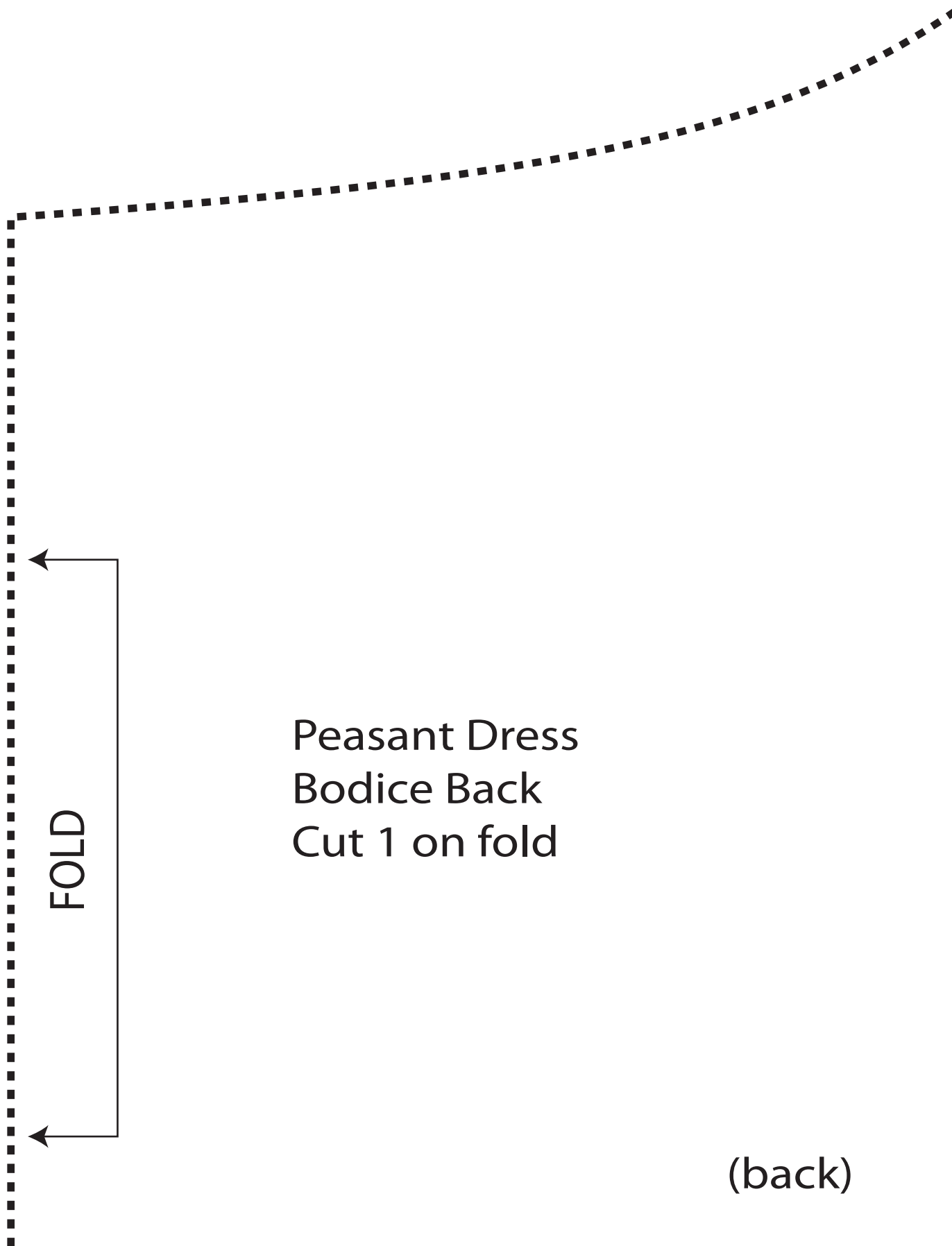
218"  
or 6-1/4 yd

198"  
or 5-1/2 yd

Cutting Layout  
44" wide fabric  
adding a seam in the center  
back (cutting back as two  
pieces instead of on fold)  
saves a lot of fabric.

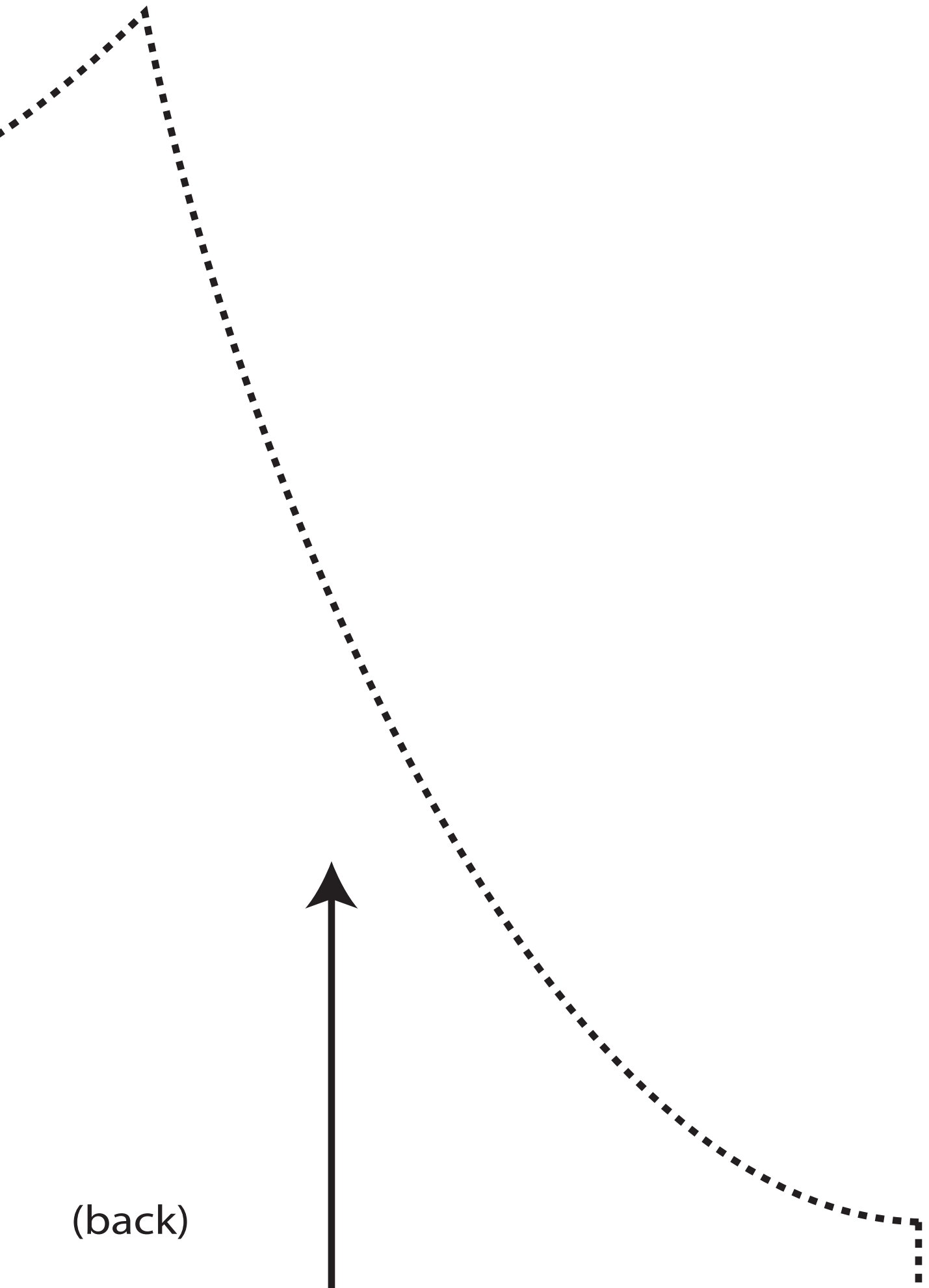






Peasant Dress  
Bodice Back  
Cut 1 on fold

(back)



(back)

Skirt piece 4



# Peasant Dress Skirt Cut 4

Skirt piece 5

---

Grain of fabric

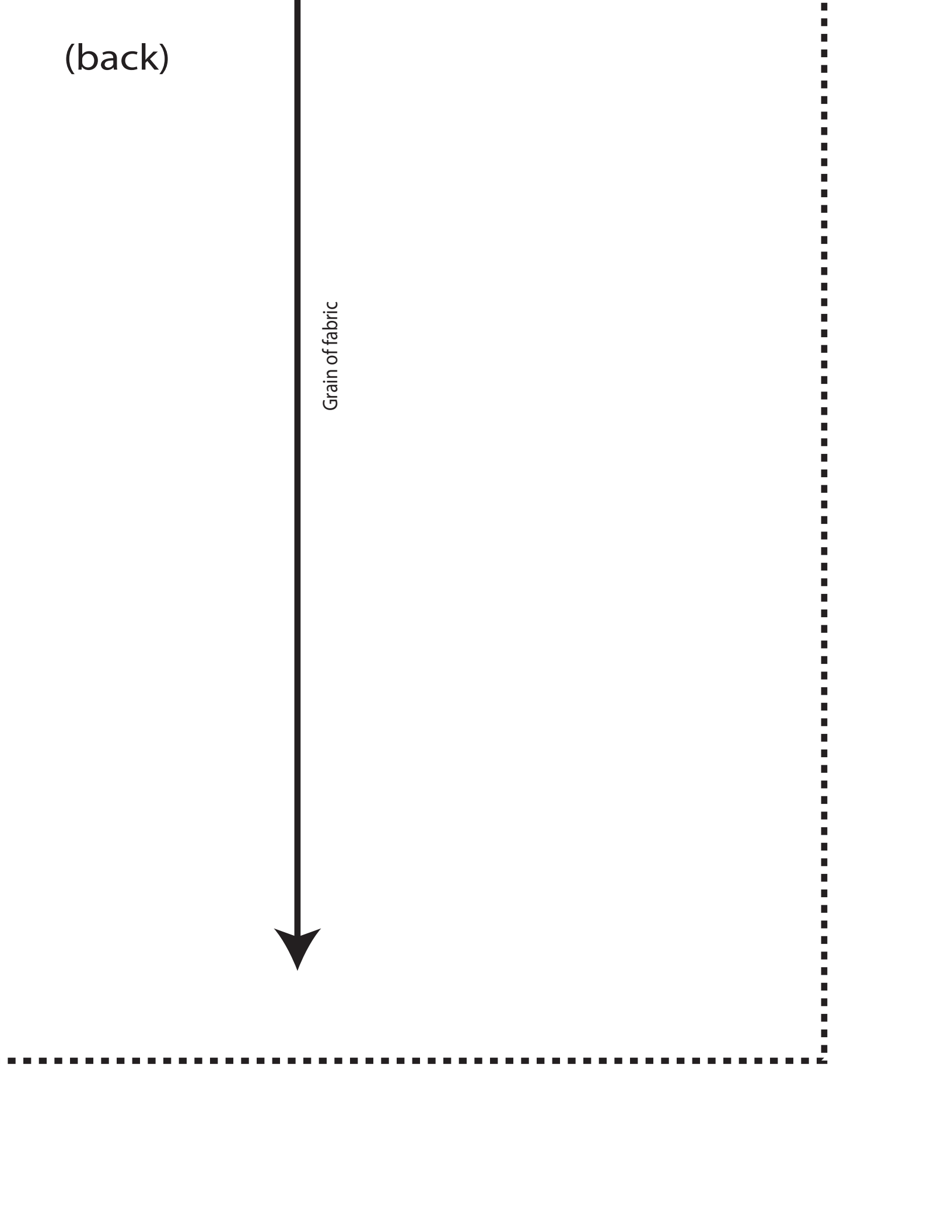
Skirt piece 6

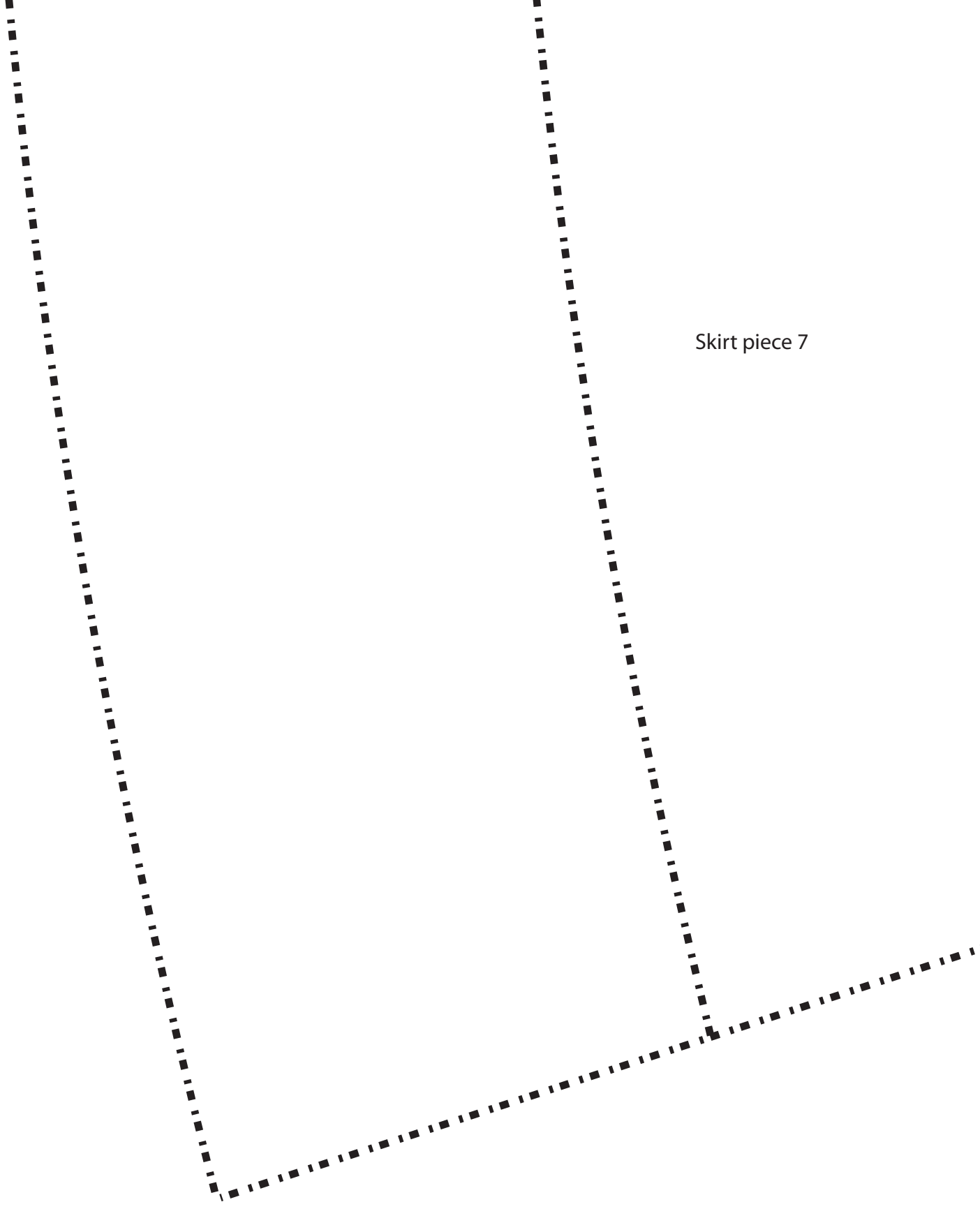


(back)

(back)

Grain of fabric

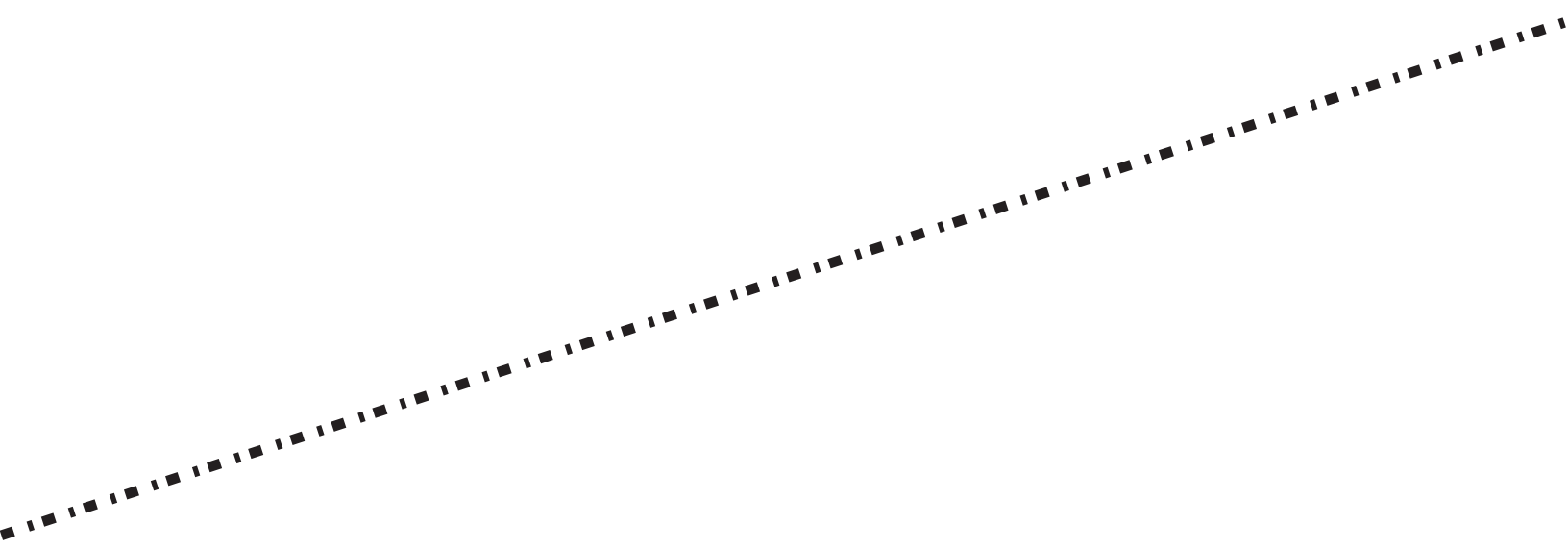


A dashed black line pattern on a white background, forming a large, irregular shape that resembles a wide, shallow V or a skirt piece. The shape is defined by two long, slightly curved lines that meet at a point near the bottom center, and a shorter, slightly curved line that connects the two long lines near the top right. The lines are composed of small, evenly spaced dashes.

Skirt piece 7



Skirt piece 8



Skirt piece 9

