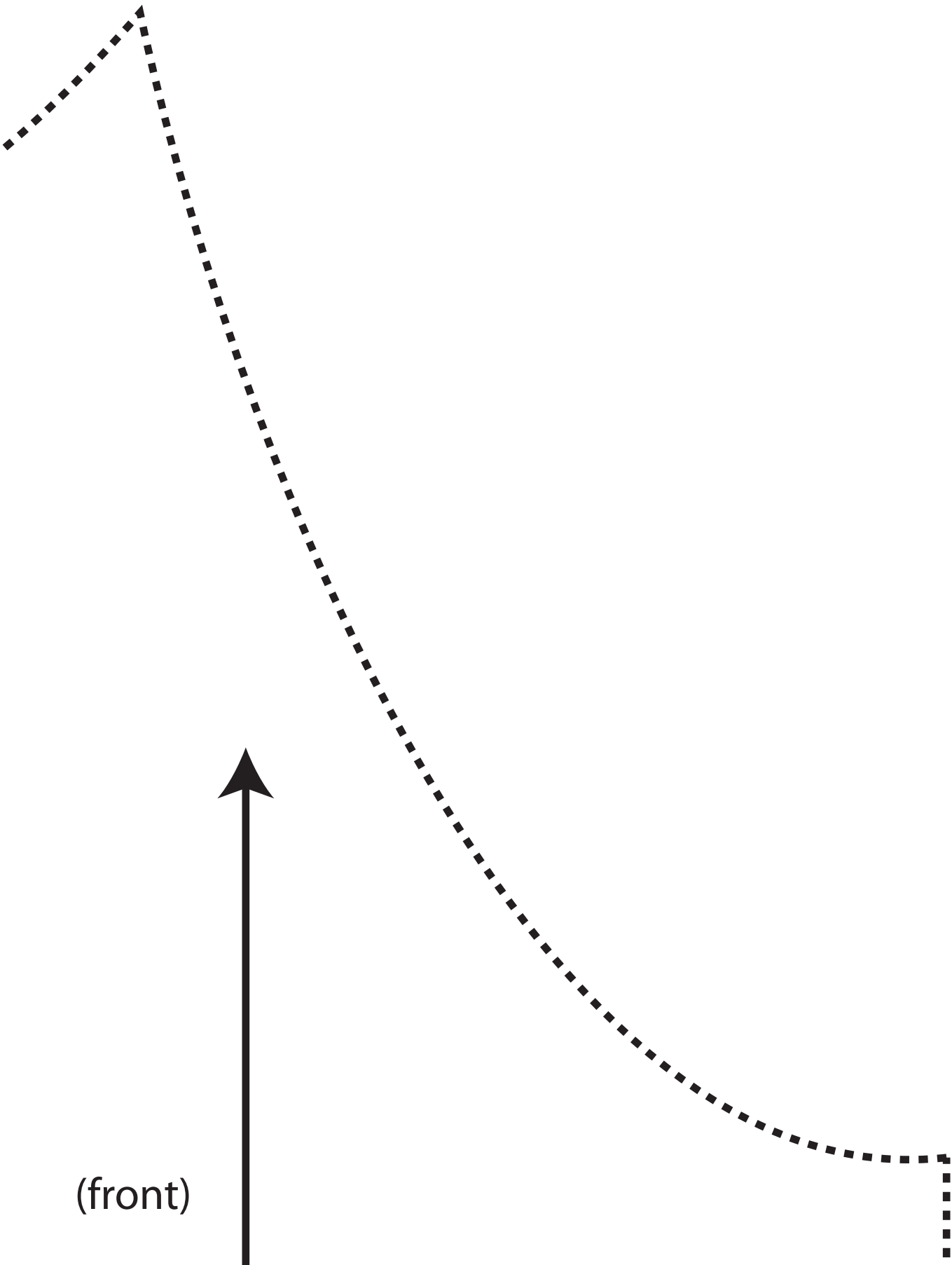
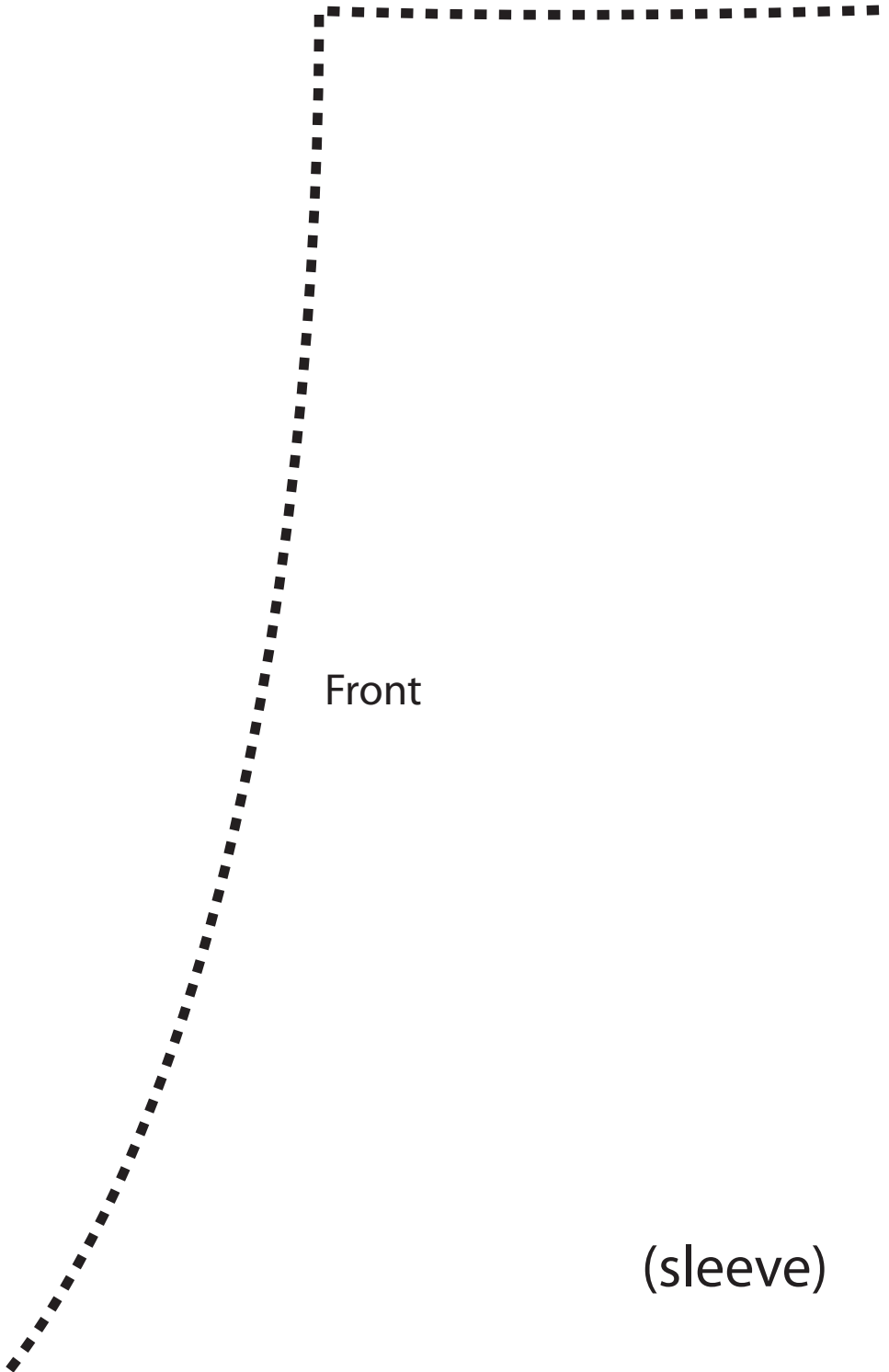

Make sure the pdf prints
at 100% scale! This line
should be 4" long

size XL for 42" bust

Peasant Dress
Front
Cut 1 on fold

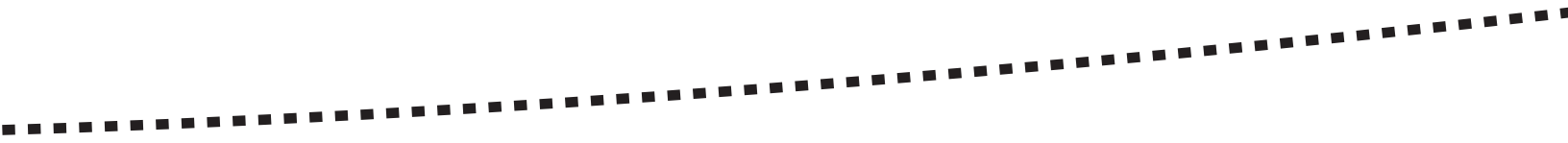
(front)





Front

(sleeve)

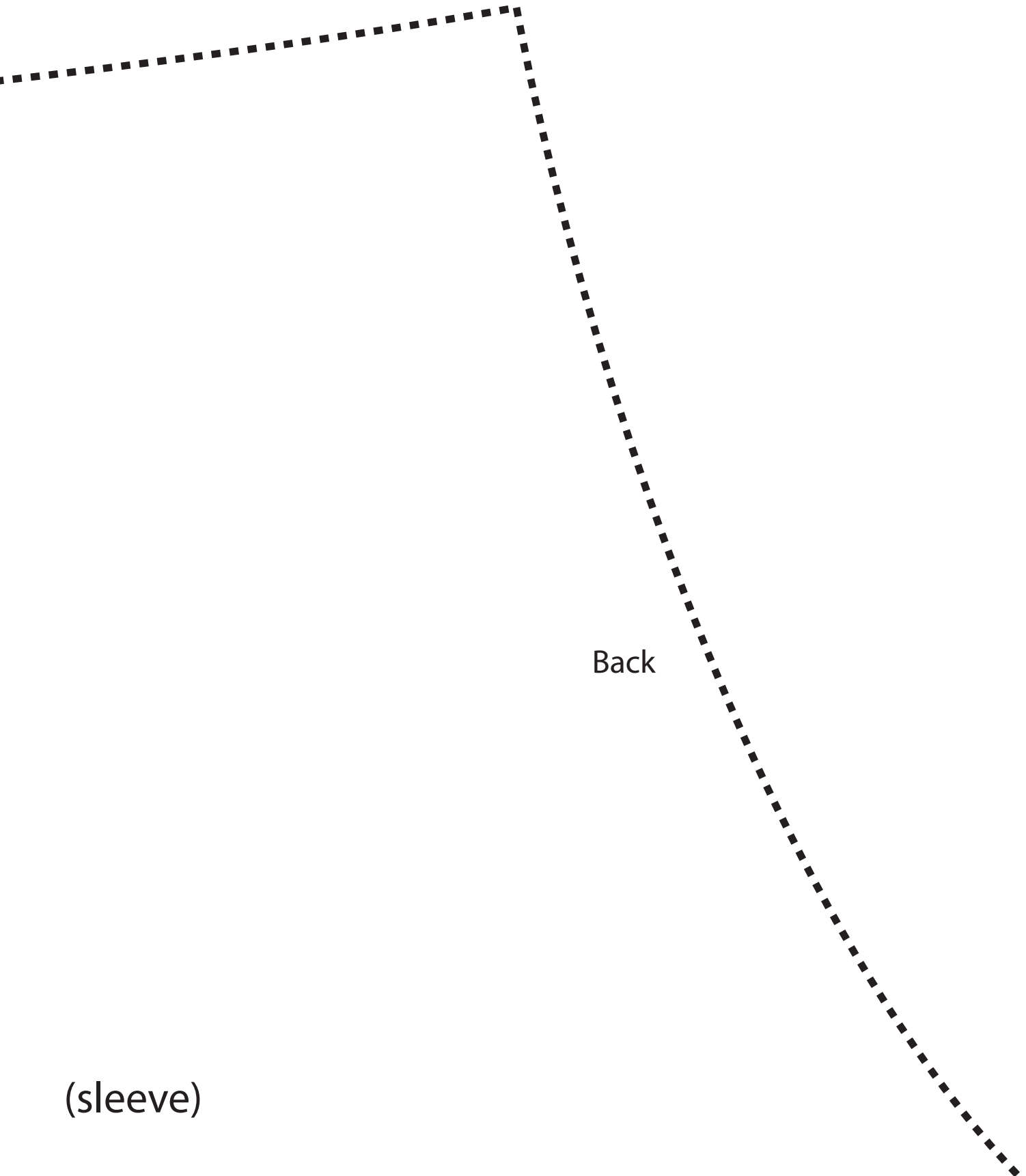


Peasant Dress
Sleeve
Cut 2



(sleeve)

(sleeve)



Back

(sleeve)

Peasant Dress pattern size for 42" bust, regular height
from janelwashere.com
janelwashere@gmail.com

Half-inch seams allowed

Ruffle piece is cut 12" by 44" (width of fabric)
Cut four of ruffle pieces

Instructions from memory, if you spot a mistake please let me know :-)

Sew sleeves to the front and back pieces, then fold over the top edge neckline into a casing for 1/4" elastic.

Sew two skirt pieces together to form a skirt front and two pieces to form a skirt back.

I like to wait with the side seams until last. That way the ruffle gathering is in two flat parts and the sleeve hem can be done flat.

Sew skirt front to bodice front and skirt back to bodice back. Either make the top overhang by an inch or so in order to fold over as a casing for the waist elastic, or use a separate strip of fabric to form the casing.

Sew two ruffle pieces together, gather and sew to skirt front, and repeat for skirt back.

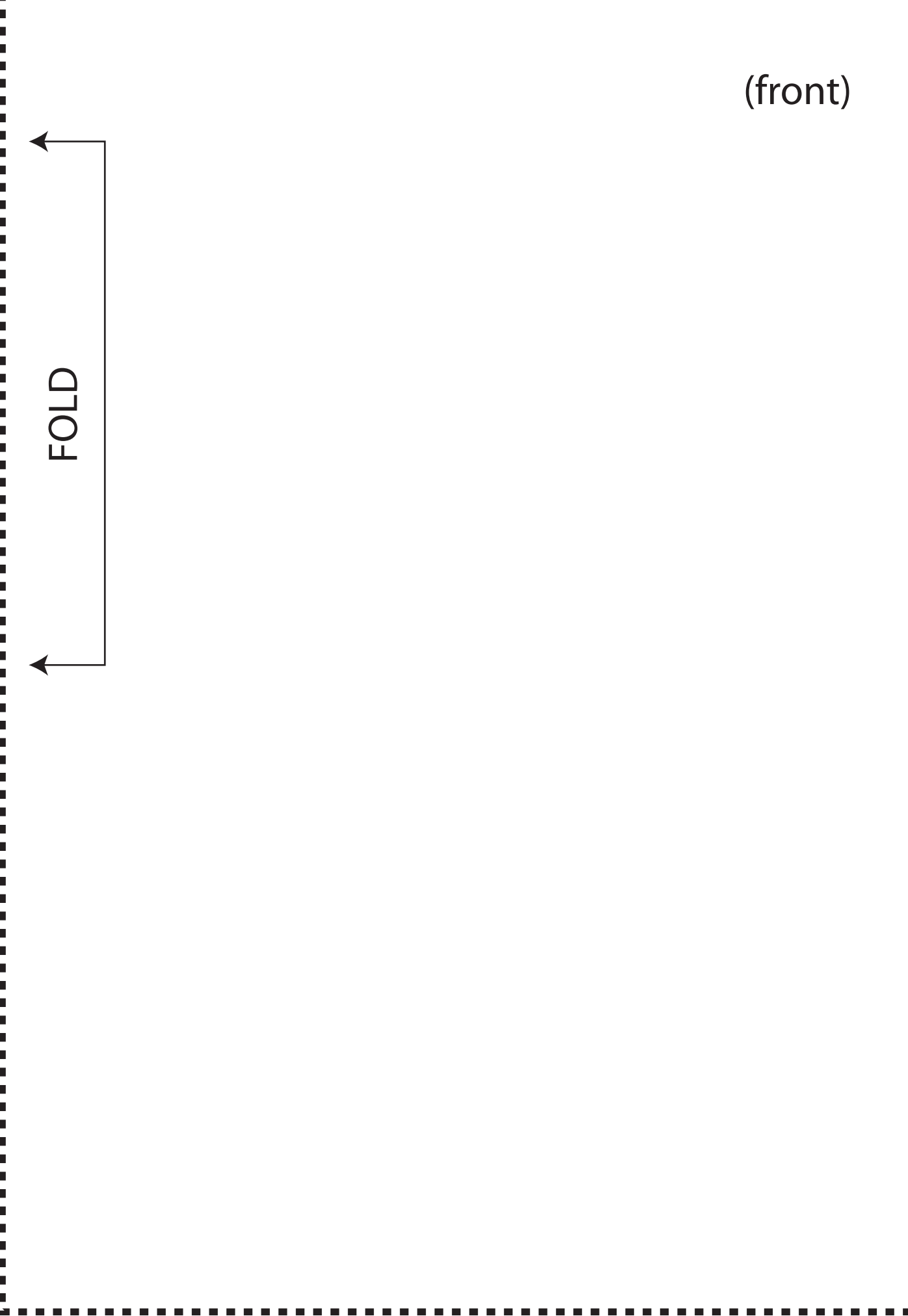
Make the sleeve elastic casing and stitch the center of it, just don't sew clear to the edges, leave an inch or two unsewn.

Sew down the entire side starting at the sleeve, under the arms, down the bodice and skirt to the bottom of the ruffle.

Finish the sleeve casing and put in the elastic.

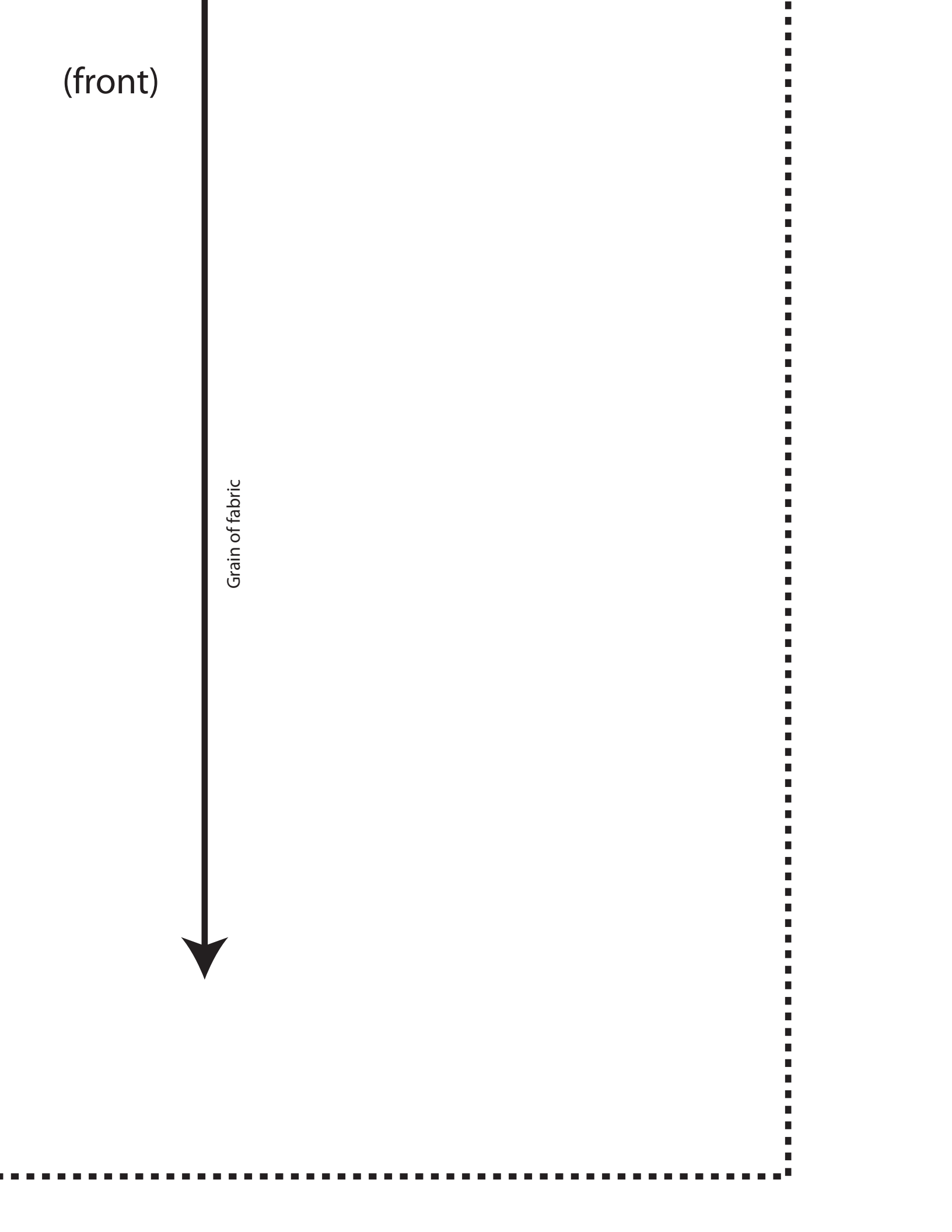
Hem the ruffle.

(front)

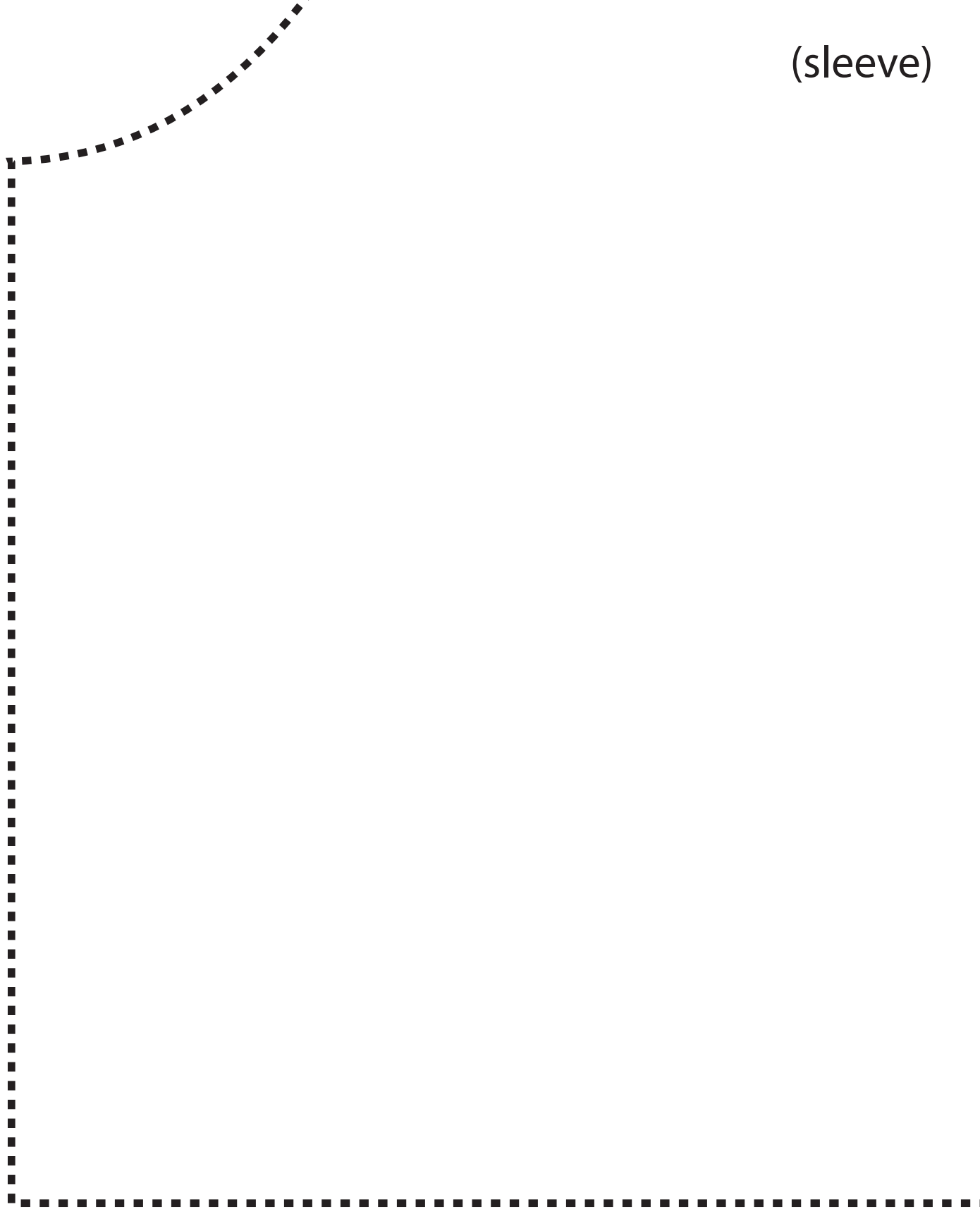


(front)

Grain of fabric



(sleeve)



(sleeve)

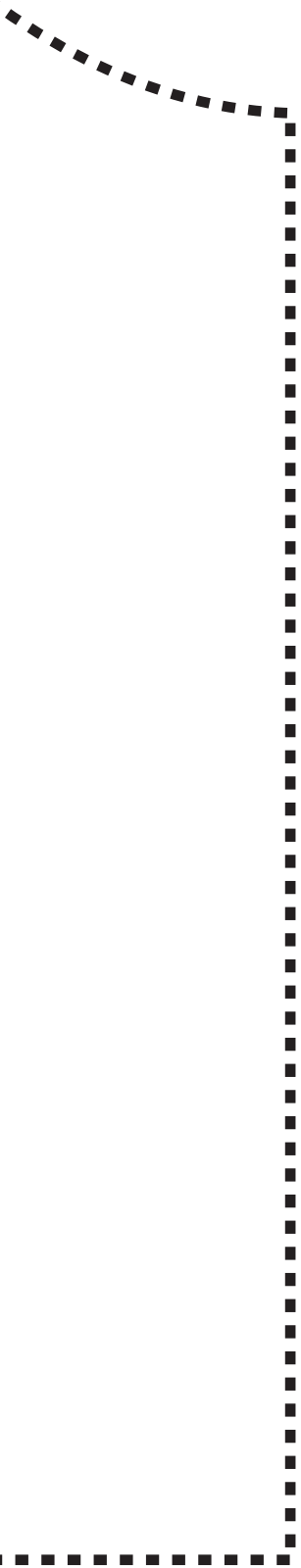
(sleeve)

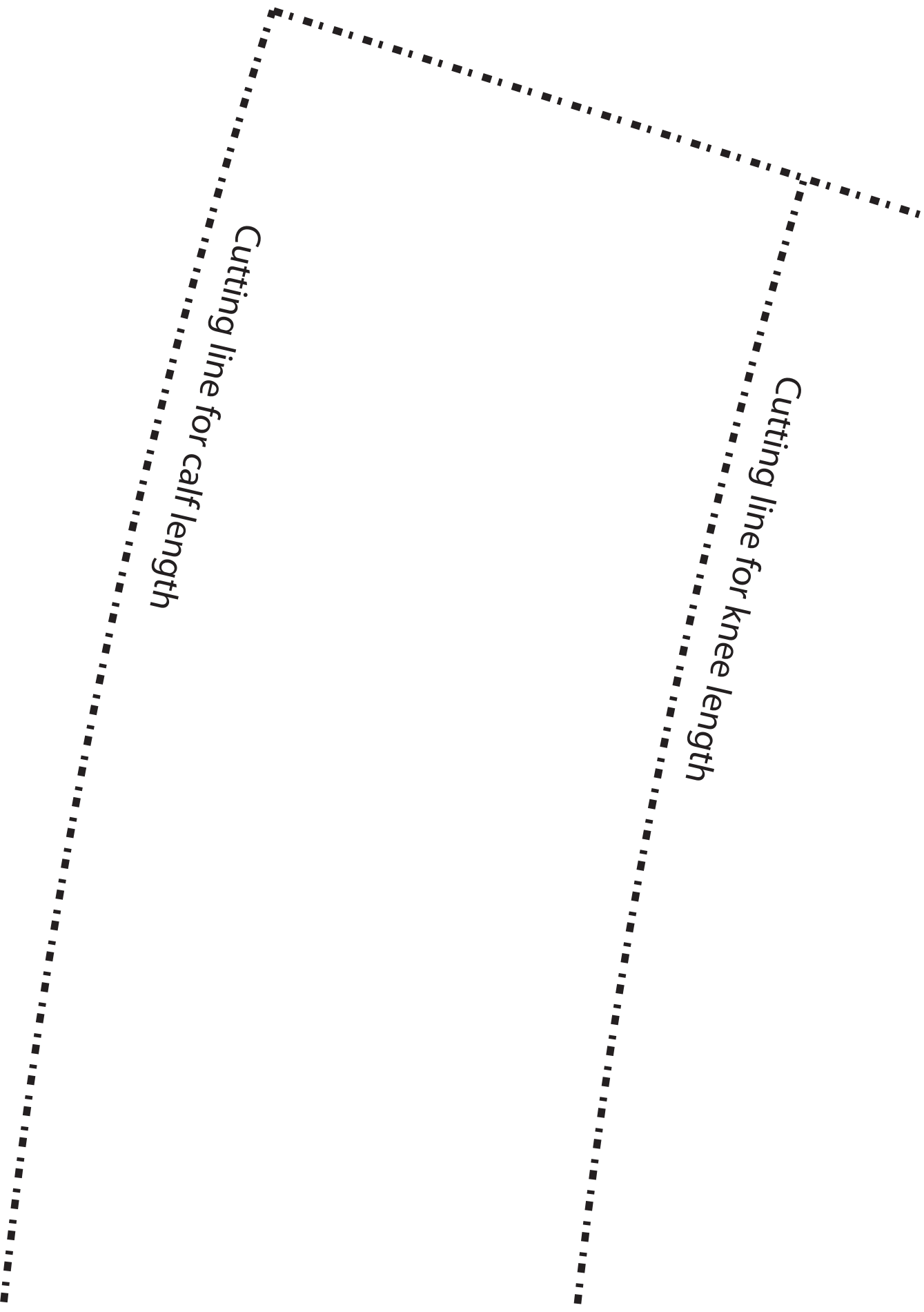
Grain of fabric



(sleeve)

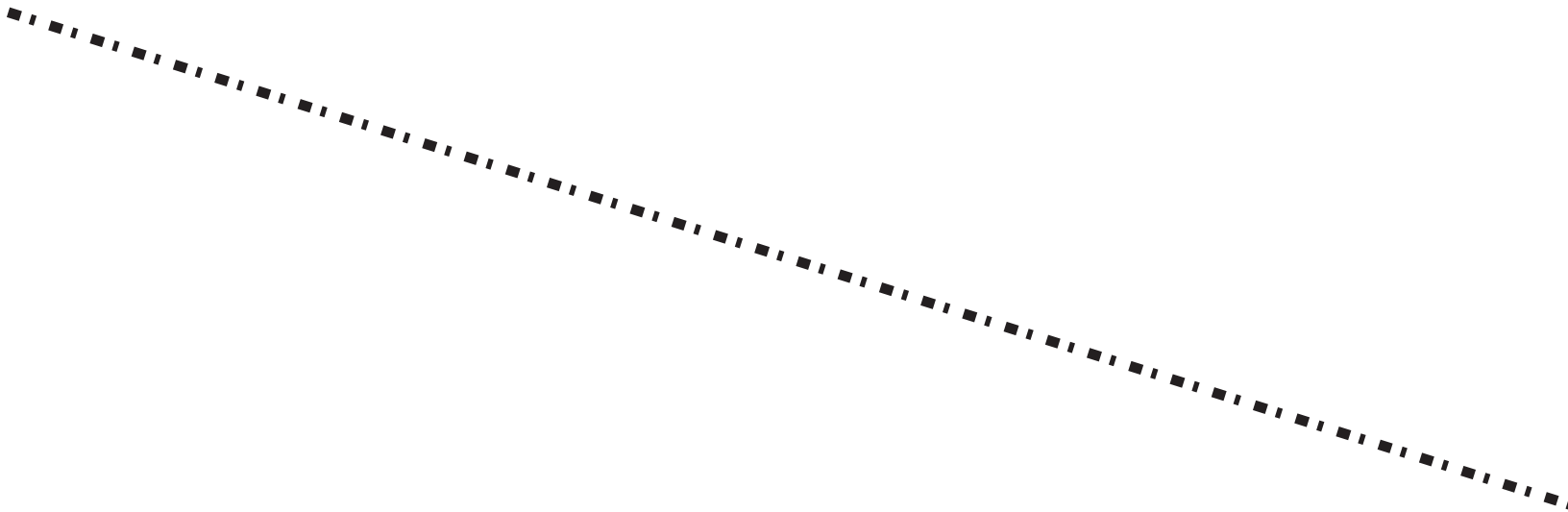


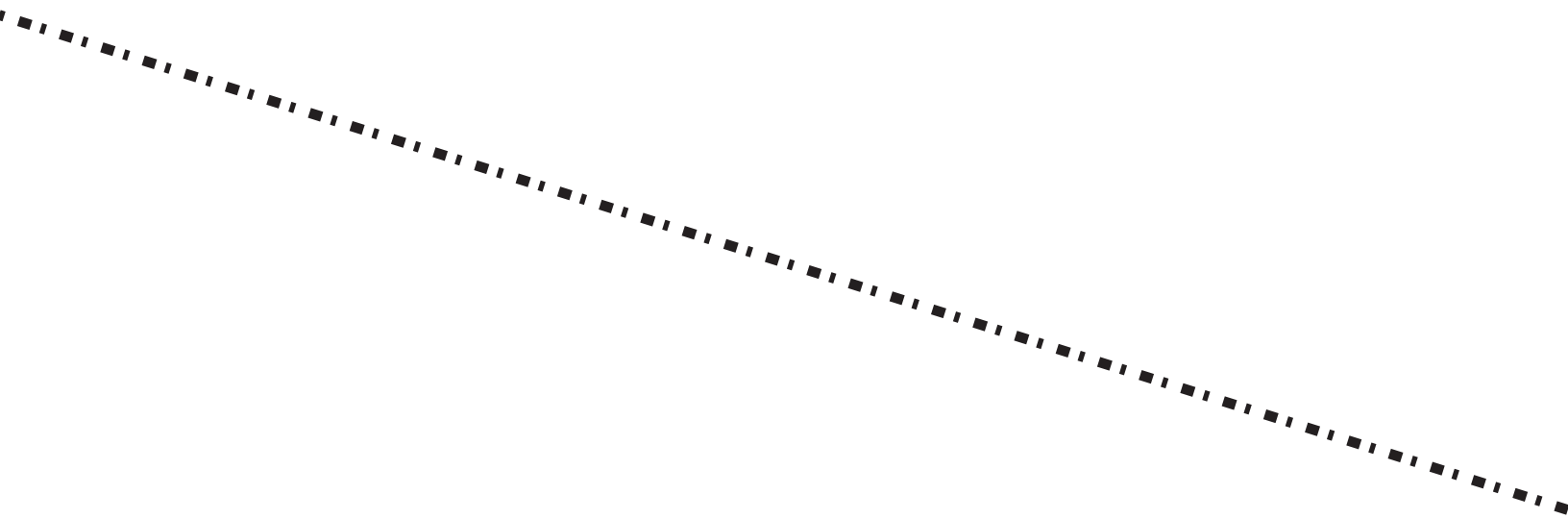


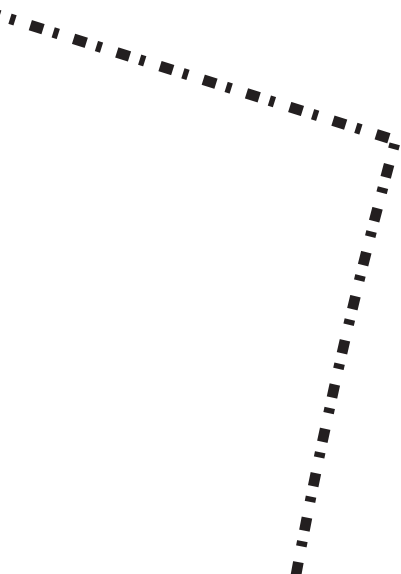


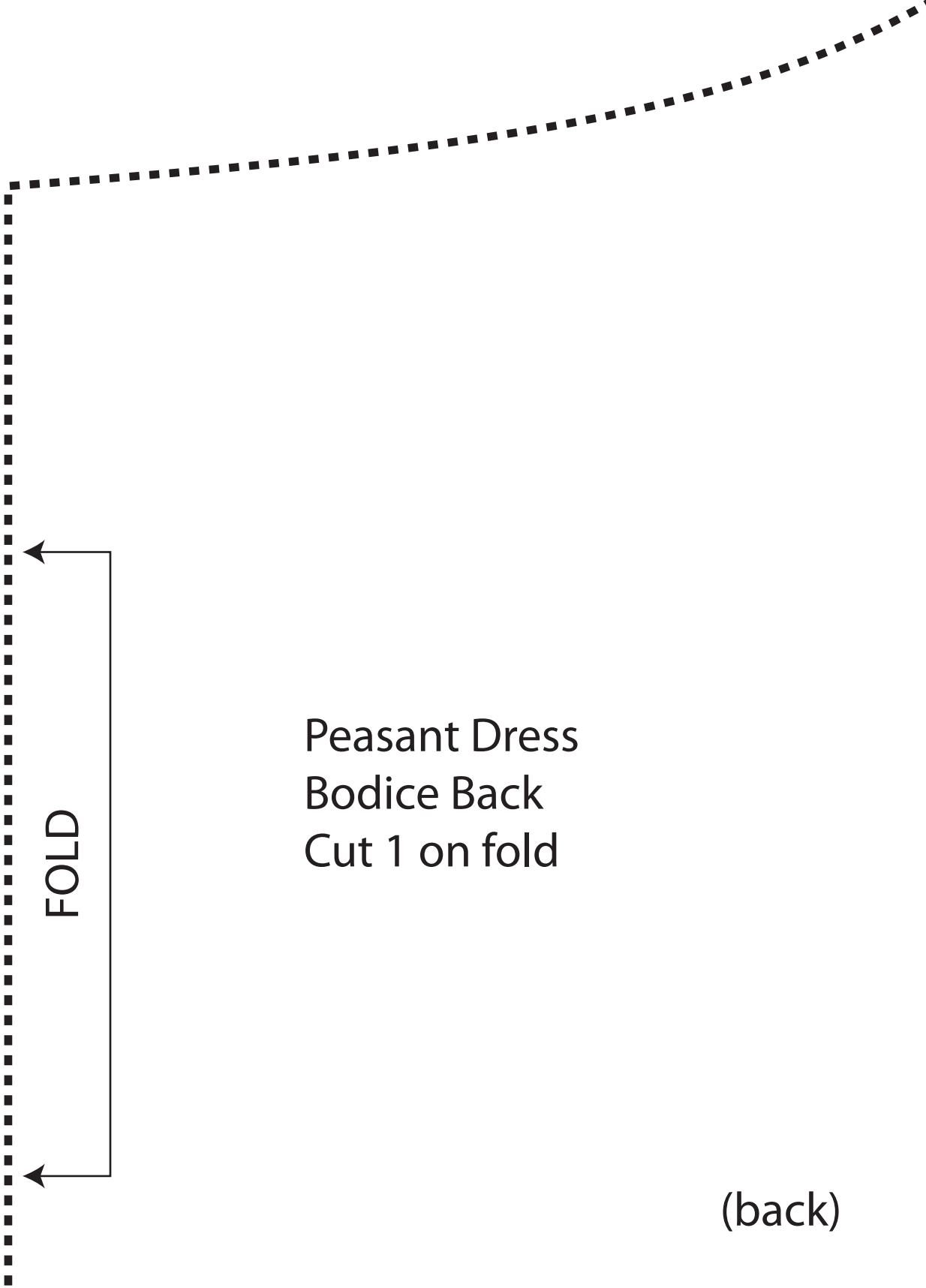
Cutting line for calf length

Cutting line for knee length





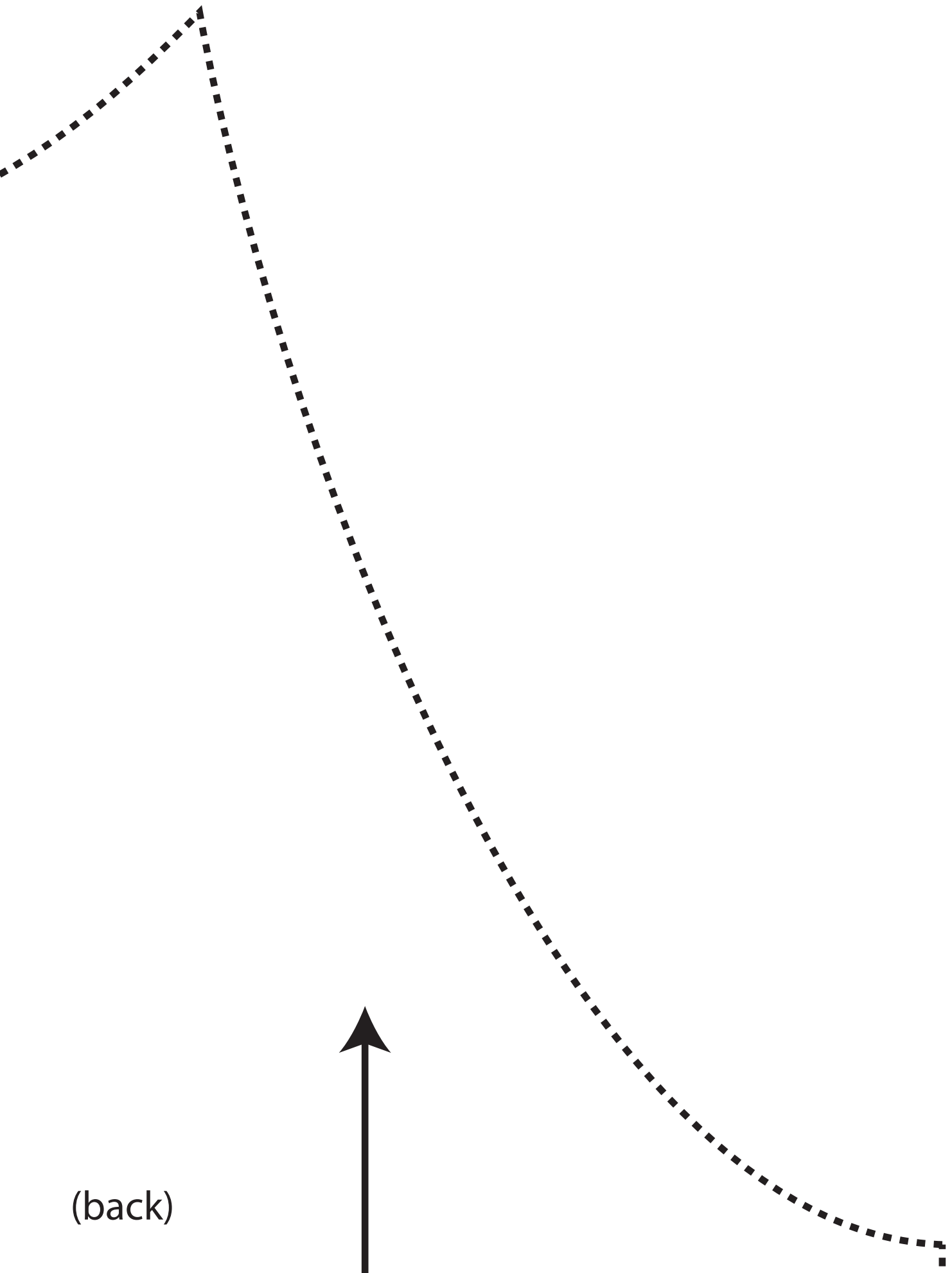




FOLD

Peasant Dress
Bodice Back
Cut 1 on fold

(back)



(back)



Peasant Dress
Skirt
Cut 4



Grain of fabric





(back)

(back)

Grain of fabric

