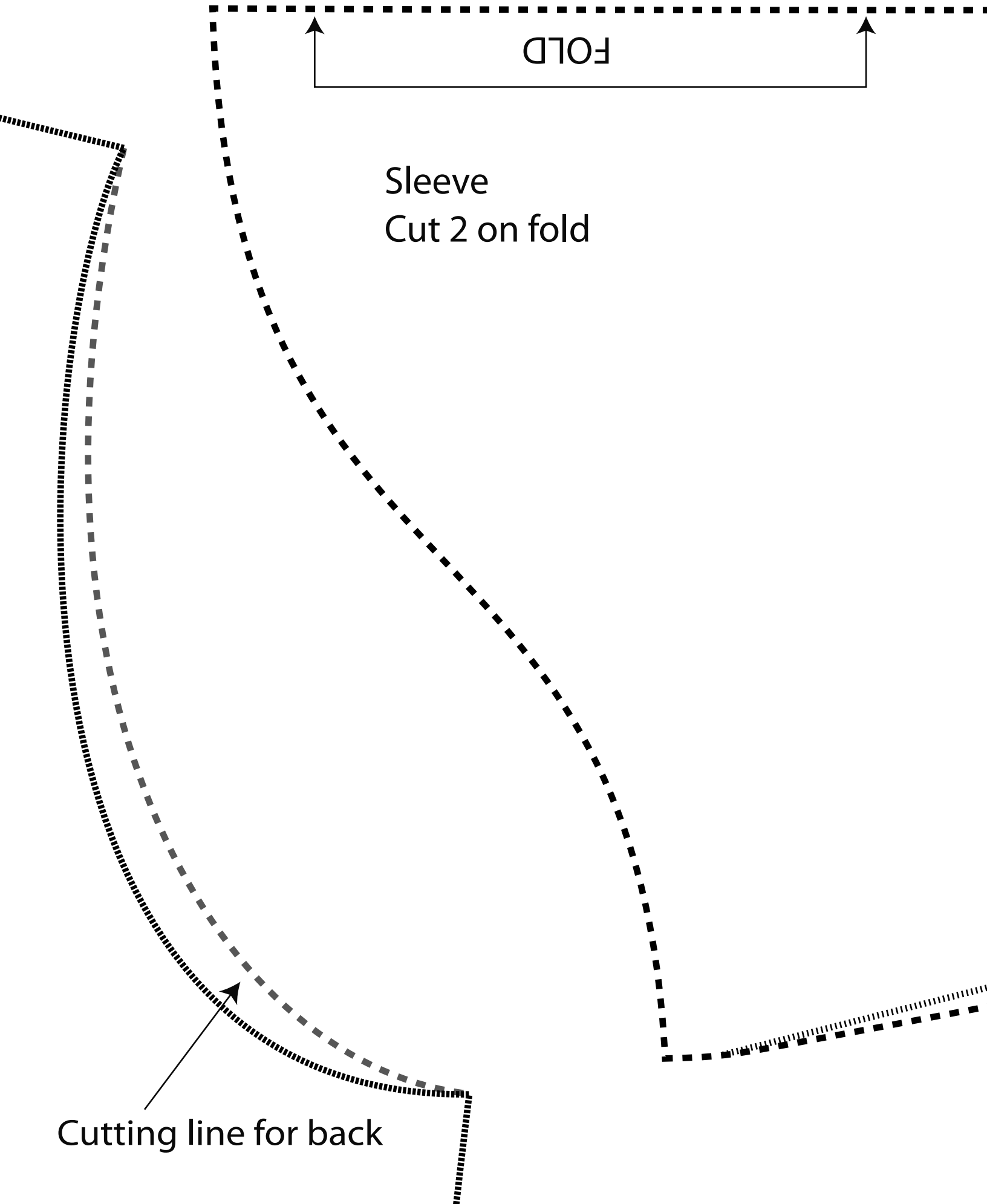
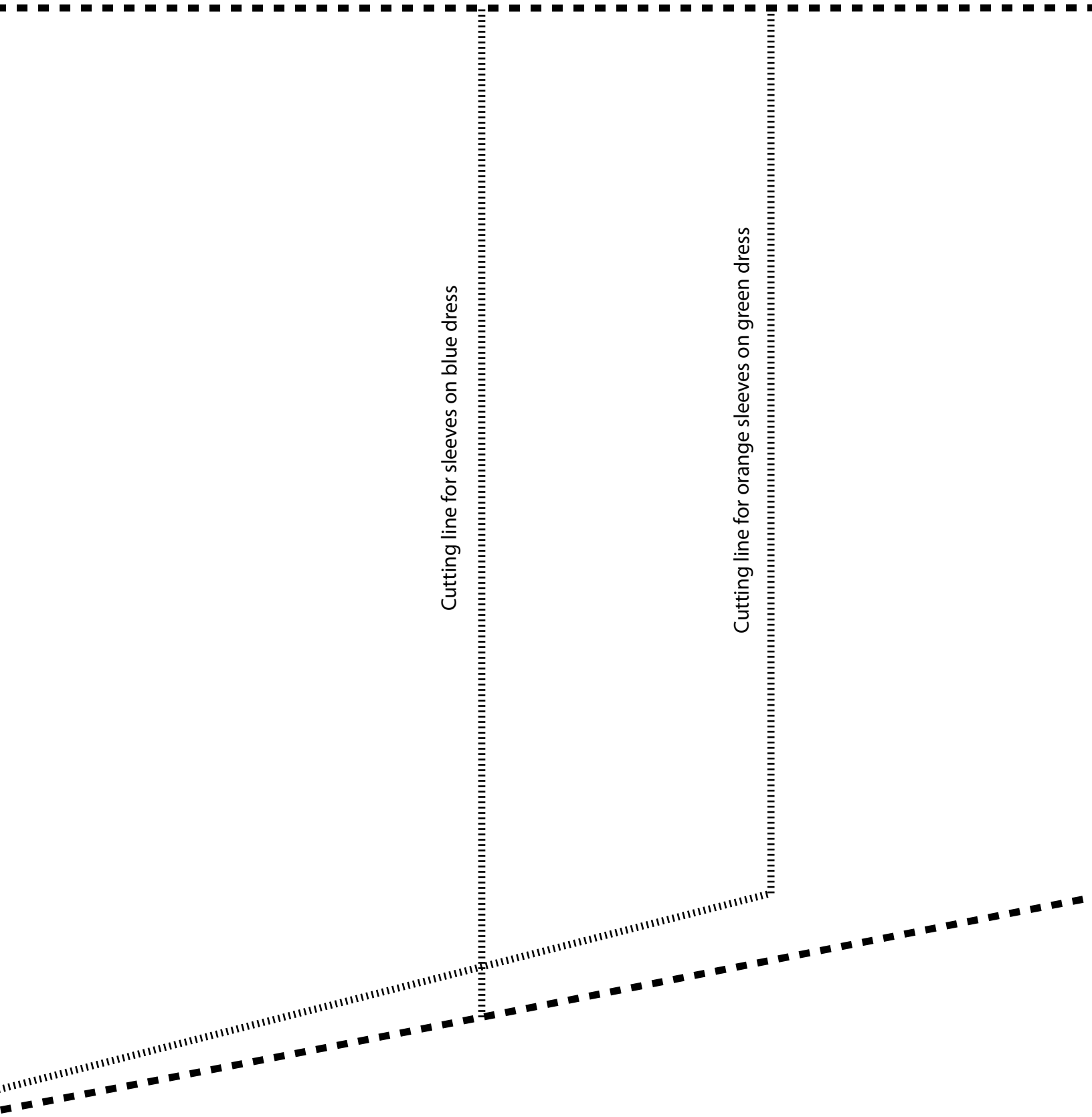


Make sure pdf file prints at  
100% without scaling

Back  
Cut 1 on fold, or  
cut two pieces  
and add seam  
allowance  
(for easier  
insertion of  
godets)





Cutting line for sleeves on blue dress

Cutting line for orange sleeves on green dress

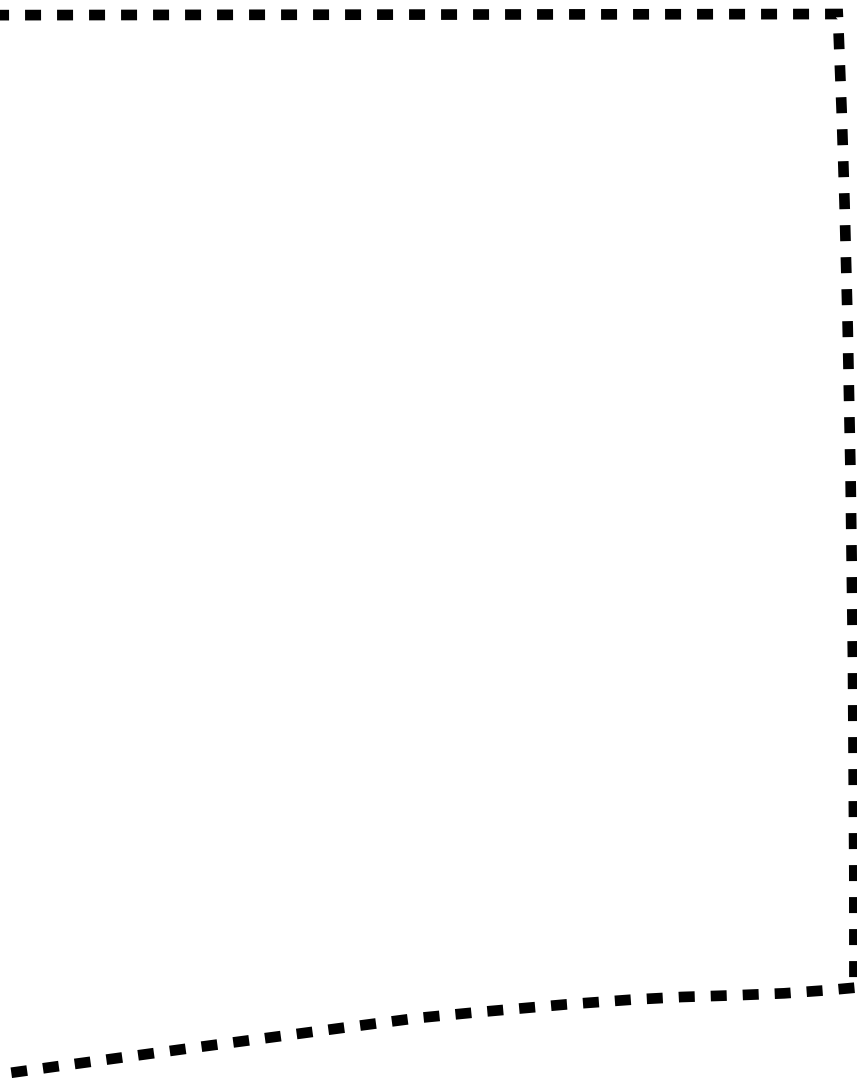
---

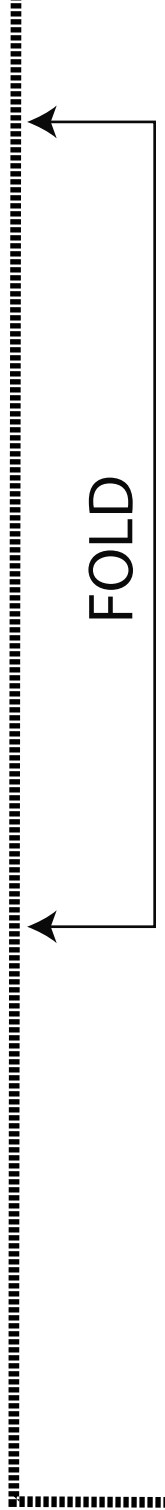
long narrow sleeve for  
medieval dress

Pattern from  
[www.janelwashere.com](http://www.janelwashere.com)  
[janelwashere@gmail.com](mailto:janelwashere@gmail.com)

Half-inch seams included

---





Front  
Cut 1 on  
fold

woven bodice for  
medieval dress 2011  
Size M (bust 38)

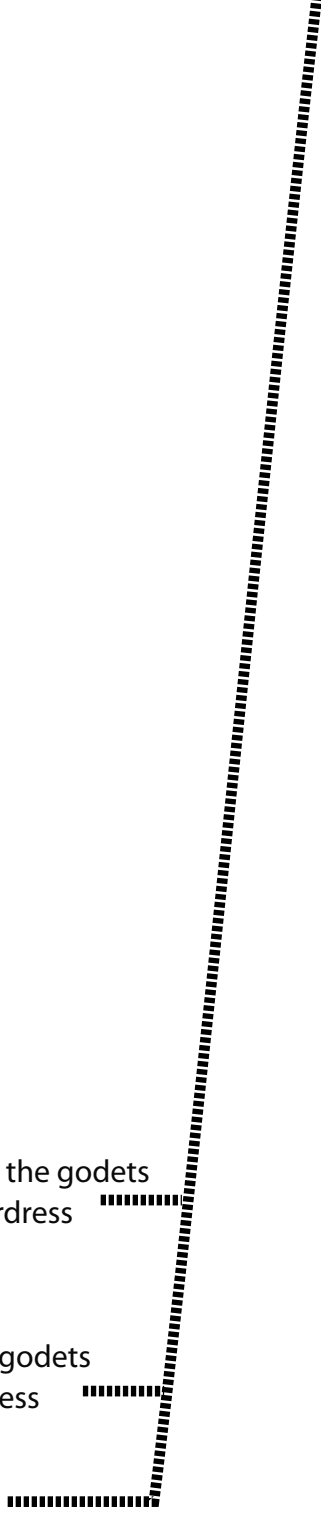
Pattern from  
[www.janelwashere.com](http://www.janelwashere.com)  
[janelwashere@gmail.com](mailto:janelwashere@gmail.com)

Half-inch seams included

DO NOT CUT lower edge, extend pieces clear  
to the floor and insert godets

where I started the godets  
on blue textured dress

where I started the godets  
on white underdress



to confirm printing scale, this line should be 4" long



woven bodice for medieval dress  
Size M (bust 38)

Pattern from [www.janelwashere.com](http://www.janelwashere.com)  
[janelwashere@gmail.com](mailto:janelwashere@gmail.com)

Half-inch seams included

Cut facings or line the bodice

Extend bodice pieces all the way down to the floor and add godets in the seams to form the skirt.

Instructions for making a wide skirt using godets:  
<http://forest.gen.nz/Medieval/articles/Tunics/TUNICS.HTML>